

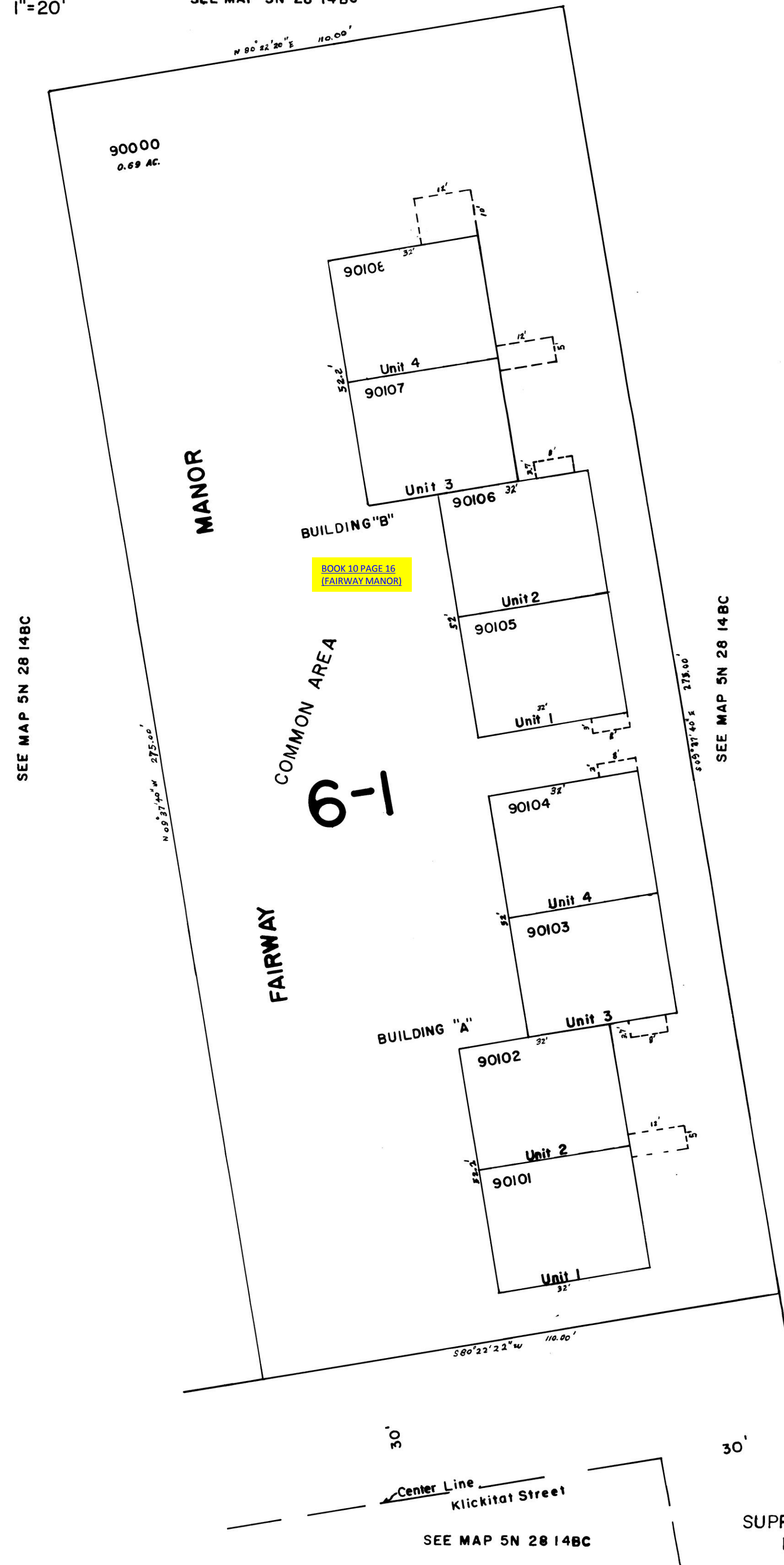
THIS MAP WAS PREPARED FOR
ASSESSMENT PURPOSES ONLY

NW1/4 NW1/4 Sec. 14 T. 5 N. R. 28 E. W. M.
UMATILLA COUNTY

1"=20'

SEE MAP 5N 28 14BC

5N28A
SUPPLEMENTAL
MAP NO. 1



5N28A
SUPPLEMENTAL
MAP NO. 1