

ALSO SEE SURVEYS 83-201-B, D-003-A, M-077-B, Q-0773-A, Q-1126-C, 04-155-B

This map was prepared for Assessment & Taxation purposes only and was NOT prepared nor is it suitable for legal, engineering or surveying purposes.

Cancelled Tax Lots

- 101
- 201
- 203
- 208
- 209
- 501
- 2400
- 2500
- 3700

NE 1/4 SE 1/4 SEC 18 T5N R28E WM

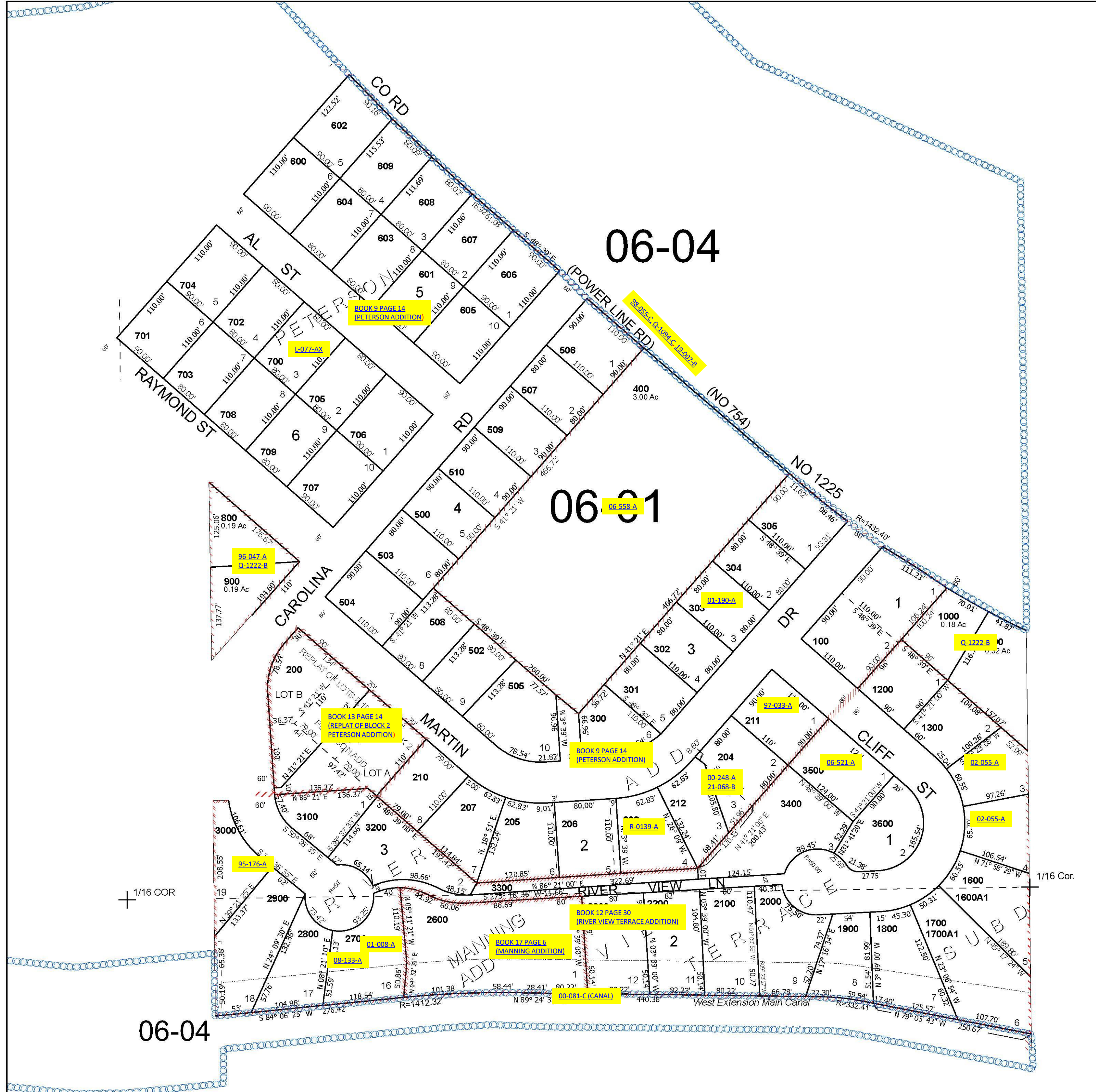
UMATILLA COUNTY

SCALE 1" = 100'

Umatilla

5N 28 18DA

See Map 5N 28 18



See Map 5N 28 18DB

See Map 5N 28 17

Revised 8/30/2024

See Map 5N 28 18DD

5N 28 18DA