

This map was prepared for Assessment & Taxation purposes only and was NOT prepared nor is it suitable for legal, engineering or surveying purposes.

Cancelled Tax Lots

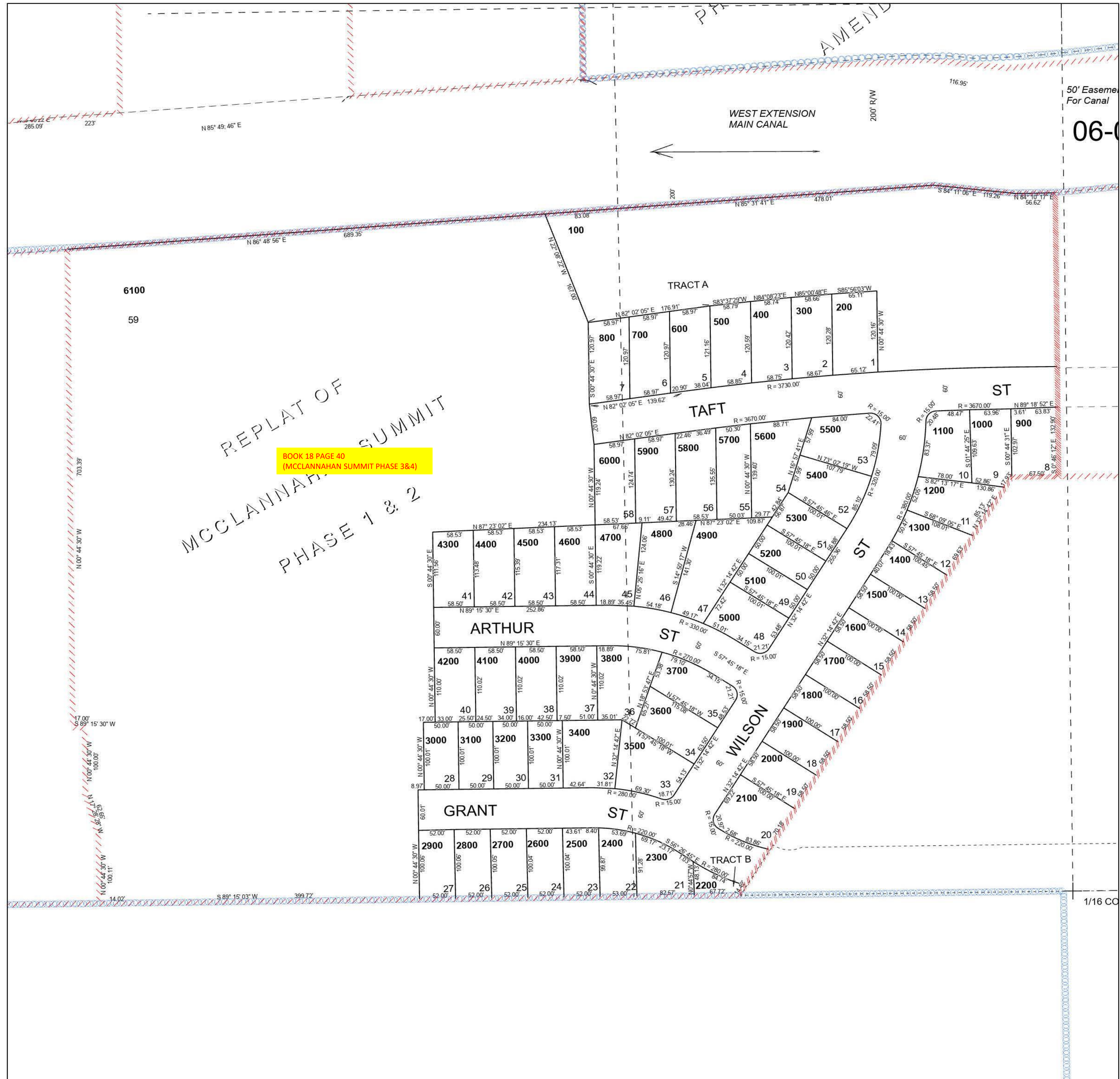
# SW 1/4 SE 1/4 SEC 18 T5N R28E WM UMATILLA COUNTY

SCALE 1" = 100'

Umatilla

5N 28 18DC

See Map 5N 28 18DB



See Map 5N 28 18

See Map 5N 28 18DB

Revised 7/14/2023

See Map 5N 28

5N 28 18DC