

ALSO SEE SURVEYS 03-218-A, Q-1126-C, 02-019-G, 03-140-B, 07-074-C, 09-040-A, 91-001-B, 94-171-G, 98-101-C, H-065-AX, I-016-C, Q-0772-B; CORNER RECORDS; G.L.O. SURVEYS

This map was prepared for Assessment & Taxation purposes only and was NOT prepared nor is it suitable for legal, engineering or surveying purposes.

Cancelled Tax Lots

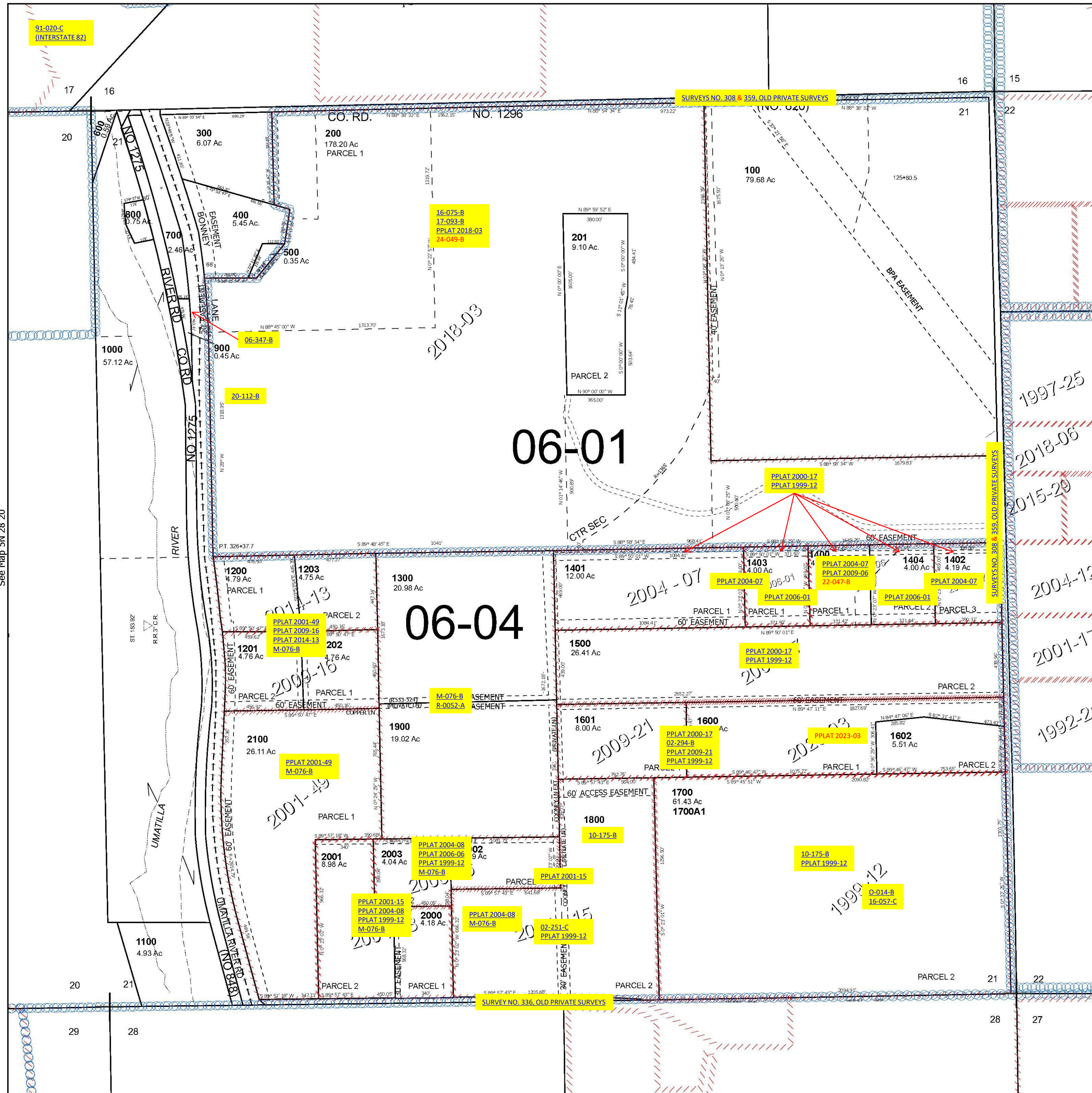
# SEC 21 T5N R28E WM UMATILLA COUNTY

SCALE 1" = 400'

See Map 5N 28 16

## 5N 28 21

Umatilla



See Map 5N 28 20

See Map 5N 28 22

Revised 11/5/2024

See Map 5N 28 28B

## 5N 28 21