

This map was prepared for Assessment & Taxation purposes only and was NOT prepared nor is it suitable for legal, engineering or surveying purposes.



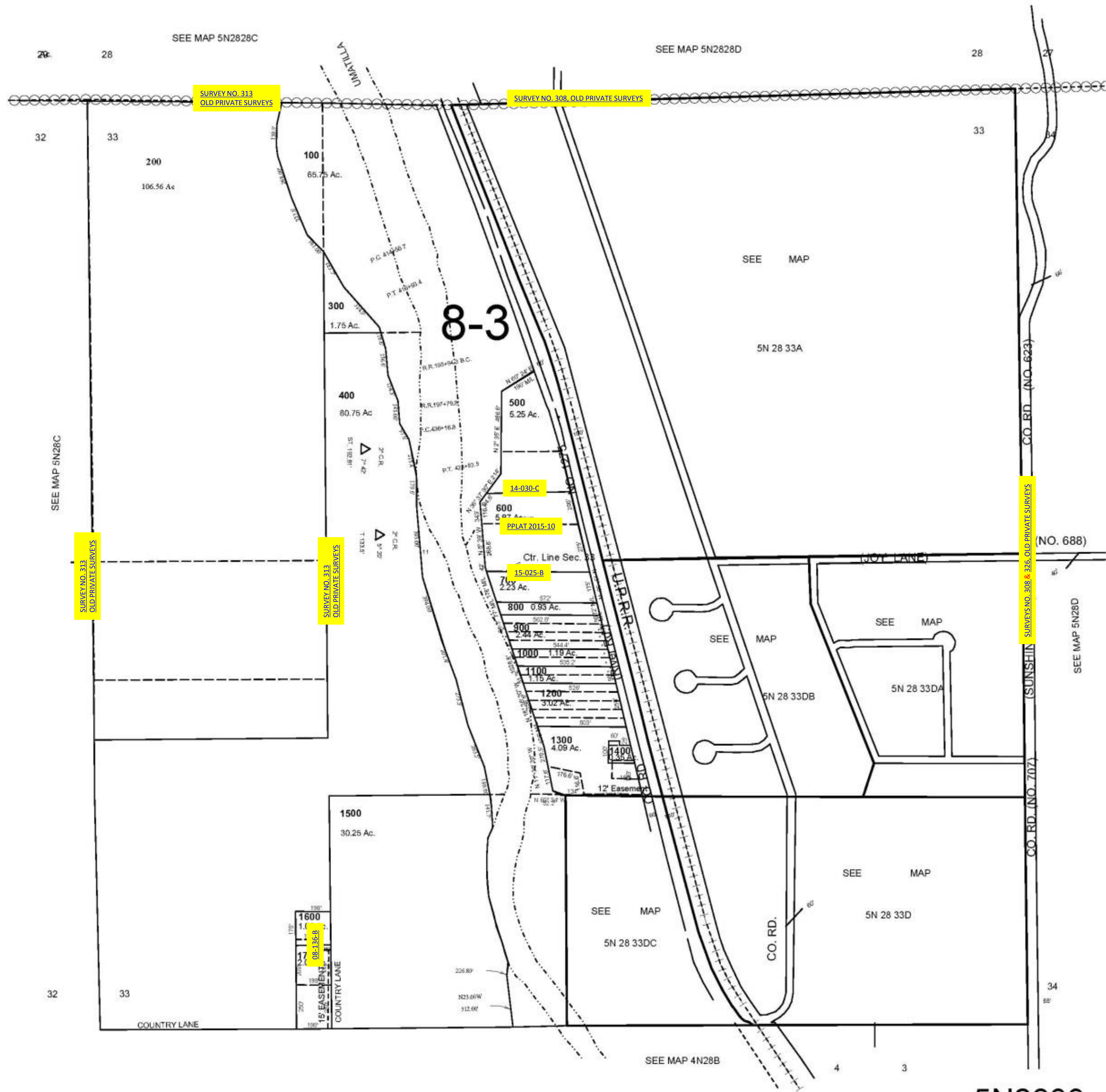
# SEC 33 T5 N R 28 E WM UMATILLA COUNTY, OR

3/24/03

## 5N2833

AERIAL PHOTO NO 1P 105

SCALE: 1" = 400'



## 5N2833