

This map was prepared for assessment purposes

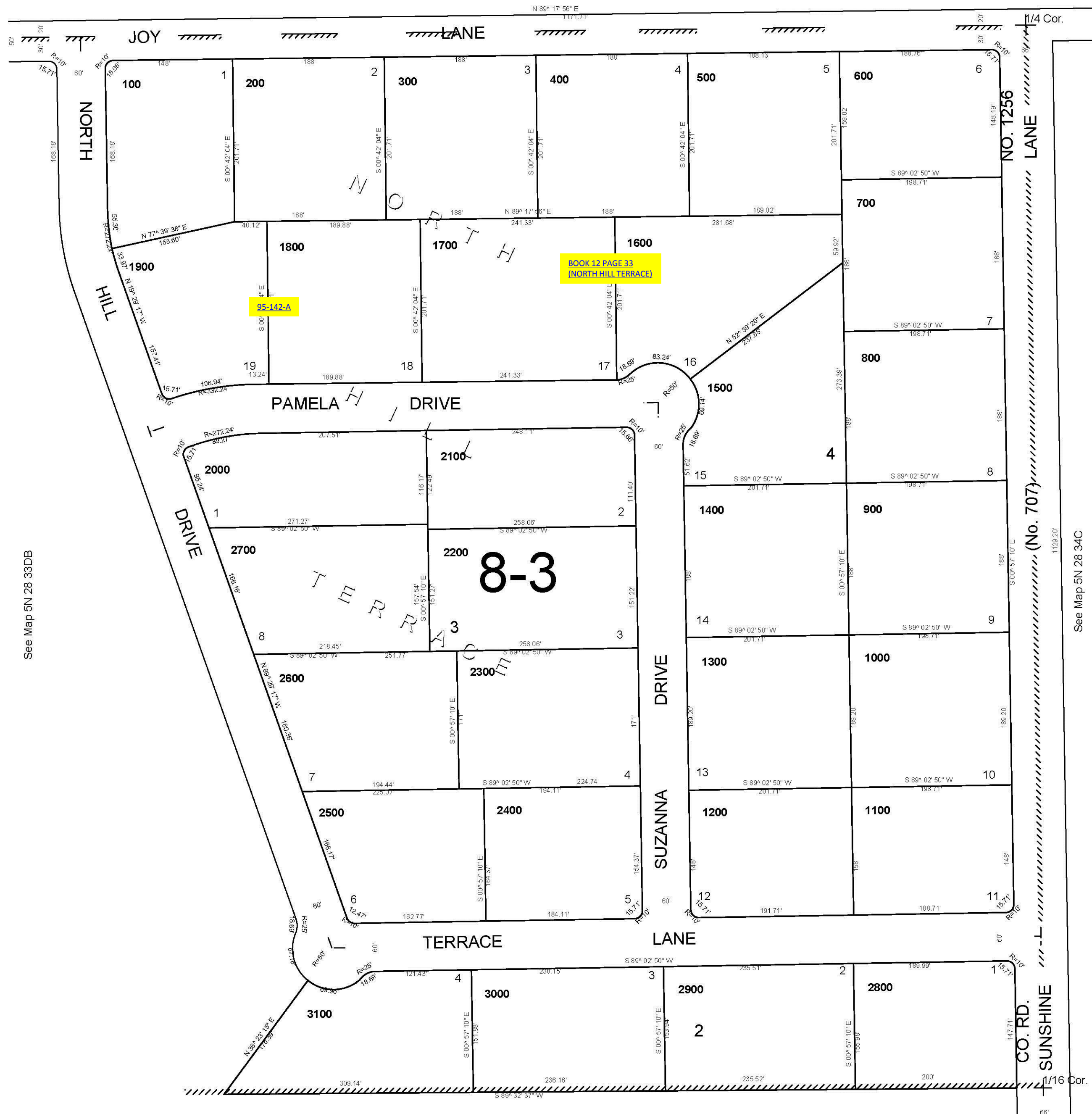
NE1/4 SE1/4 SEC 33 T5NR28E WM UMATILLA COUNTY

4/6/06

5N 28 33DA
AERIAL PHOTO NO. 1P-105

SCALE 1"=100'

See Map 5N 28 33A



See Map 5N 28 33DB

See Map 5N 28 34C

See Map 5N 28 33D

5N 28 33DA