

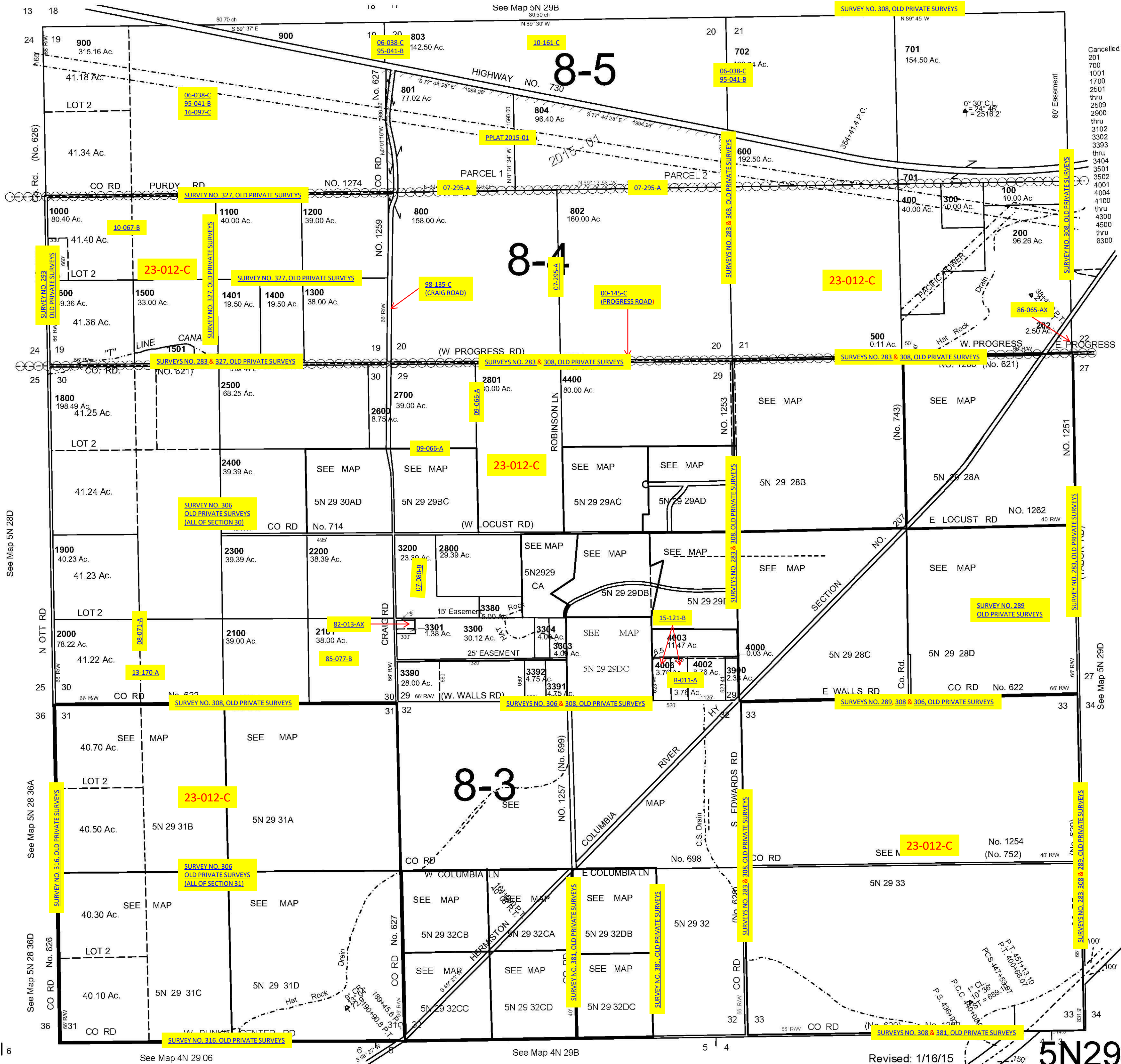
ALSO SEE SURVEYS 91-058-B, J-116-A, 01-010-A, 02-019-G, 06-265-C, 07-074-C, 82-008-B, 91-058-B, E-016-AX, S-156-C, H-030-AX, N-089-AX; CORNER RECORDS; G.L.O. SURVEYS

This map was prepared for Assessment & Taxation purposes only and was NOT prepared nor is it suitable for legal, engineering or surveying purposes.

# SW1/4 T5N R29E WM UMATILLA COUNTY

1" = 2000'

## 5N 29C



Revised: 1/16/15

## 5N29C