

ALSO SEE CORNER RECORDS; G.L.O. SURVEYS

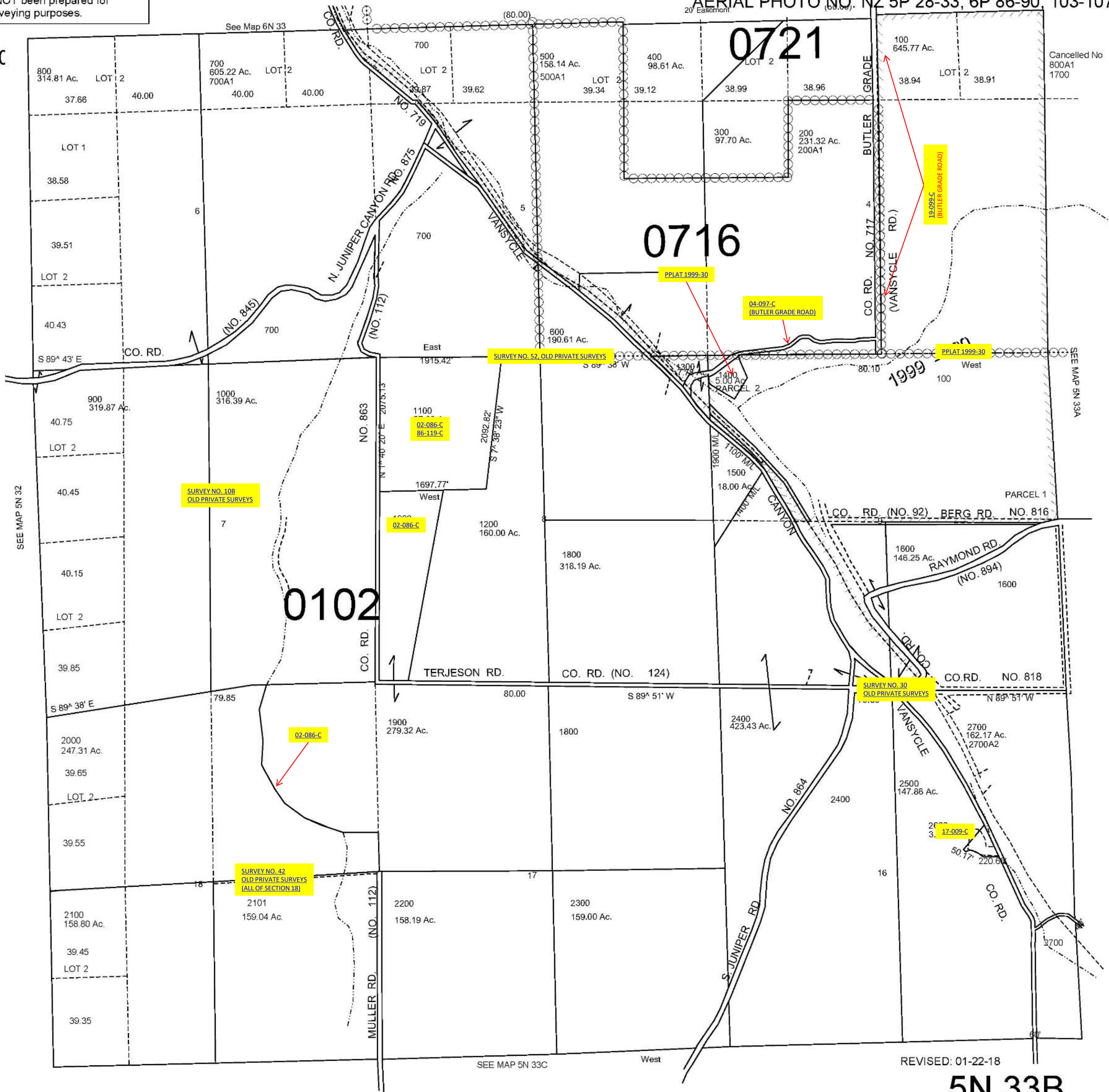
This map was prepared for Assessment and Taxation purposes only and has NOT been prepared for legal, engineering or surveying purposes.

NW1/4 T5N R33E WM UMATILLA COUNTY

5N 33B

AERIAL PHOTO NO. NZ 5P 28-33, 6P 86-90, 103-107

1"=100'



REVISED: 01-22-18

5N 33B