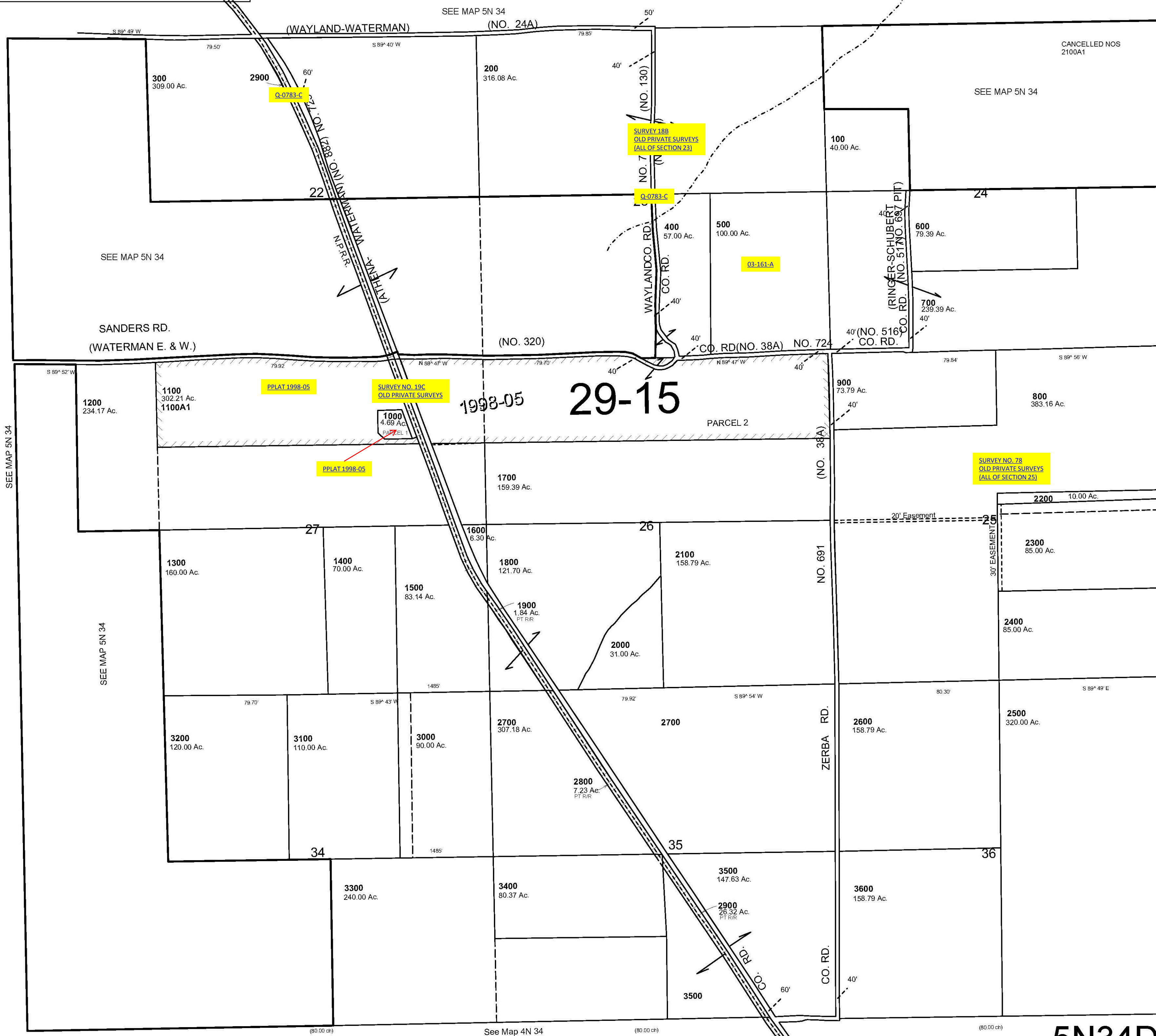


This map was prepared for Assessment & Taxation purposes only and was NOT prepared nor is it suitable for legal, engineering or surveying purposes.

# NW1/4 SW1/4 T5NR28E WM UMATILLA COUNTY

AERIAL PHOTO NO. NZ 6P 23-28 & 80-84 & 108-113  
**5N34D**



REVISED: 1/31/12

**5N34D**