

ALSO SEE SURVEY 05-014-G; SURVEY NO. 40, OLD PRIVATE SURVEYS

This map was prepared for Assessment & Taxation purposes only and was NOT prepared nor is it suitable for legal, engineering or surveying purposes.

SW1/4 NW1/4 SEC 12 T5N R35E WM UMATILLA COUNTY

5N3512BC

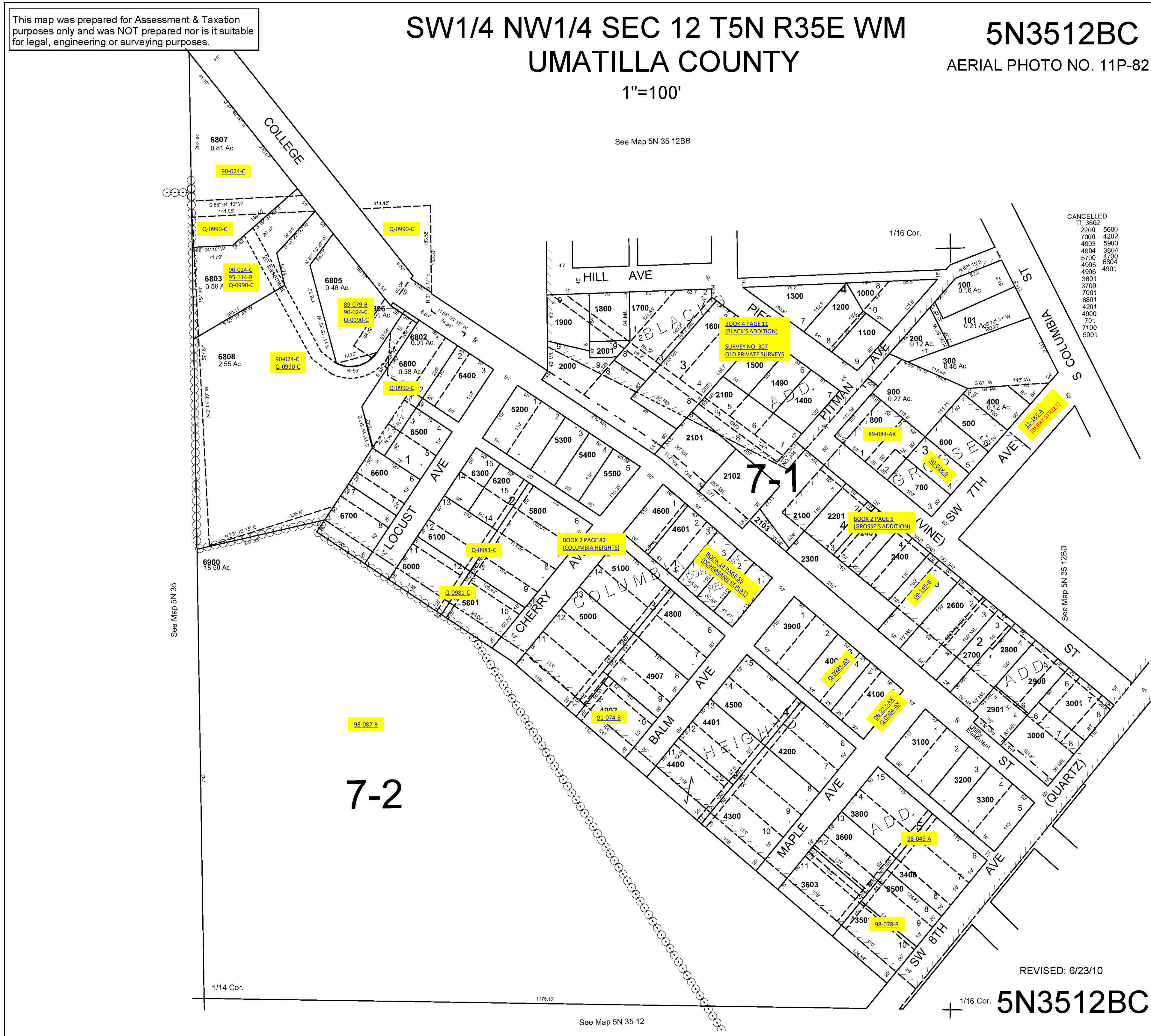
AERIAL PHOTO NO. 11P-82

1"=100'

See Map 5N 35 12BB

CANCELLED

TL 3602	2200	5600
	7000	4202
	4903	5900
	4904	3604
	5700	4700
	4905	4700
	4906	6804
	3601	4901
	3700	
	7001	
	6801	
	4201	
	4900	
	701	
	7100	
	5001	



See Map 5N 35 12BD

See Map 5N 35

1/14 Cor.

See Map 5N 35 12

REVISED: 6/23/10

1/16 Cor.

5N3512BC