

ALSO SEE SURVEY 05-014-G

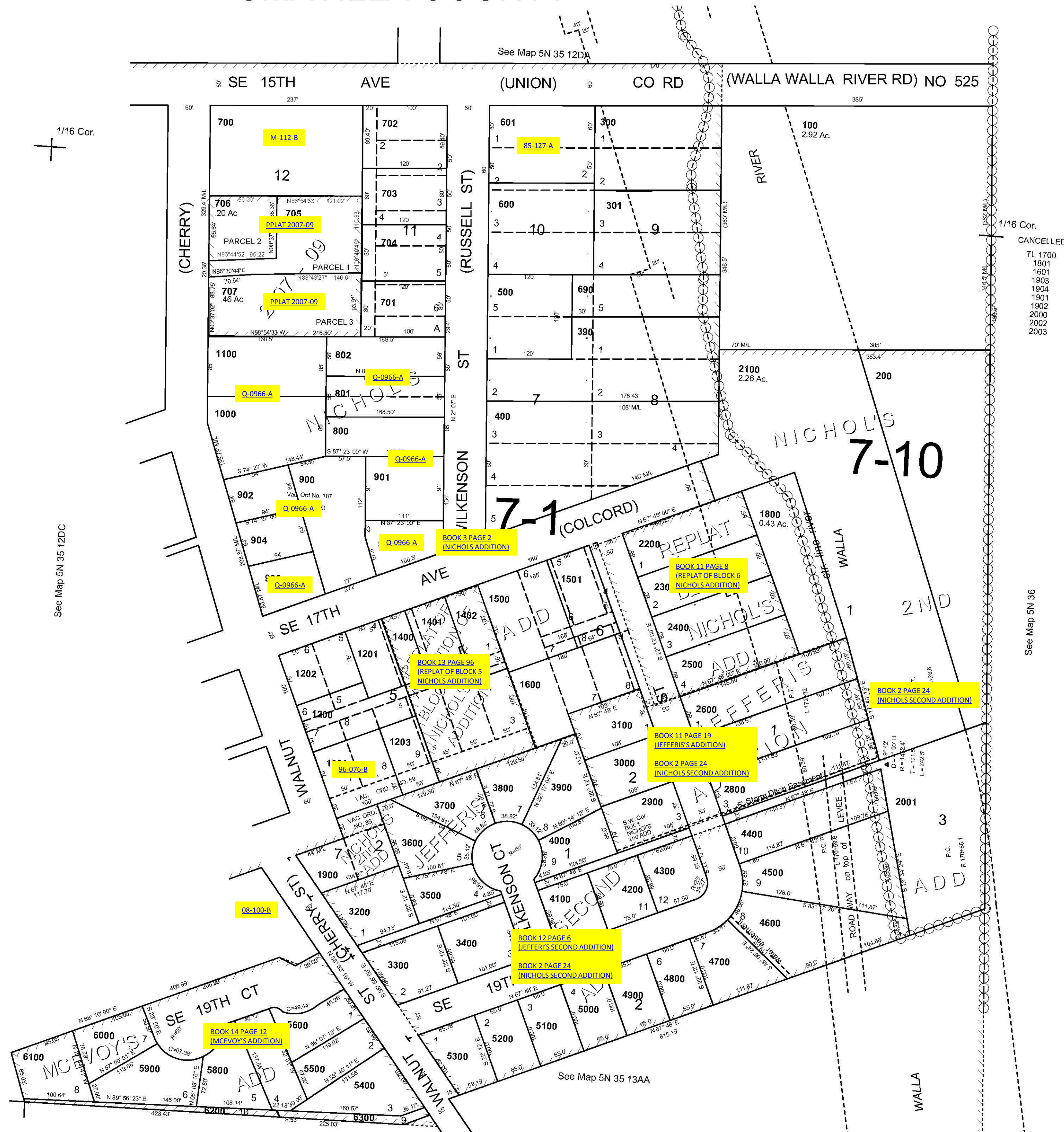
This map was prepared for Assessment & Taxation purposes only and was NOT prepared nor is it suitable for legal, engineering or surveying purposes.

SE1/4 SE1/4 SEC 12 T5N R35E WM UMATILLA COUNTY

1"=100'

5N 35 12DD

AERIAL PHOTO NO 11P-82



- CANCELLED
- TL 1700
 - 1801
 - 1801
 - 1903
 - 1904
 - 1801
 - 1902
 - 2000
 - 2002
 - 2003

Revised: 12/21/12 **5N 35 12DD**