

ALSO SEE SURVEYS 99-012-C, 05-112-C, 12-155-C, 98-147-G; Q-0802-B, R-0118-B, S-156-C; CORNER RECORDS; G.L.O. SURVEYS

This map was prepared for Assessment & Taxation purposes only and was NOT prepared nor is it suitable for legal, engineering or surveying purposes.

Cancelled Tax Lots		
100	110	401
101	111	501
102	112	
103	113	
104	114	
105	200	
106	201	
107	202	
108	302	
109	400	

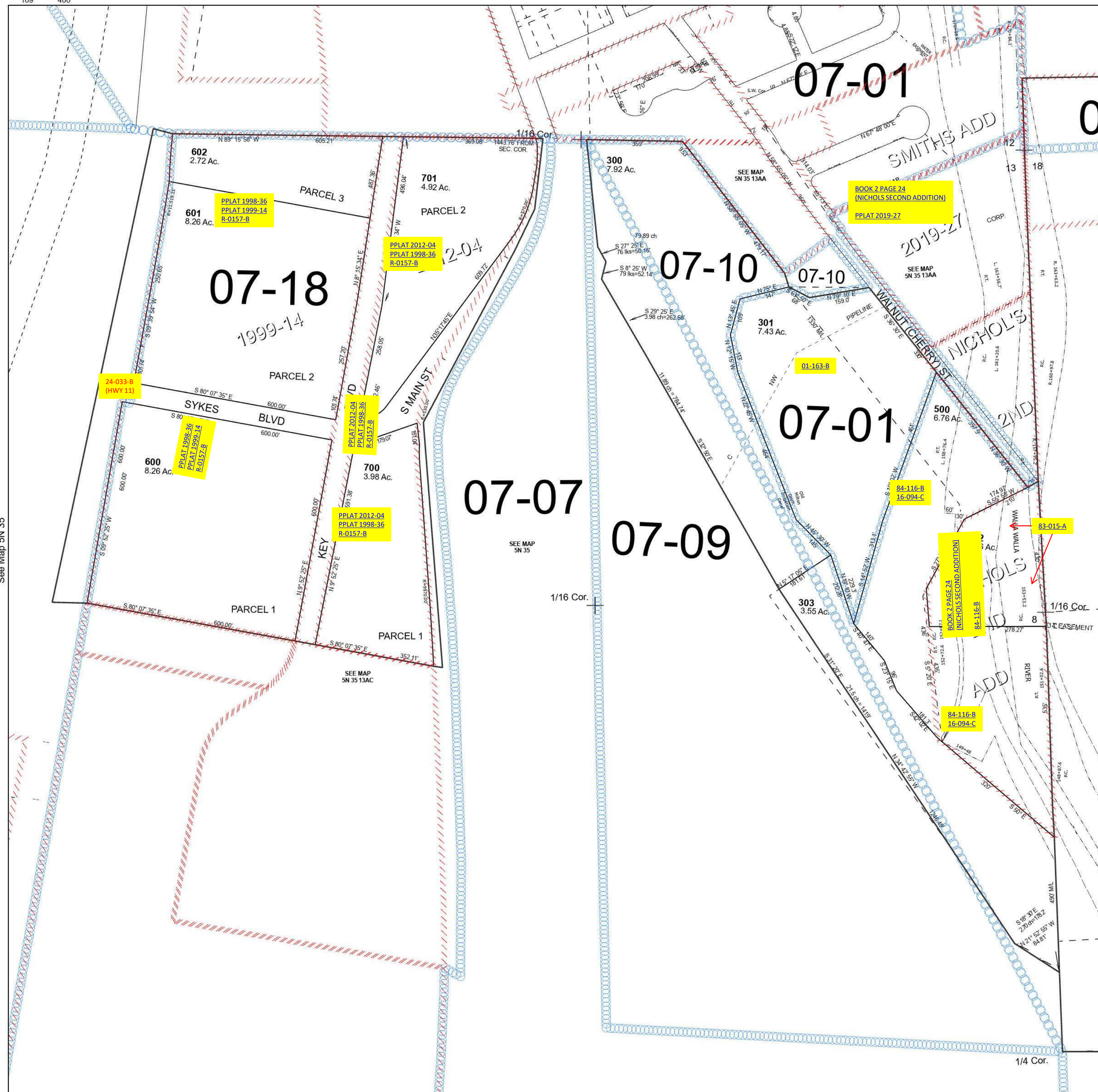
NE 1/4 SEC 13 T5N R35E WM UMATILLA COUNTY

5N 35 13A

Milton-Freewater

SCALE 1" = 200'

See Map 5N 35 12DD



Revised 6/28/2023

See Map 5N 35

5N 35 13A