

ALSO SEE SURVEYS 02-133-B, 04-223-A, O-002-C, Q-1263-B

This map was prepared for Assessment & Taxation purposes only and was NOT prepared nor is it suitable for legal, engineering or surveying purposes.

Cancelled Tax Lots

- 402
- 403
- 405
- 500
- 700
- 2300
- 2301

SE 1/4 NW 1/4 SEC 14 T5S R31E WM

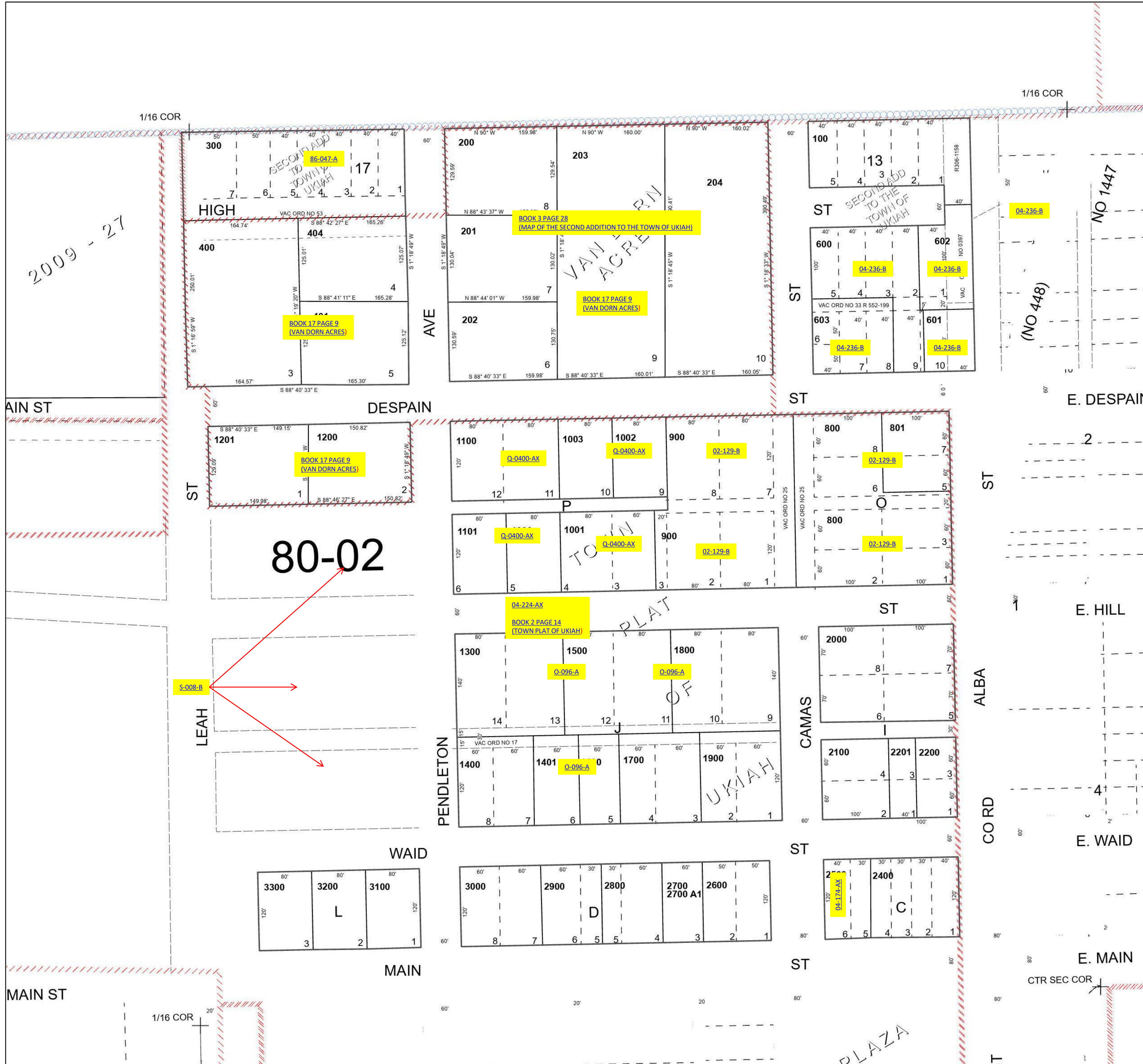
UMATILLA COUNTY

SCALE 1" = 100'

Ukiah

5S 31 14BD

See Map 5S 31



See Map 5S 31 14BC

See Map 5S 31 14AC

Revised 6/6/2023

See Map 5S 31 14CA

5S 31 14BD