

ALSO SEE SURVEY 83-179-BB; CORNER RECORDS; G.L.O. SURVEYS

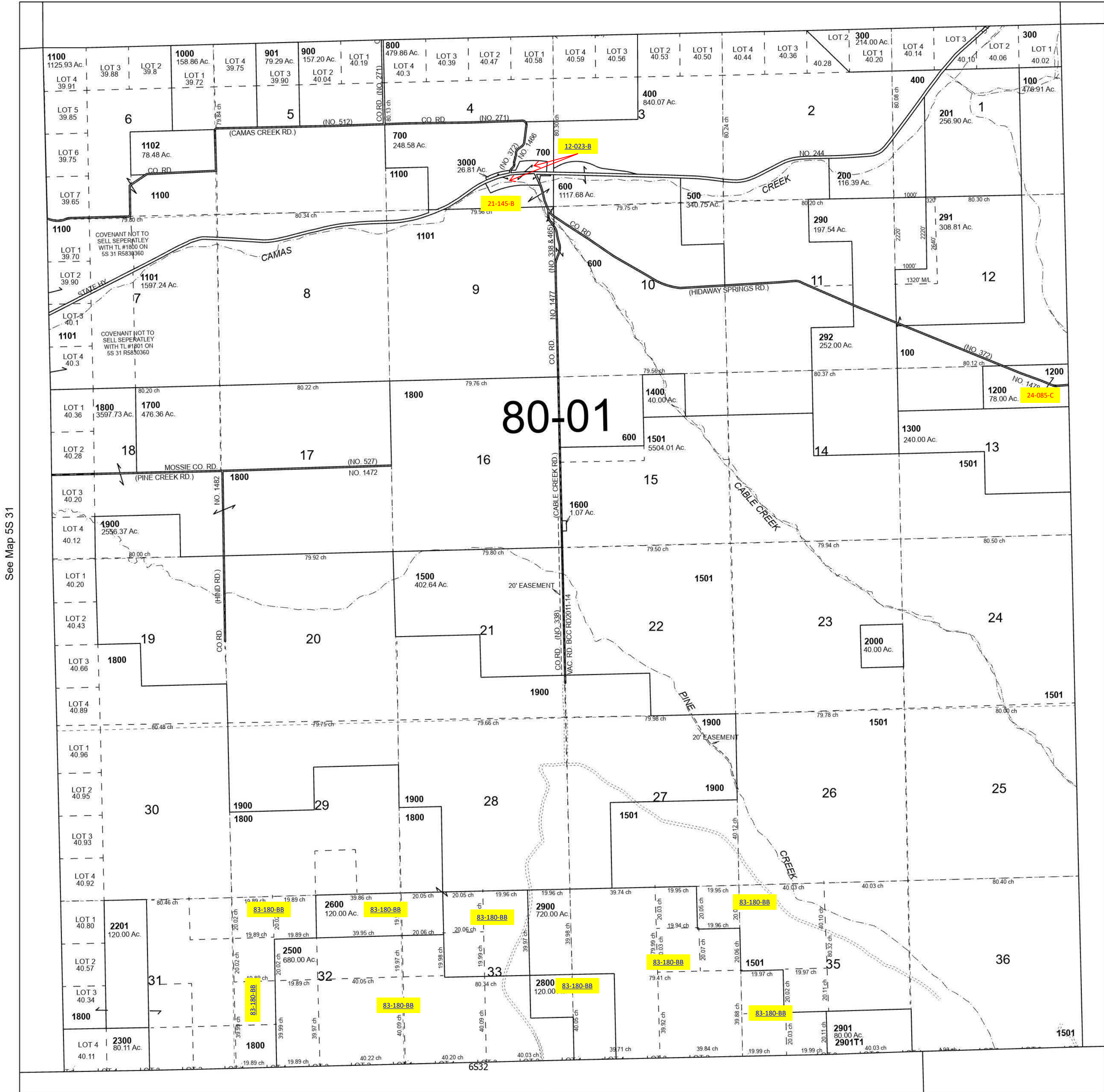
This map was prepared for Assessment & Taxation purposes only and was NOT prepared nor is it suitable for legal, engineering or surveying purposes.

T5S R32E WM
UMATILLA COUNTY
SCALE 1" = 2,000'

5S 32

- Cancelled Tax Lots
- 2100
 - 2200
 - 2301
 - 2302
 - 2400
 - 2501
 - 2601
 - 2700

See Map 4S 32



See Map 5S 31

See Map 5S 33

Revised 8/17/2023

See Map 6S 32

5S 32