

ALSO SEE SURVEYS 03-021-C, 03-023-C, 12-031-C; CORNER RECORDS; G.L.O. SURVEYS

This map was prepared for assessment purposes

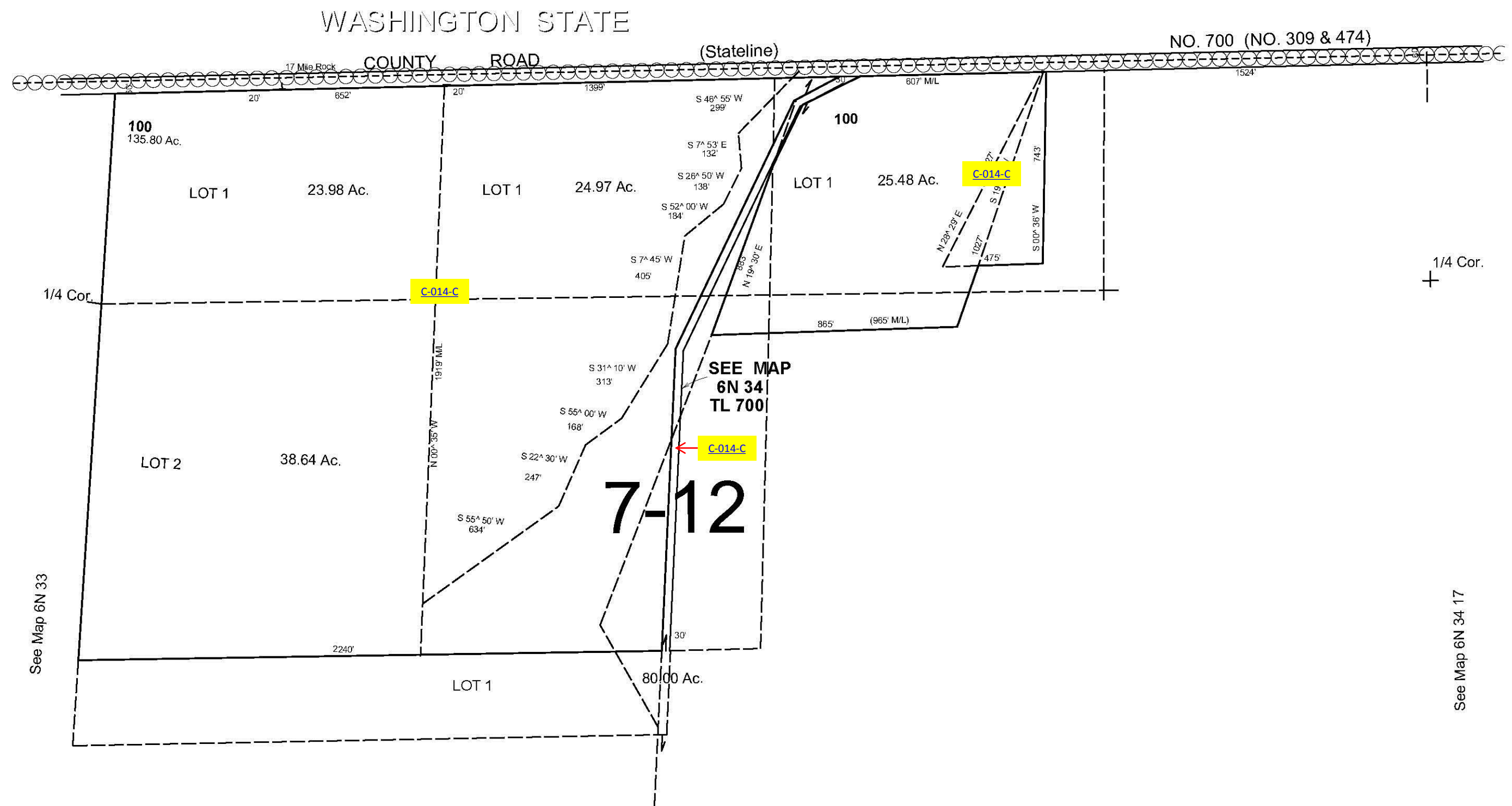
SEC 18 T6N R34E WM UMATILLA COUNTY SCALE 1"=400'

10/04/06

6N 34 18

AERIAL PHOTO NO. 6P-27

CANCELLED
TL 200



13 18
24 19

1/4 Cor.
See Map 6N 34

18 17
19 20

6N 34 18