

ALSO SEE SURVEYS 03-023-C, 12-031-C, 12-033-C; SURVEY NO. 309, OLD PRIVATE SURVEYS; CORNER RECORDS; G.L.O. SURVEYS

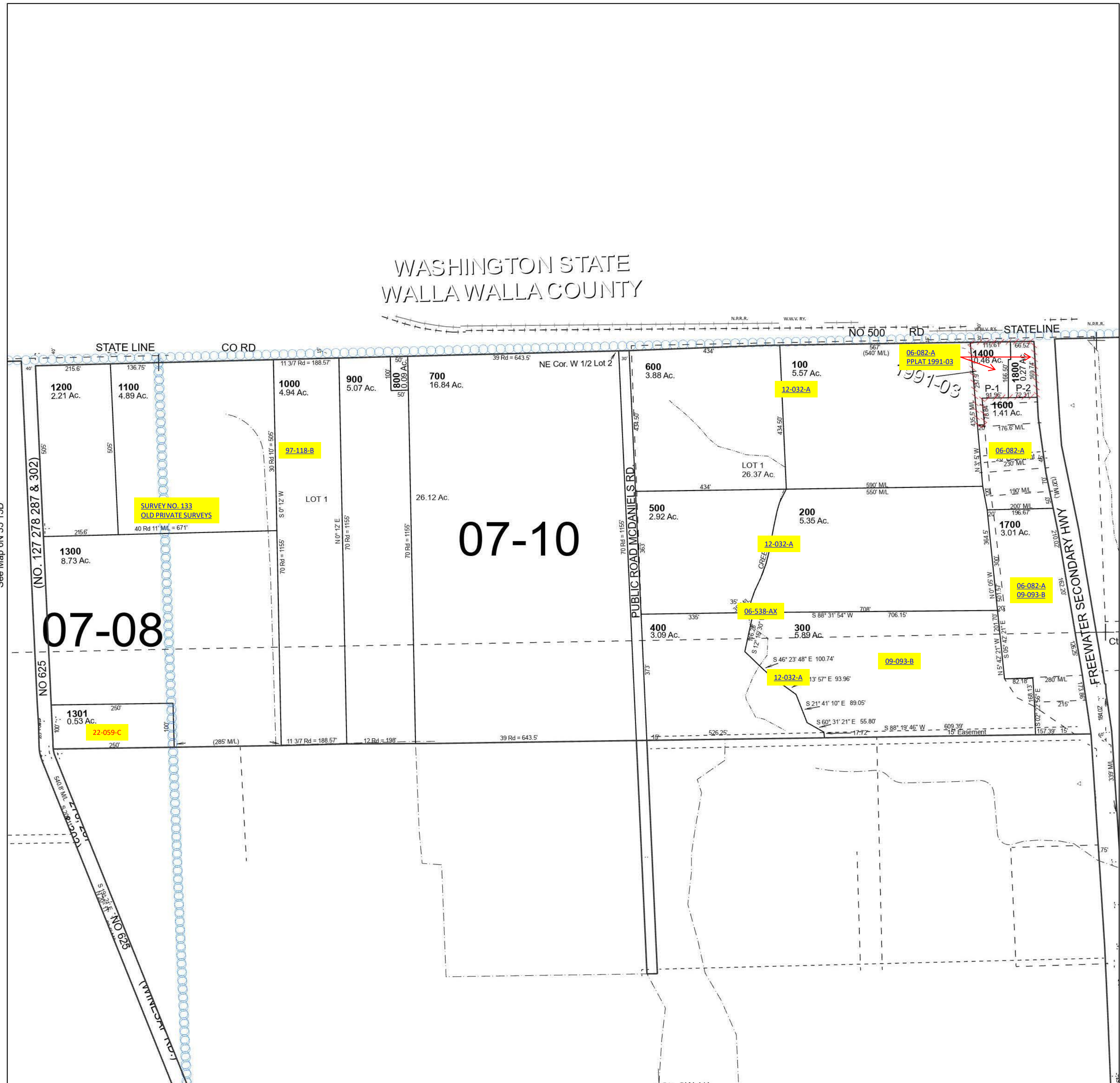
This map was prepared for Assessment & Taxation purposes only and was NOT prepared nor is it suitable for legal, engineering or surveying purposes.

Cancelled Tax Lots  
1500

# NW 1/4 SEC 14 T6N R35E WM UMATILLA COUNTY

SCALE 1" = 200'

6N 35 14B



See Map 6N 35 15D

See Map 6N 35 14D

Revised 9/28/2023

See Map 6N 35 14C

6N 35 14B