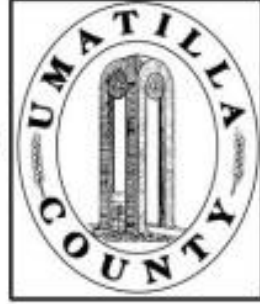


This map was prepared for Assessment purposes only.



NE1/4 SEC 22 T 6N R 35E WM
UMATILLA COUNTY, OR
SCALE: 1" = 200'

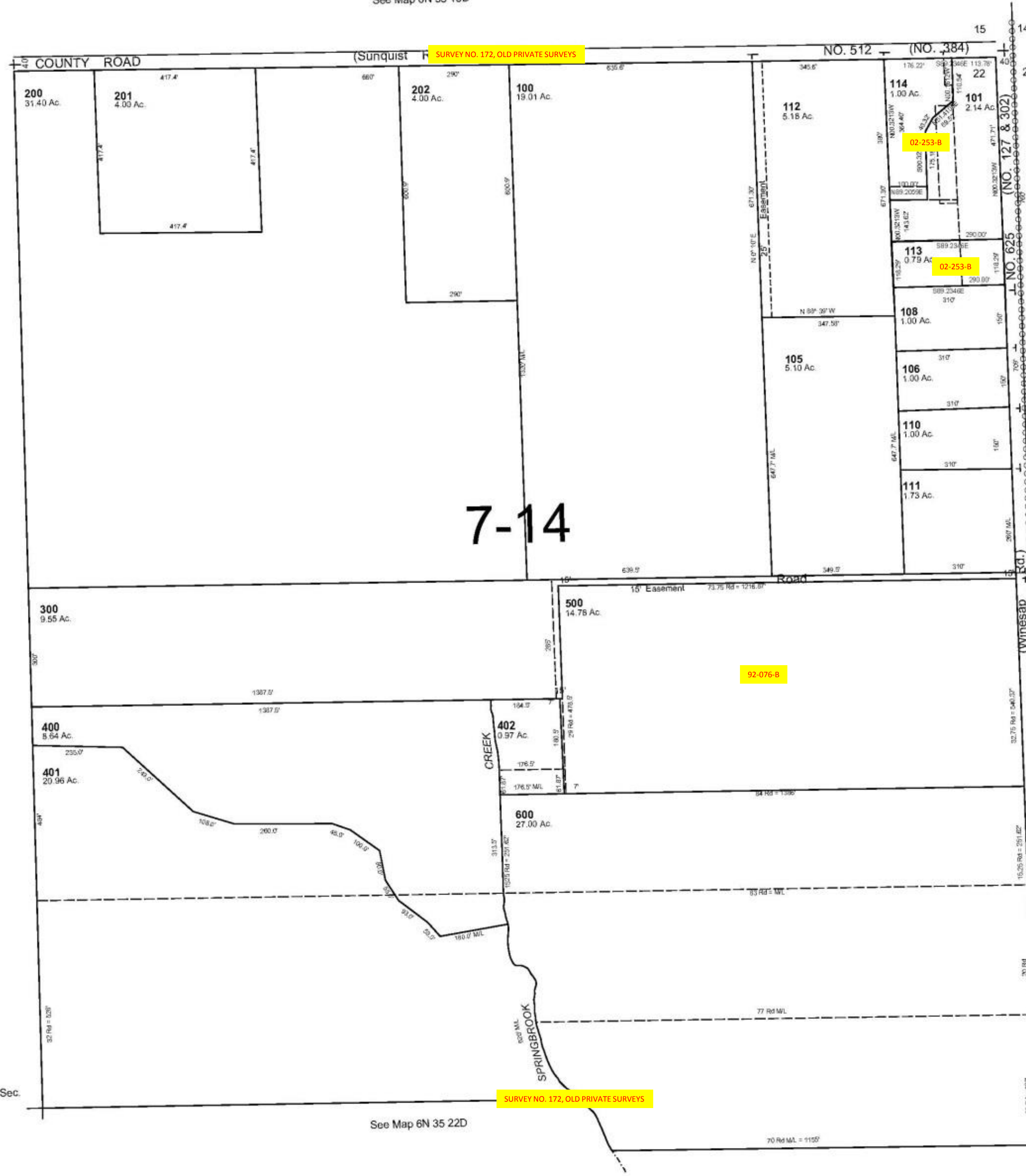
4/24/06

6N3522A

AERIAL PHOTO NO. NZ-6P-19

See Map 6N 35 15D

1/4 Cor.



6N3522A