

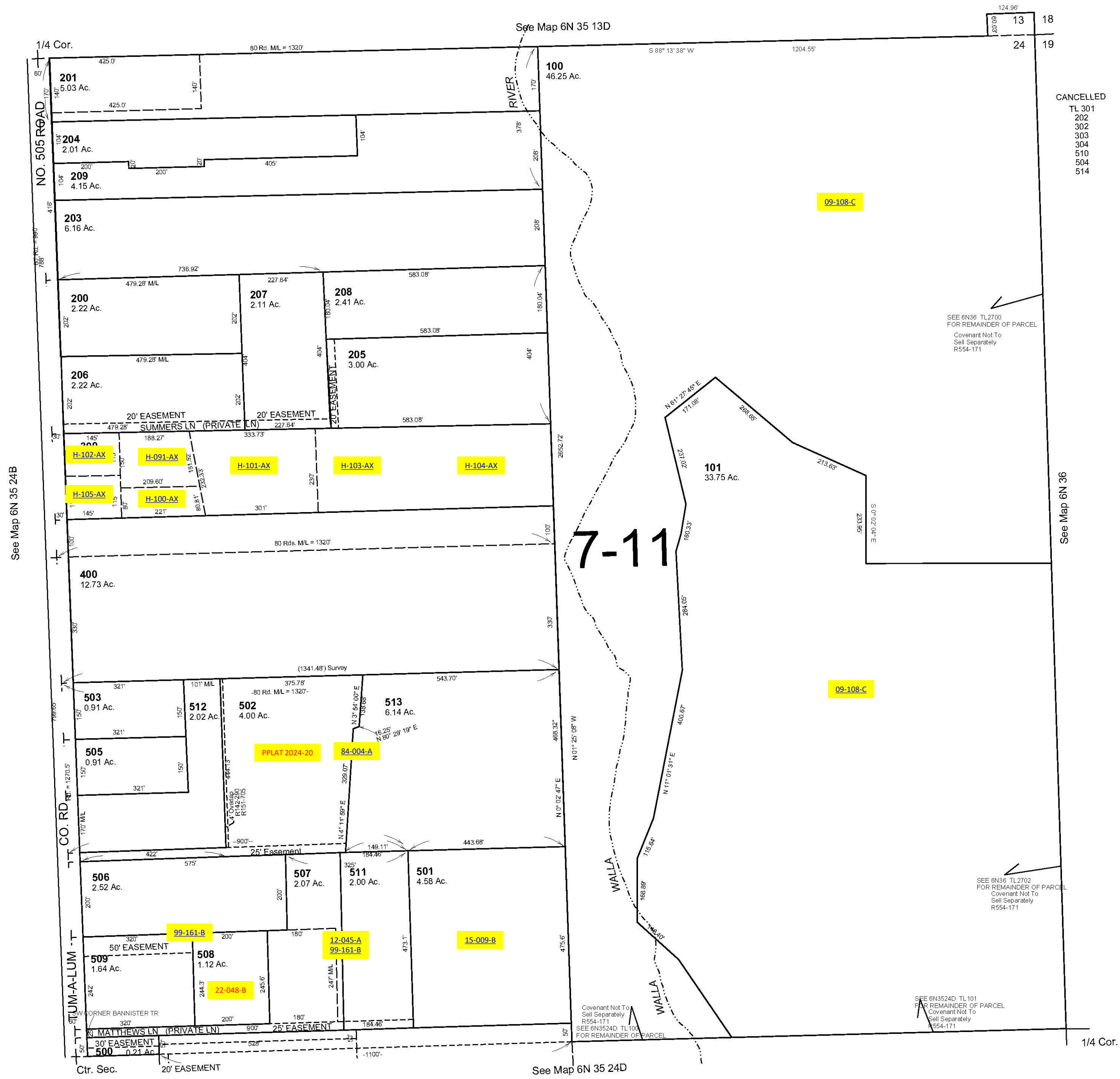
ALSO SEE SURVEYS 03-023-C, 09-010-C, 12-033-C; CORNER RECORDS; G.L.O. SURVEYS

This map was prepared for Assessment & Taxation purposes only and was NOT prepared nor is it suitable for legal, engineering or surveying purposes.

# NE1/4 SEC 24 T6N R35E WM UMATILLA COUNTY SCALE 1"=200'

## 6N 35 24A

AERIAL PHOTO NO. 6P-17



CANCELLED  
TL 301  
202  
302  
303  
304  
510  
504  
514

SEE BN36 TL2700  
FOR REMAINDER OF PARCEL  
Covenant Not To  
Sell Separately  
R554-171

SEE BN36 TL2702  
FOR REMAINDER OF PARCEL  
Covenant Not To  
Sell Separately  
R554-171

SEE BN3524D TL101  
FOR REMAINDER OF PARCEL  
Covenant Not To  
Sell Separately  
R554-171

# 7-11

Revised: 4/08/11

## 6N 35 24A