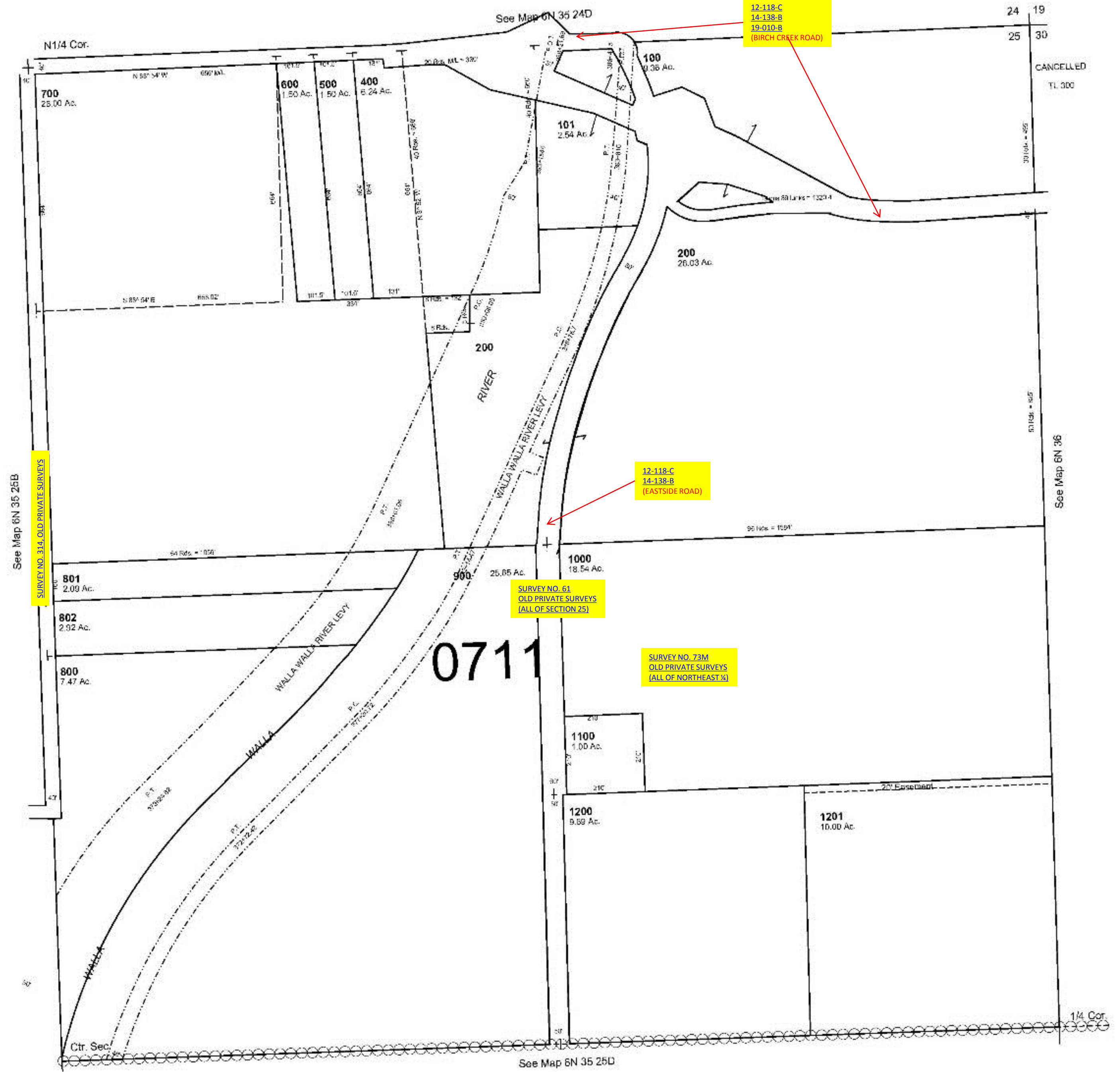


ALSO SEE SURVEYS 03-023-C, 09-010-C, 12-033-C, 98-147-G; CORNER RECORDS; G.L.O. SURVEYS

This map was prepared for Assessment & Taxation purposes only and was NOT prepared nor is it suitable for legal, engineering or surveying purposes.

NE1/4 SEC 25 T6N R35E WM
UMATILLA COUNTY
SCALE 1"=200'

6N 35 25A
AERIAL PHOTO NO. 6P-64



REVISED: 09-08-17

6N 35 25A