

ALSO SEE SURVEYS 03-291-A, 15-063-C; CORNER RECORDS; G.L.O. SURVEYS

This map was prepared for assessment purposes

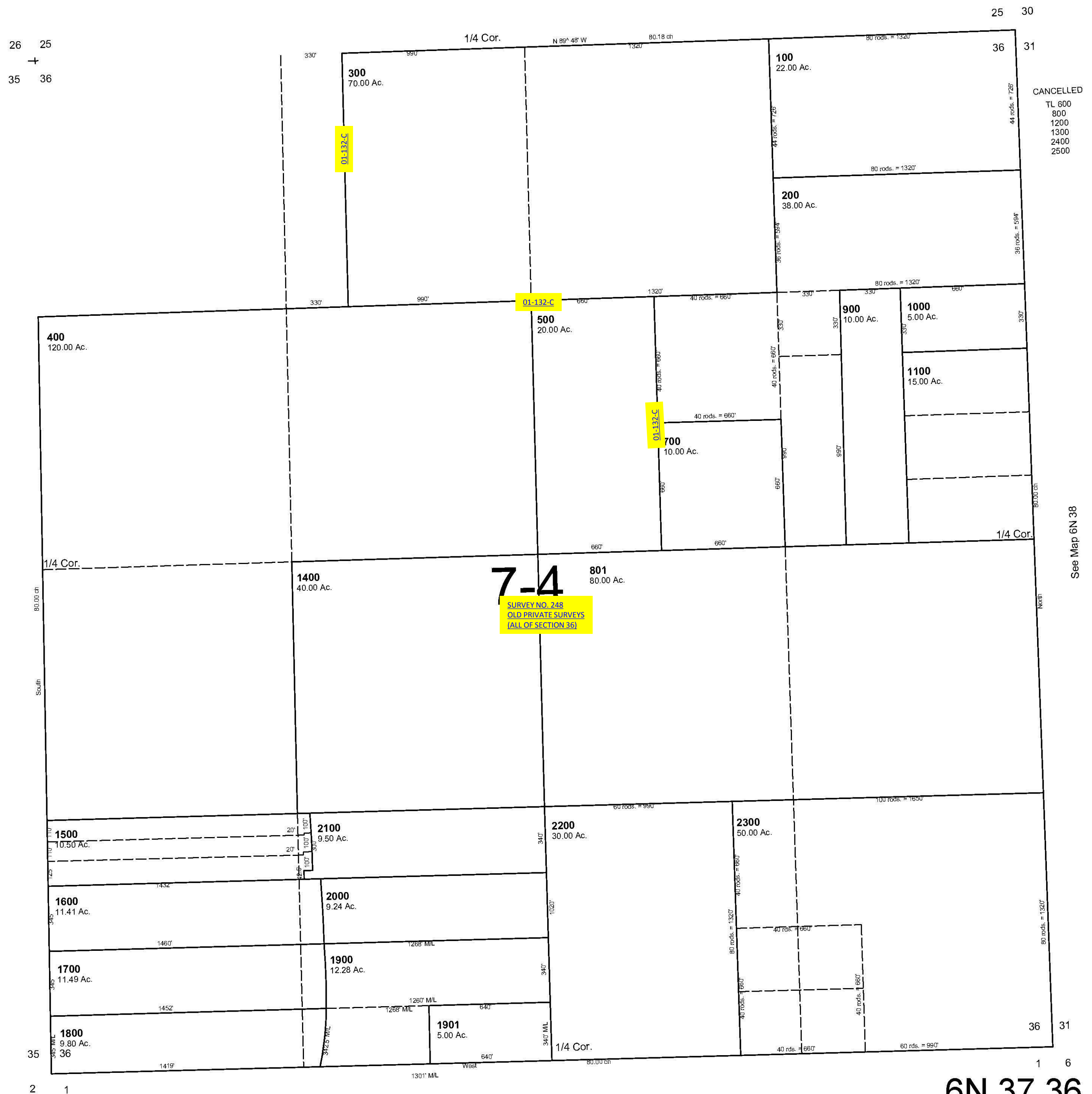
# SEC 36 T6N R37E WM UMATILLA COUNTY

5/8/06

## 6N 37 36

AERIAL PHOTO NO. NZ 6P-73

SCALE 1"=400'



See Map 6N 38

## 6N 37 36