

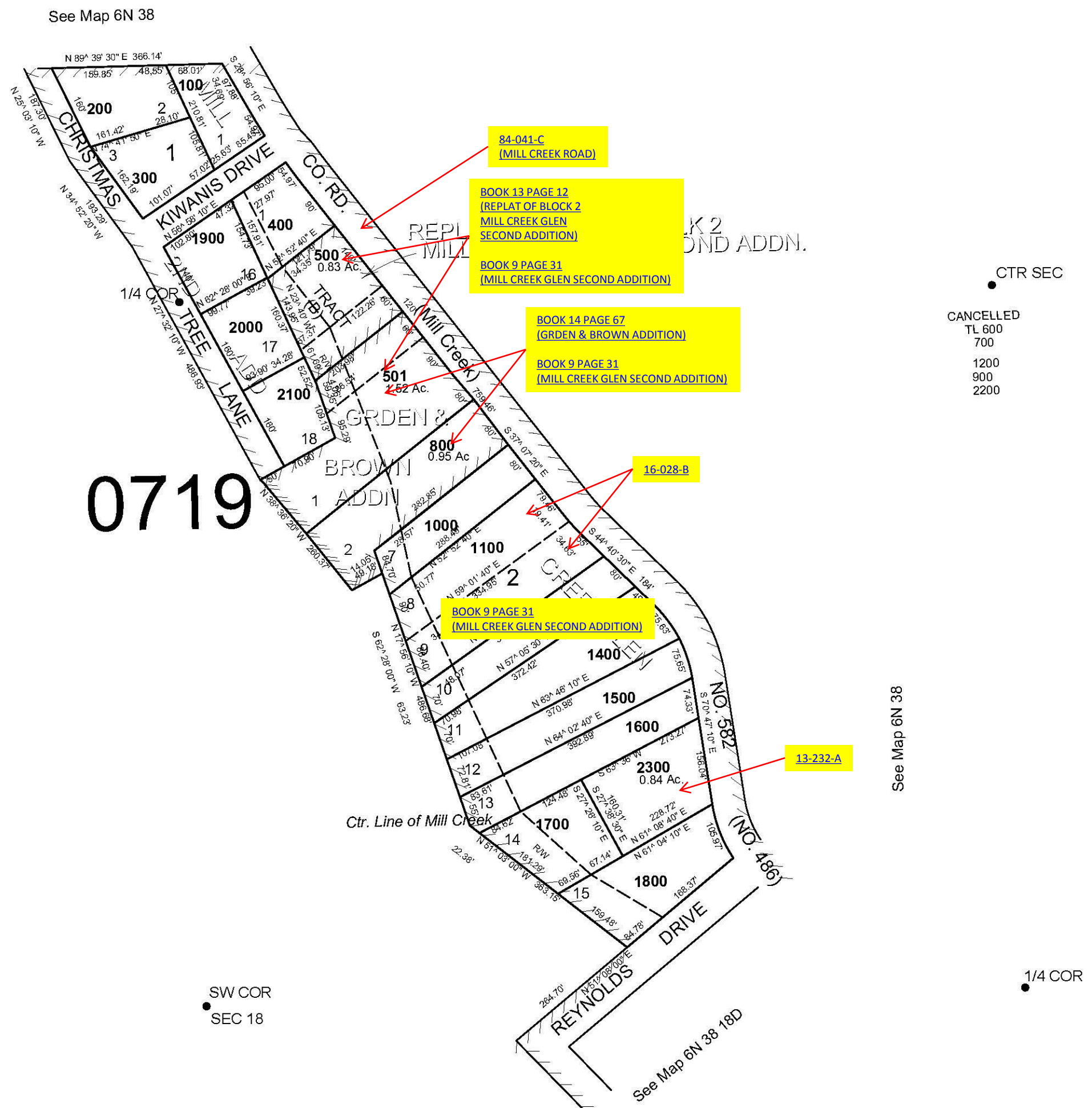
This map was prepared for Assessment and Taxation purposes only and has NOT been prepared for legal, engineering or surveying purposes.

SW1/4 SEC 18 T6N R38E WM UMATILLA COUNTY

SCALE 1"=200'

6N 38 18C

AERIAL PHOTO NO. NZ 6P-6



See Map 6N 38

See Map 6N 38

See Map 6N 38

Revised: 09-08-11

6N 38 18C