

ALSO SEE CORNER RECORDS; G.L.O. SURVEYS

This map was prepared for Assessment & Taxation purposes only and was NOT prepared nor is it suitable for legal, engineering or surveying purposes.

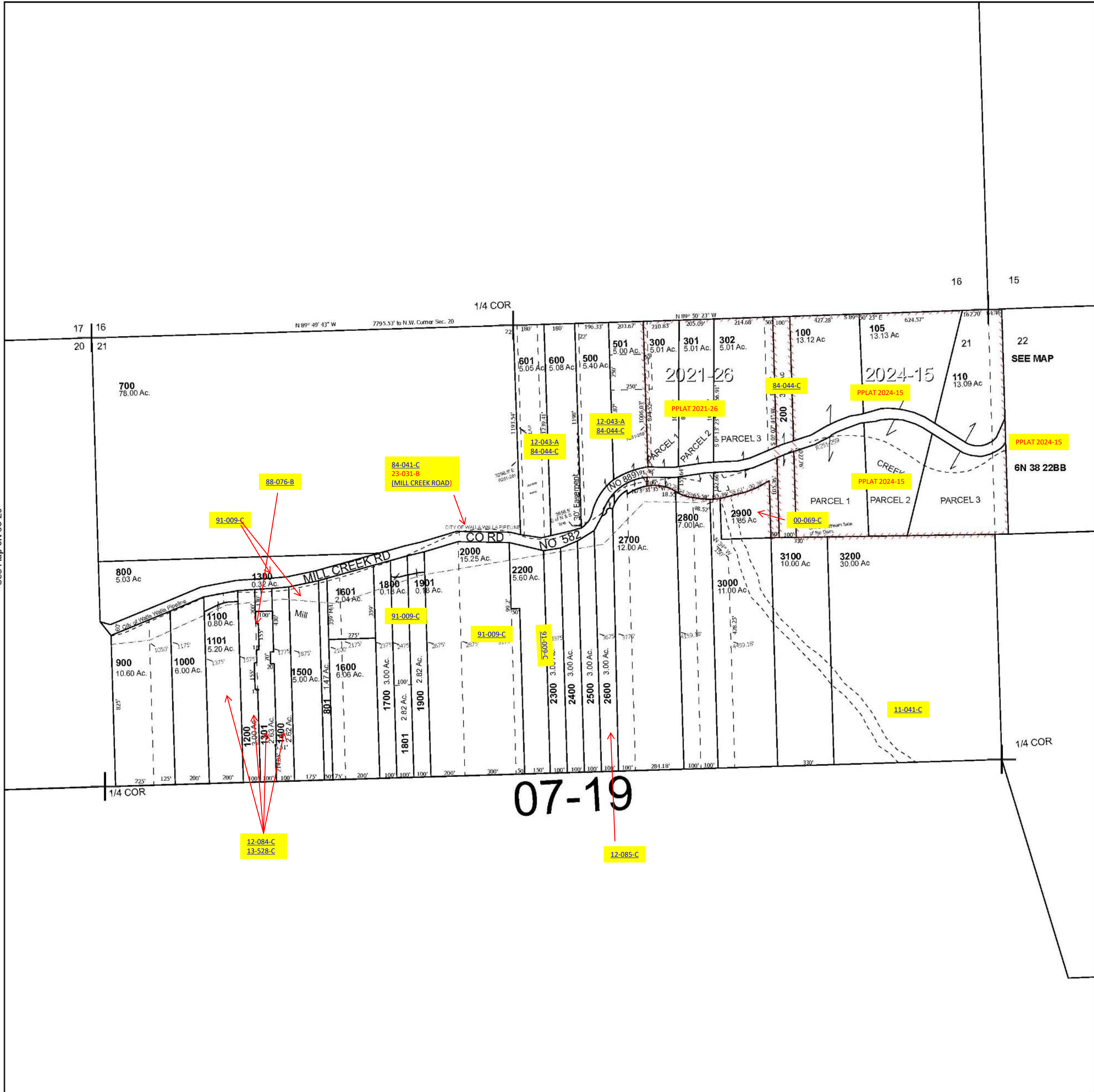
SEC 21 T6N R38E WM UMATILLA COUNTY

6N 38 21

SCALE 1" = 400'

See Map 6N 38

- Cancelled Tax Lots
- 101
 - 400
 - 502
 - 602
 - 603
 - 1102
 - 1802
 - 2100
 - 2001



See Map 6N 38 20

See Map 6N 38

Revised 12/18/2024

See Map 6N 38

6N 38 21