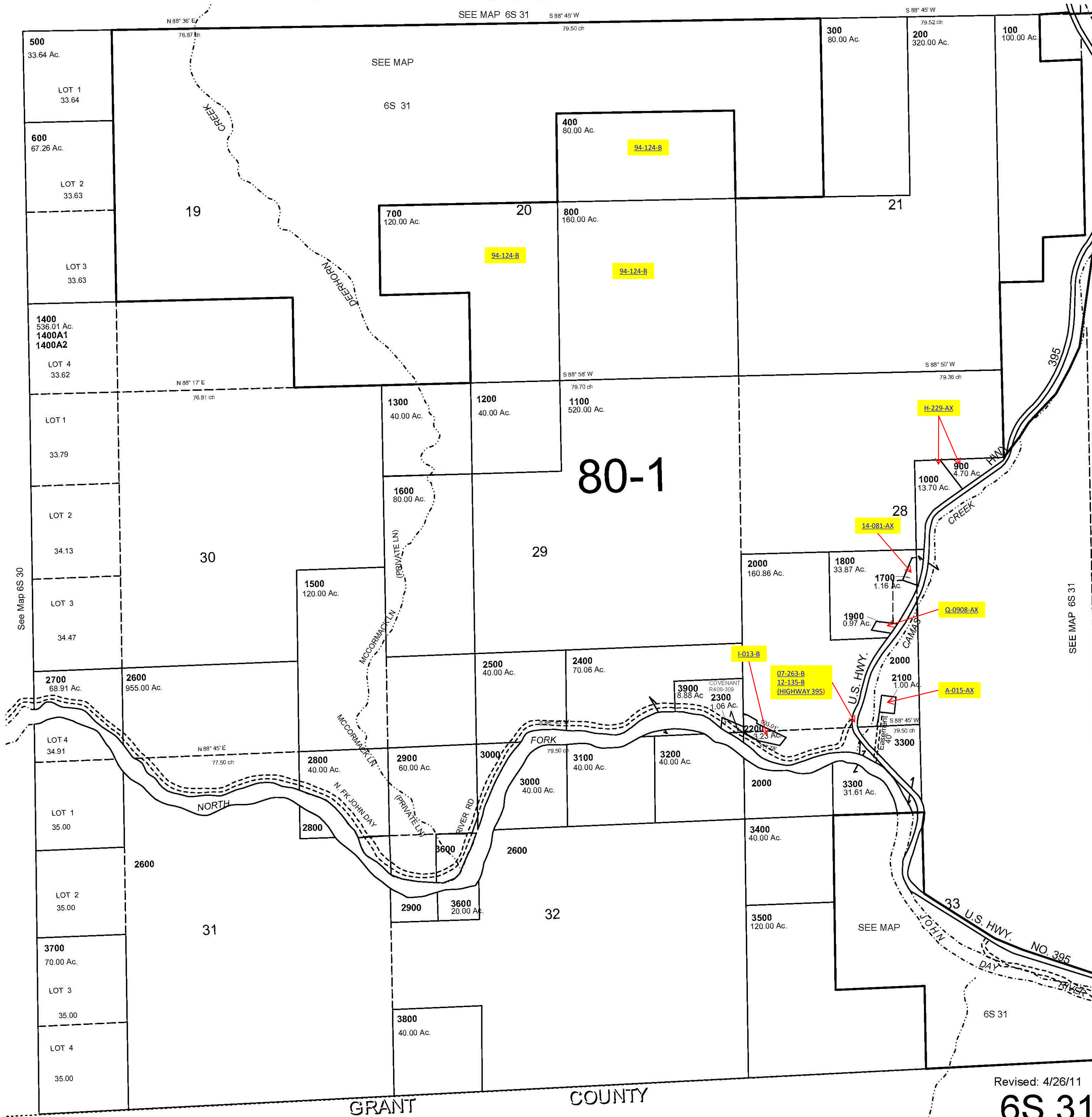


This map was prepared for Assessment & Taxation purposes only and was NOT prepared nor is it suitable for legal, engineering or surveying purposes.

1"=1000'

SW1/4 T6S R31E WM UMATILLA COUNTY

6S 31C
AERIAL PHOTO NO.9P 5-12, 21-28 & 10P 115-123



Revised: 4/26/11

6S 31C