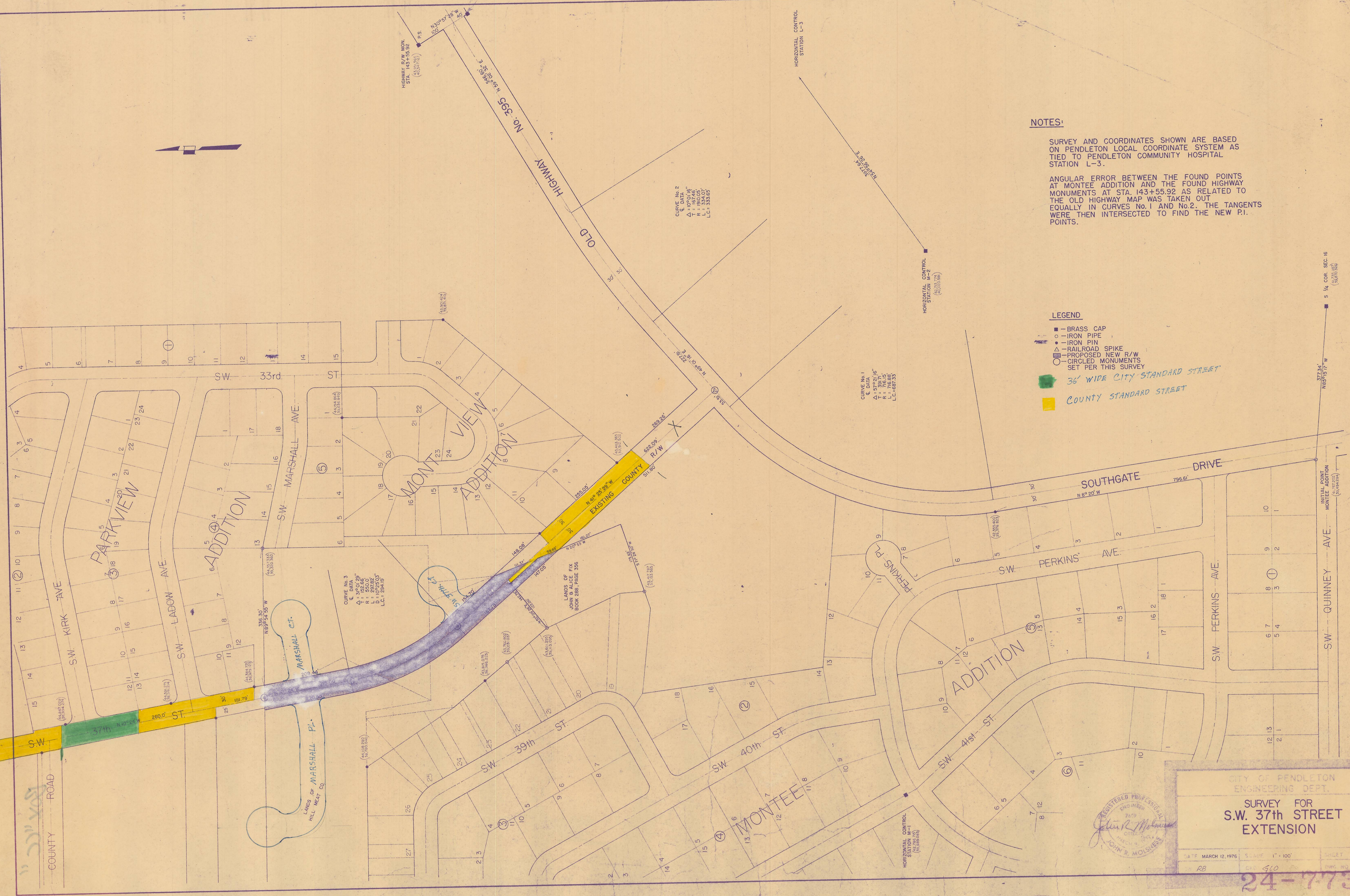


201.654

7-22-28 26-7

1302



NOTES:

SURVEY AND COORDINATES SHOWN ARE BASED ON PENDLETON LOCAL COORDINATE SYSTEM AS TIED TO PENDLETON COMMUNITY HOSPITAL STATION L-3.

ANGULAR ERROR BETWEEN THE FOUND POINTS AT MONTEE ADDITION AND THE FOUND HIGHWAY MONUMENTS AT STA. 143+55.92 AS RELATED TO THE OLD HIGHWAY MAP WAS TAKEN OUT EQUALLY IN CURVES No. 1 AND No. 2. THE TANGENTS WERE THEN INTERSECTED TO FIND THE NEW P.I. POINTS.

LEGEND

- BRASS CAP
- IRON PIPE
- IRON PIN
- ▲ RAILROAD SPIKE
- △ PROPOSED NEW R/W
- CIRCLED MONUMENTS SET PER THIS SURVEY
- 36' WIDE CITY STANDARD STREET
- COUNTY STANDARD STREET

CURVE No. 3
 C. DATA
 Δ: 316° 01' 29"
 R: 255.00'
 L: 297.82'
 L.C.: 234° 19'

CURVE No. 2
 C. DATA
 Δ: 106° 07' 48"
 R: 190.00'
 L: 333.55'

CURVE No. 1
 C. DATA
 Δ: 57° 21' 16"
 R: 716.15'
 L: 716.85'
 L.C.: 69° 33'

REGISTERED PROFESSIONAL ENGINEER
 JOHN R. MOLES
 JOHN R. MOLES

CITY OF PENDLETON
 ENGINEERING DEPT.
 SURVEY FOR
 S.W. 37th STREET
 EXTENSION

DATE: MARCH 12, 1976 SCALE: 1" = 100' SHEET: RB OF 410

24-7734