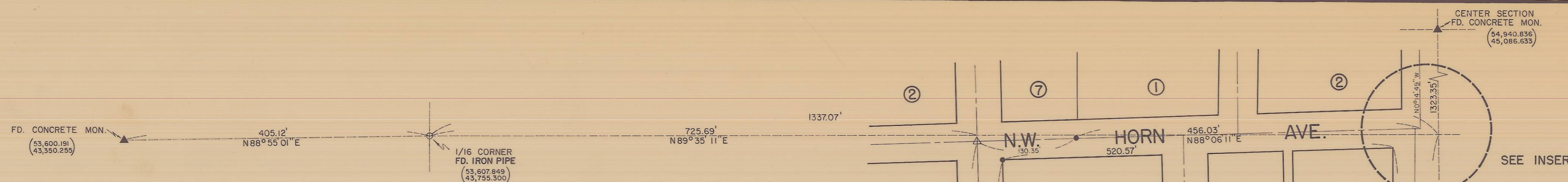


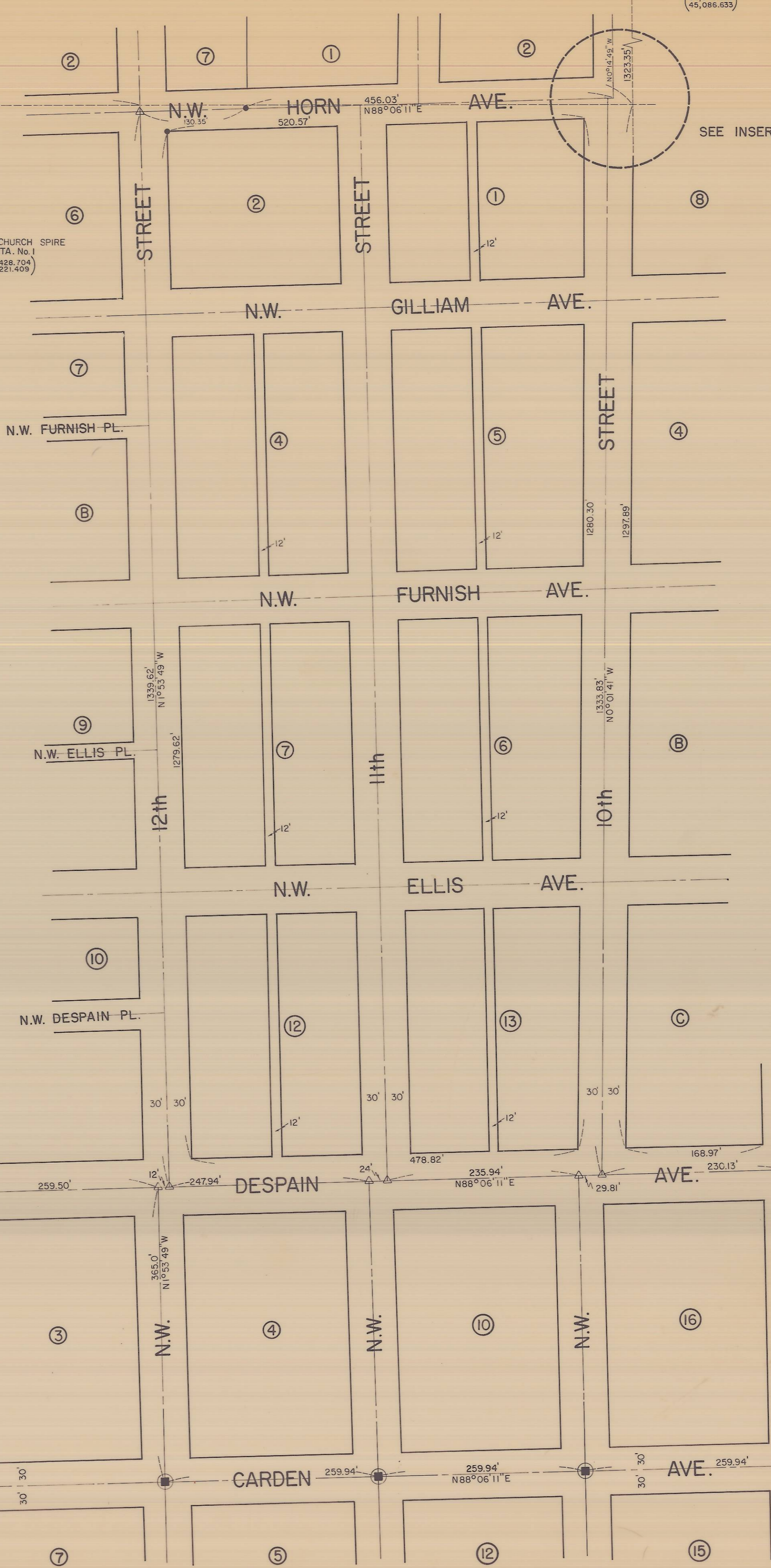
INSERT
SCALE: 1" = 20'



MORMAN CHURCH SPIRE
H.C. STA. No. 1
(53,428.709)
(53,251.404)

(52,247.232)
(43,964.898)
INITIAL POINT OF
BROWN'S COURT ADDITION

FOUND IRON PIN
AT INTERSECTION
OF MAIN AND
DESPAIN
(52,352.447)
(47,41.539)



NOTES:
MONUMENTS SET ARE FROM AN ADJUSTED BALANCED CONTROL NET AND BASED UPON ORIGINAL FOUND MONUMENTS TO THE NORTH AND ON DESPAIN AVE.
ALL BEARINGS SHOWN ARE BASED ON THE PENDLETON LOCAL GRID.
BRASS CAPS SHOWN SET PER THIS SURVEY REPLACE ORIGINAL SPIKES SET.

REGISTERED
PROFESSIONAL
LAND SURVEYOR
Richard A. Bordenkircher
OREGON
RICHARD A. BORDENKIRCHER
2143

- LEGEND**
- - STONE
 - - VALVE BOX
 - - BRASS CAP
 - ▲ - RR SPIKE
 - △ - BOLT
 - - IRON PIPE
 - - IRON PIN
 - - CIRCLED MONUMENTS SET PER THIS SURVEY

CITY OF PENDLETON
ENGINEERING DEPT.

**CONTROL SURVEY
N.W. CARDEN R/W**

RECEIVED BY
Umatilla County Surveyor
Date 12-89
Rec'd by [Signature]
No. 89-133-C

DATE: SEPT., 1985	SCALE: 1" = 100'	SHEET 2 OF 2
DN. RB	CKD. GLO	DWG. NO.

24-7723