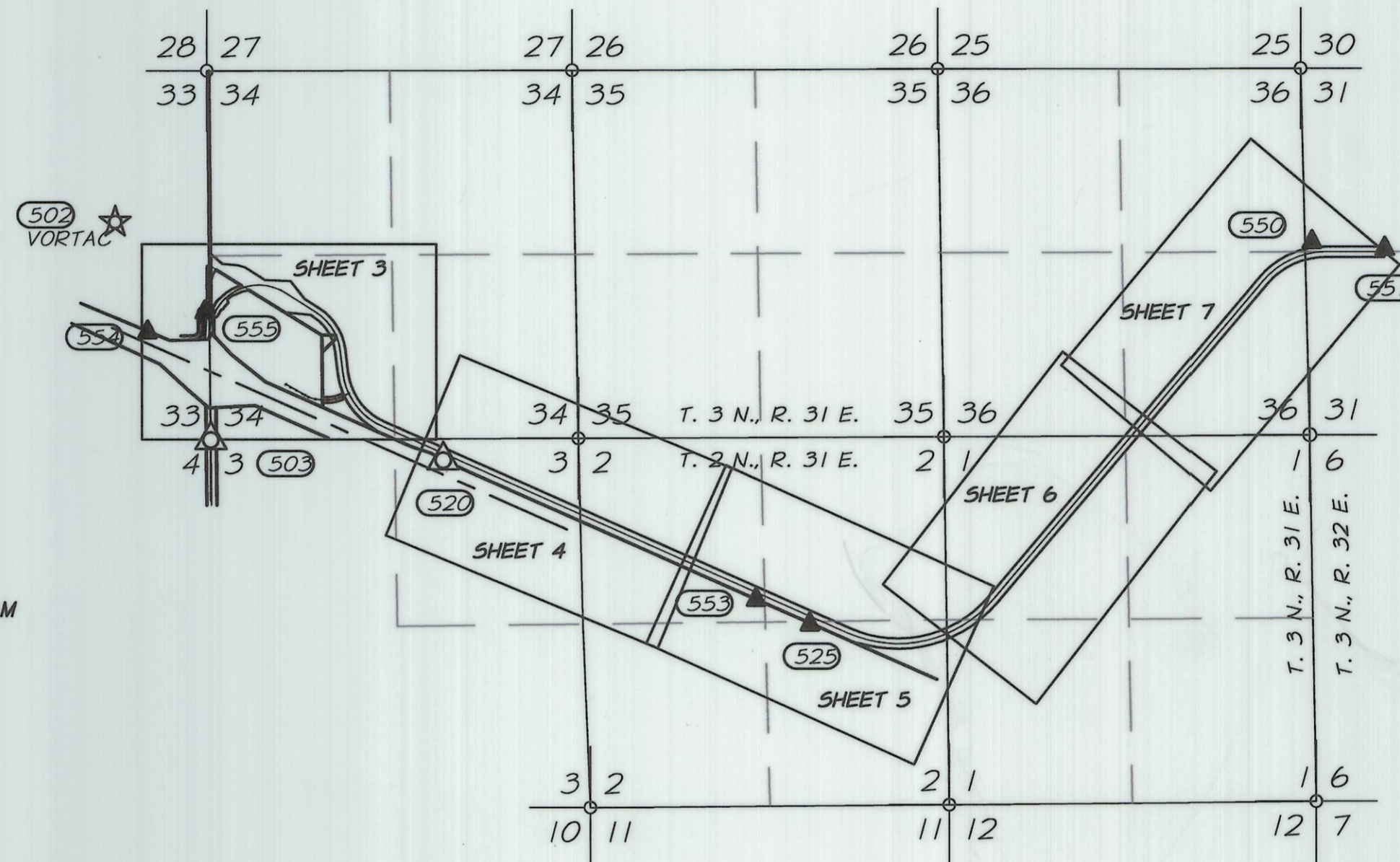




556

SHEET INDEX  
NOT TO SCALE



**SHEET INDEX**

- SHEET 1 - SHEET LAYOUT, NARRATIVE, PROJECT OVERVIEW
- SHEET 2 - MONUMENT COORDINATE AND INFORMATION TABLES, NETWORK DIAGRAM
- SHEET 3 - RECOVERED MONUMENT TABLE, CENTERLINE ALIGNMENT
- SHEET 4 - RECOVERED MONUMENT TABLE, CENTERLINE ALIGNMENT
- SHEET 5 - RECOVERED MONUMENT TABLE, CENTERLINE ALIGNMENT
- SHEET 6 - RECOVERED MONUMENT TABLE, CENTERLINE ALIGNMENT
- SHEET 7 - RECOVERED MONUMENT TABLE, CENTERLINE ALIGNMENT

**NARRATIVE:**

THIS SURVEY IS PERFORMED POST CONSTRUCTION OF THE BARNHART AIRPORT ROAD CONNECTOR FOR THE PURPOSE OF MONUMENTING THE RIGHT OF WAY OF THAT ROAD. THE RIGHT OF WAY WAS OBTAINED IN FEE BY THE CITY OF PENDLETON IN 2008 AND THE DESCRIPTION FOR THE PROPERTY IS CONTAINED IN UMATILLA COUNTY DOCUMENT #'S 2008-5410545, 2008-5410561 & 2008-5410493.

THIS SURVEY ALSO DESCRIBES AND LOCATES A NUMBER OF LAND CORNER MONUMENTS THAT WERE EITHER USED IN THE PREPARATION OF THE RIGHT OF WAY DOCUMENTS, WERE IN DANGER OF DESTRUCTION BY CONSTRUCTION ACTIVITIES OR BOTH. IN PREPARATION FOR CONSTRUCTION A NETWORK CONTROL SURVEY WAS MADE USING REAL-TIME AND STATIC GPS SURVEY TECHNIQUES AND THE NETWORK WAS ADJUSTED BY LEAST SQUARES. NETWORK ADJUSTMENT DATA IS SHOWN ON SHEET 2 OF THIS SURVEY.

THE CONTROL NETWORK WAS INITIALLY REALIZED IN NAD83 (1991) OREGON STATE PLANE COORDINATE SYSTEM, NORTH ZONE, INTERNATIONAL FEET. DESIGN CONSIDERATIONS, SPECIFICALLY THE NECESSITY TO TIE THE SURVEY TO THE CITY OF PENDLETON'S LIDAR DATA SET, CAUSED A SHIFT TO THE CITY'S DATUM. THE METADATA FOR THE CITY'S DATA DESCRIBED IT AS A REALIZATION OF NAD83 EXPRESSED IN OREGON STATE PLANE NORTH ZONE, US SURVEY FEET, ALTHOUGH AN EXACT SCALE FACTOR FOR TRANSLATION BETWEEN THE TWO SYSTEMS WAS NEVER DEVELOPED. SHEET TWO EXPRESSES BOTH SETS OF COORDINATES FOR THE SAME MONUMENT TO ASSIST IN DEVELOPING A METHOD OF TRANSLATION IF NECESSARY OR DESIRED.

TWO PUBLIC LAND SURVEY CORNERS, ONE ON EACH END OF THE PROJECT, WERE DESTROYED BY CONSTRUCTION ACTIVITIES. THEY HAVE BEEN REPLACED AND CORNER REMONUMENTATION SHEETS HAVE BEEN FILED WITH UMATILLA COUNTY, AS REFERENCED HEREON.

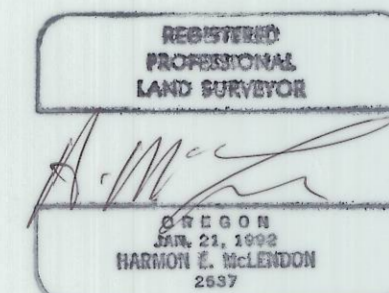
**REFERENCE DOCUMENTS**

- UMATILLA COUNTY SURVEY 88-61-C
- UMATILLA COUNTY SURVEY 90-32-A
- ODOT ROW MAP 88-24-21
- UMATILLA COUNTY SURVEY 88-19-C
- UMATILLA COUNTY SURVEY 90-47-B
- PARTITION PLAT 1999-50
- UMATILLA COUNTY DOCUMENT #2008-5410545
- UMATILLA COUNTY DOCUMENT #2008-5410561
- UMATILLA COUNTY DOCUMENT #2008-5410493
- CORNER MONUMENTATION DOCUMENT 10-22-R
- CORNER MONUMENTATION DOCUMENT 10-23-R

**BASIS OF BEARINGS**

BEARINGS ARE NAD83-91 OREGON STATE PLANE, NORTH ZONE GRID. AS DERIVED FROM SATELLITE OBSERVATIONS BETWEEN CONTROL STATION VORTAC AND PENDAIR. SAID BEARING IS N84°54'42"W.

LEGEND	
▲	SET NETWORK POINT
☆	FOUND GPS STATION
△	FOUND MONUMENT USED AS NETWORK POINT

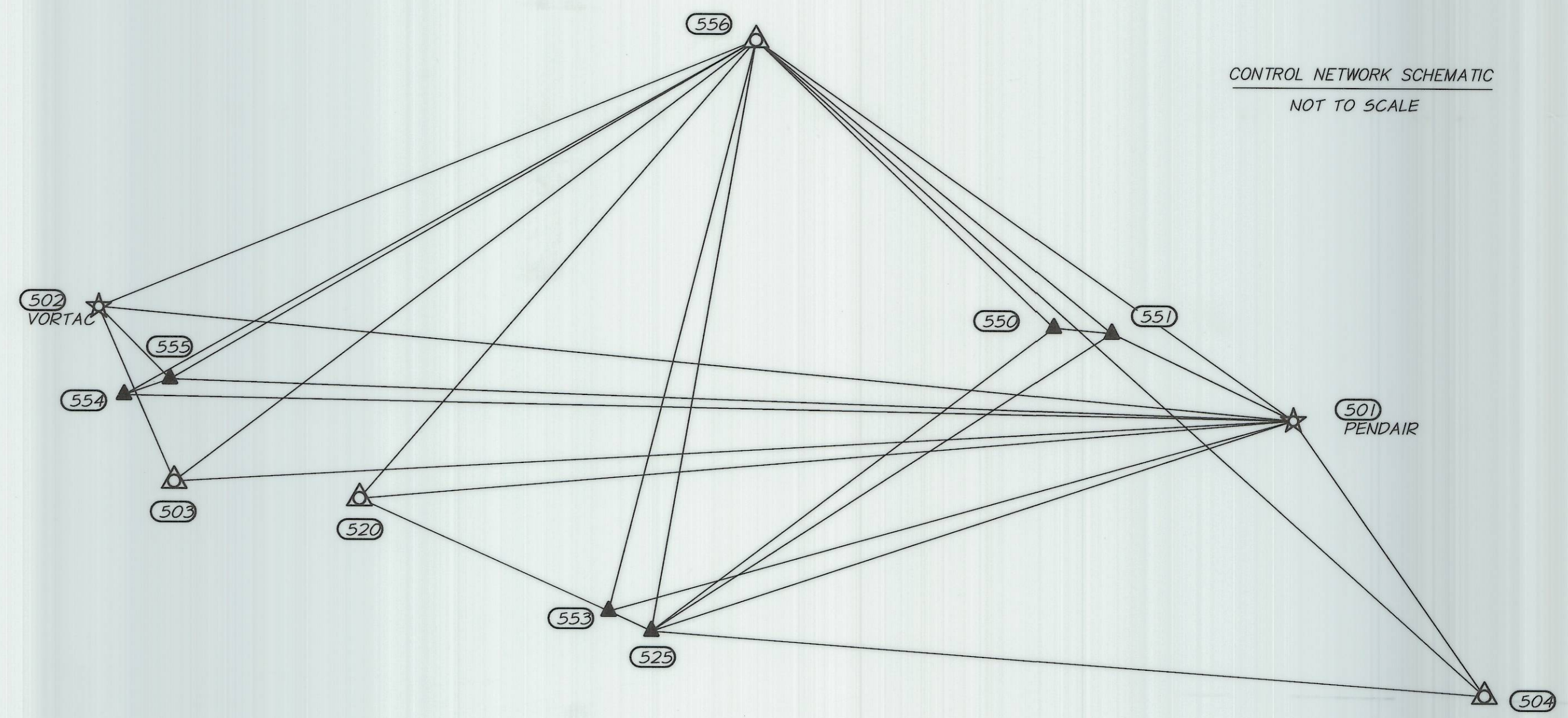


ANDERSON-PERRY & ASSOCIATES  
1901 N. FIR ST., LA GRANDE, OR. 97850  
HORIZONTAL CONTROL, RECOVERY AND RETRACEMENT SURVEY  
BARNHART AIRPORT ROAD CONNECTOR  
UMATILLA COUNTY

CITY OF PENDLETON  
1165 UNION ST. NE STE 200  
SALEM, OR., 97301

MARCH, 2010  
SCALE: AS SHOWN  
SHEET 1 OF 7

RECEIVED BY  
Umatilla County Surveyors  
Date 4-10  
Rec'd by KK  
No. 10-55-B



CONTROL NETWORK SCHEMATIC  
NOT TO SCALE

NETWORK POINT COORDINATE TABLE LOCAL DATUM PLANE U.S. SURVEY FEET (SEE NARRATIVE)

95% CONFIDENCE REGIONS

PT. NO.	LDP NORTHING	LDP EASTING	ELEVATION	DESCRIPTION	SEMI MAJOR AXIS	SEMI MINOR AXIS	AZIMUTH OF SEMI MAJOR
501	742611.688	8622646.146	1524.27	3 1/2" USC&G BRASS CAP ON 1'x1' CONCRETE PEDESTAL STAMPED "PENDAIR 1963"	N/A (FIXED)	N/A	N/A
502	744537.884	8601013.328	1575.34	3 1/2" USC&G BRASS CAP ON 1'x1' CONCRETE PEDESTAL STAMPED "VORTAC"	N/A	N/A	N/A
503	741406.962	8602391.984	1622.74	2 1/2" BRASS CAP STAMPED WITH "X". CAP SCARRED.	0.058	0.039	164°35'
504	737663.099	8626136.053	1178.51	2 3/4" BRASS CAP STAMPED "STATE HIGHWAY DEPARTMENT ELEVATION B306 1941" FLUSH IN 8"x8" CONCRETE	0.060	0.050	169°29'
520	741114.143	8605744.206	1576.97	1 1/2" ALUMINUM CAP. NO VISIBLE MARKINGS. MARKED WITH SHRW PADDLE (WB 1037+00 125 FT LT)	0.062	0.049	160°33'
525	738753.214	8611037.881	1618.78	1/2" IRON ROD WITH RED PLASTIC CAP INSCRIBED "APA CONTROL"	0.029	0.024	161°50'
550	744256.338	8618299.378	1472.85	1/2" IRON ROD WITH RED PLASTIC CAP INSCRIBED "APA CONTROL"	0.042	0.034	172°53'
551	744161.844	8619351.620	1500.68	1/2" IRON ROD WITH RED PLASTIC CAP INSCRIBED "APA CONTROL"	0.030	0.024	176°43'
553	739109.109	8610261.584	1616.93	1/2" IRON ROD WITH RED PLASTIC CAP INSCRIBED "APA CONTROL"	0.038	0.031	178°17'
554	742957.472	8601481.032	1586.86	1/2" IRON ROD WITH RED PLASTIC CAP INSCRIBED "APA CONTROL"	0.063	0.038	04°01'
555	743247.010	8602307.740	1559.79	1/2" IRON ROD WITH RED PLASTIC CAP INSCRIBED "APA CONTROL"	0.049	0.032	179°46'
556	749420.392	8612872.767	1376.24	2 1/4" ALUMINUM CAP INSCRIBED "TIN R31E 1/4 526 - 527 2006 PLS 1106" 1.3' BELOW SURFACE	0.027	0.021	12°54'

**LEGEND**

- SET NETWORK POINT
- FOUND GPS STATION
- FOUND MONUMENT USED AS NETWORK POINT
- LINES OF OBSERVATION

NETWORK MONUMENT INFORMATION  
(GRID COORDINATES—OREGON COORDINATE SYSTEM NORTH ZONE) NAD 83/91 INTERNATIONAL FEET

STATION DESIGNATION	NORTHING (GRID)	EASTING (GRID)	LATITUDE (N)	LONGITUDE (W)
501	742612.491	8622663.336	45-41-30.56061	118-51-14.66709
502	744539.662	8601030.605	45-41-53.82329	118-56-18.84864
503	741408.669	8602409.162	45-41-22.65299	118-56-00.28425
504	737663.727	8626153.000	45-40-41.00632	118-50-26.94657
520	741115.710	8605761.322	45-41-19.11672	118-55-13.15038

REGISTERED PROFESSIONAL LAND SURVEYOR  
*[Signature]*  
RENEWALS 12/31/10

ANDERSON-PERRY & ASSOCIATES  
1901 N. FIR ST., LA GRANDE, OR. 97850  
HORIZONTAL CONTROL, RECOVERY AND RETRACEMENT SURVEY  
BARNHART AIRPORT ROAD CONNECTORUMATILLA COUNTY  
CITY OF PENDLETON MARCH, 2010  
1165 UNION ST. NE STE 200 SALEM, OR., 97301 SCALE: AS SHOWN  
RECEIVED BY SHEET 2 OF 7

Umatilla County Surveyor  
Date 4-10  
Rec'd by KK  
No. 10-05-B

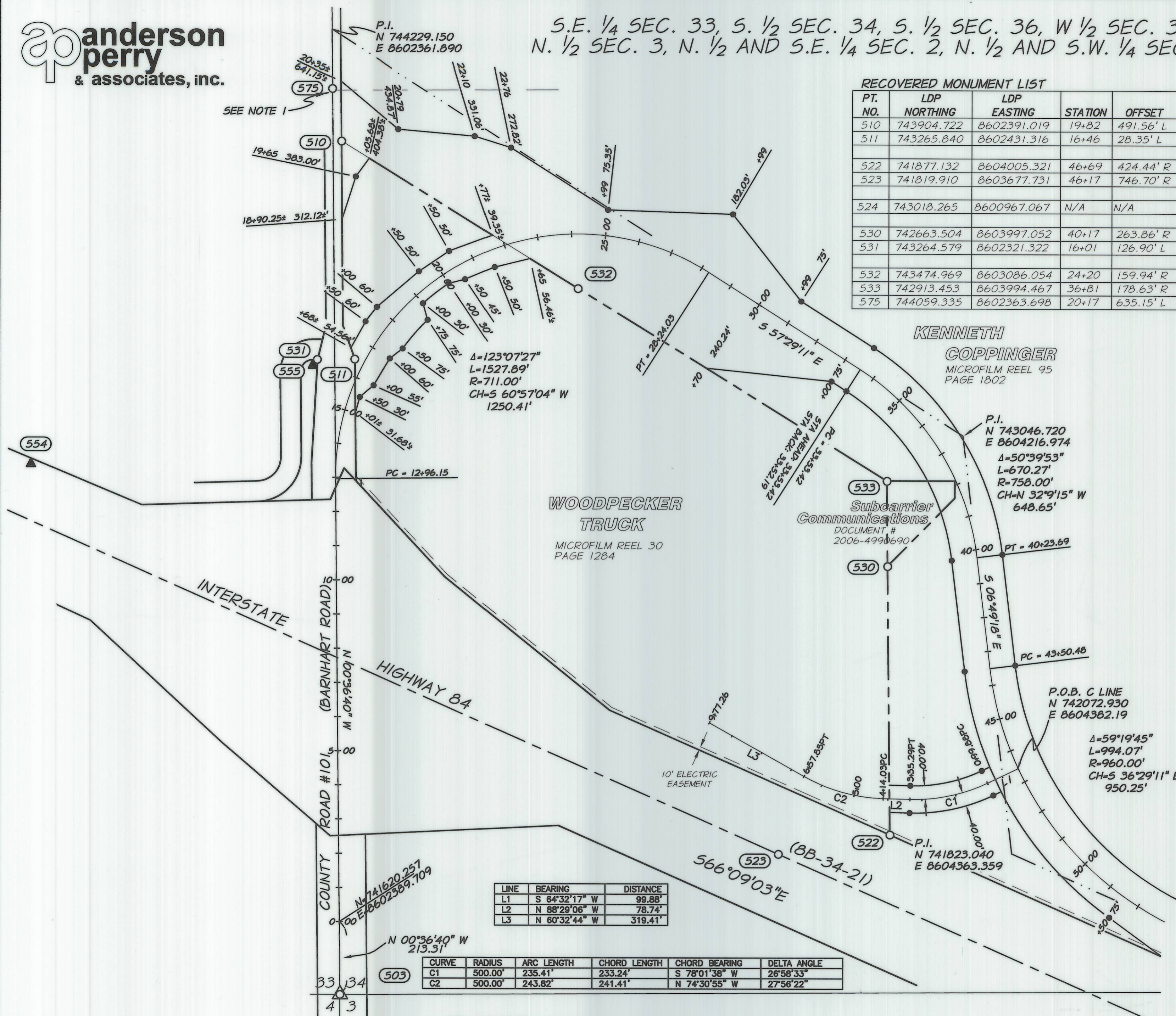
S.E. 1/4 SEC. 33, S. 1/2 SEC. 34, S. 1/2 SEC. 36, W 1/2 SEC. 31, T. 3 N., R. 31 E., W.M.,  
N. 1/2 SEC. 3, N. 1/2 AND S.E. 1/4 SEC. 2, N. 1/2 AND S.W. 1/4 SEC. 1, T. 2 N., R. 31 E., W.M.

**RECOVERED MONUMENT LIST**

PT. NO.	LDP NORTHING	LDP EASTING	STATION	OFFSET	DESCRIPTION & REFERENCE DOCUMENTS
510	743904.722	8602391.019	19+82	491.56' L	5/8" IR W/ RED PLASTIC CAP MARKED "PLS 1333"
511	743265.840	8602431.316	16+46	28.35' L	1 1/2" ALUMINUM CAP MARKED "ORE STATE HWY DEPT." WITNESS POST MARKED "TB 42+00 60' LT"
522	741877.132	8604005.321	46+69	424.44' R	5/8" IR W/ RED PLASTIC CAP MARKED "PLS 1333"
523	741819.910	8603677.731	46+17	746.70' R	2 3/4" BRASS CAP SIT IN CONCRETE. WITNESS POST MARKED "1015+24.18 POT COMMON CENTERLINE"
524	743018.265	8600967.067	N/A	N/A	2 3/4" BRASS CAP SIT IN CONCRETE. WITNESS POST MARKED "989+59.6 POT COMMON CENTERLINE"
530	742663.504	8603997.052	40+17	263.86' R	5/8" IR W/ 1 1/2" ALUMINUM CAP MARKED "KEL 933"
531	743264.579	8602321.322	16+01	126.90' L	ALUMINUM CAP W/ WITNESS POST MARKED "TB 42+00 50.00' RT"
532	743474.969	8603086.054	24+20	159.94' R	5/8" IR W/ RED PLASTIC CAP MARKED "PLS 1333"
533	742913.453	8603994.467	36+81	178.63' R	5/8" IR - BENT - TIED SPIN HOLE
575	744059.335	8602363.698	20+17	635.15' L	2 1/2" BRASS CAP PROPERLY MARKED

**LEGEND**

- FOUND MONUMENT NOTED IN TABLE
- SET 5/8" x 30" IRON ROD WITH 1 1/2" ALUMINUM CAP MARKED APA OR2537 WA35140
- ▲ SET NETWORK POINT
- △ FOUND MONUMENT USED AS NETWORK POINT
- EDGE OF PAVEMENT
- RIGHT-OF-WAY
- SECTION LINE
- - - QUARTER SECTION LINE



LINE	BEARING	DISTANCE
L1	S 64°32'17" W	99.88'
L2	N 88°29'06" W	78.74'
L3	N 60°32'44" W	319.41'

CURVE	RADIUS	ARC LENGTH	CHORD LENGTH	CHORD BEARING	DELTA ANGLE
C1	500.00'	235.41'	233.24'	S 78°01'38" W	26°58'33"
C2	500.00'	243.82'	241.41'	N 74°30'55" W	27°56'22"

**SET MONUMENT LIST**

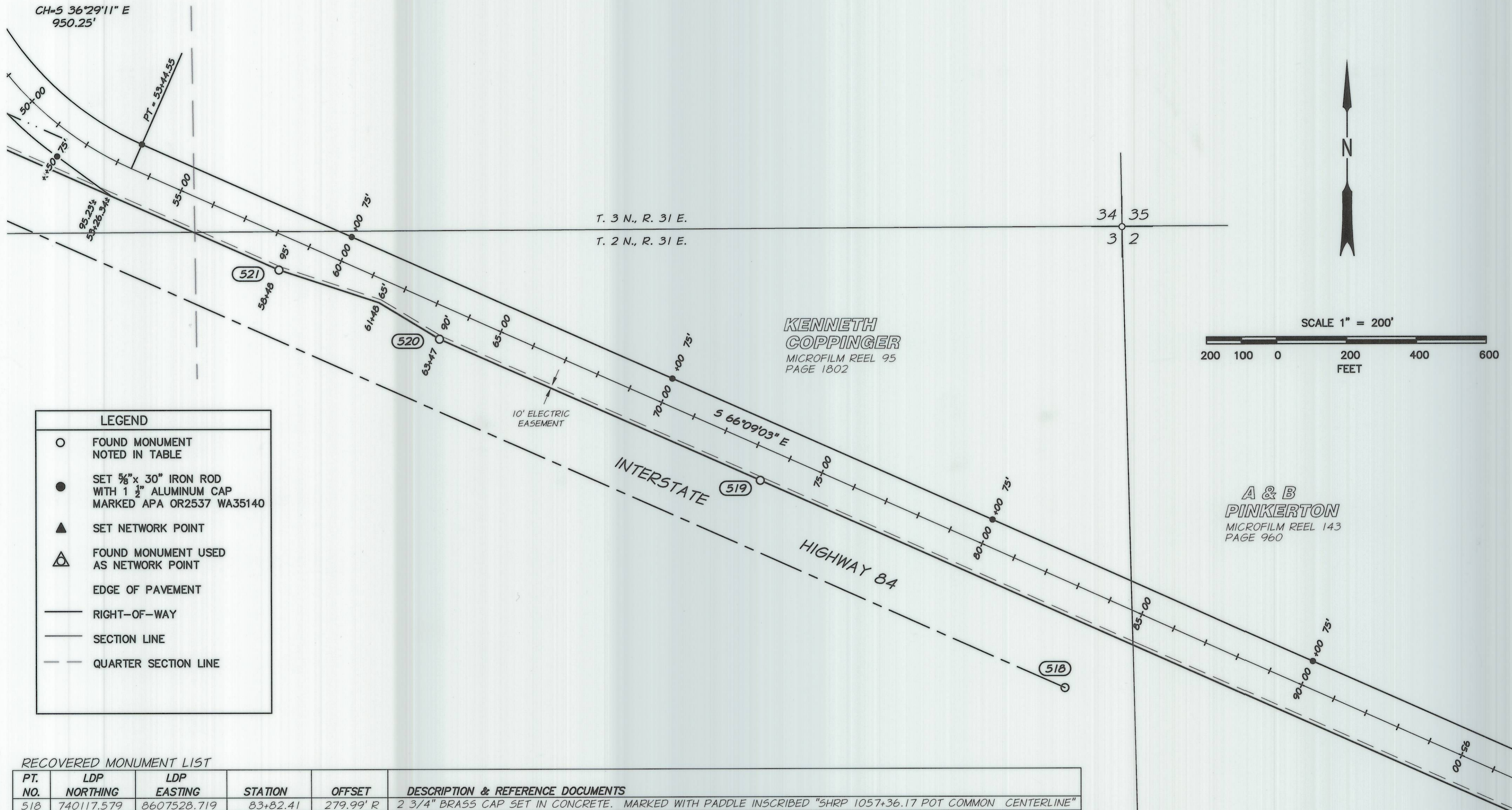
PT. NO.	LDP NORTHING	LDP EASTING	STATION	OFFSET	DESCRIPTION & REFERENCE DOCUMENTS
554	742957.472	8601481.032	13+18.59	895.165 L	1/2" IRON ROD WITH RED PLASTIC CAP INSCRIBED "APA CONTROL"
555	743247.010	8602307.740	15+83.23	132.445 L	1/2" IRON ROD WITH RED PLASTIC CAP INSCRIBED "APA CONTROL"

**NOTES:**  
1. THIS MONUMENT WAS DESTROYED BY CONSTRUCTION ACTIVITY. IT WAS RESET IN MARCH OF 2010. MONUMENTATION RECORD FILED SEPARATELY AS UMATILLA COUNTY RECORD 10-22-R.

REGISTERED PROFESSIONAL LAND SURVEYOR  
 H.M.  
 OREGON  
 APR 21, 1982  
 HARRISON S. McLENDON  
 2507  
 Renewed 12/31/10  
 SCALE 1" = 200'  
 200 100 0 200 400 600 FEET

ANDERSON-PERRY & ASSOCIATES  
 1901 N. FIR ST., LA GRANDE, OR. 97850  
 HORIZONTAL CONTROL, RECOVERY AND RETRACEMENT SURVEY  
 BARNHART AIRPORT ROAD CONNECTOR  
 UMATILLA COUNTY  
 CITY OF PENDLETON MARCH, 2010  
 1165 UNION ST. NE STE 200 SCALE: AS SHOWN  
 SALEM, OR., 97301 RECEIVED BY SHEET 3 OF 7

Umatilla County Surveyors  
 Date 4-10  
 Drawn by KK  
 No. 10-55-B



**LEGEND**

- FOUND MONUMENT NOTED IN TABLE
- SET 5/8" x 30" IRON ROD WITH 1 1/2" ALUMINUM CAP MARKED APA OR2537 WA35140
- ▲ SET NETWORK POINT
- △ FOUND MONUMENT USED AS NETWORK POINT
- EDGE OF PAVEMENT
- RIGHT-OF-WAY
- SECTION LINE
- - - QUARTER SECTION LINE

**RECOVERED MONUMENT LIST**

PT. NO.	LDP NORTHING	LDP EASTING	STATION	OFFSET	DESCRIPTION & REFERENCE DOCUMENTS
518	740117.579	8607528.719	83+82.41	279.99' R	2 3/4" BRASS CAP SET IN CONCRETE. MARKED WITH PADDLE INSCRIBED "SHRP 1057+36.17 POT COMMON CENTERLINE"
519	740709.950	8606658.542	73+47.02	90.04' R	1 1/2" ALUMINUM CAP ON IRON PIPE. MARKED WITH PADDLE INSCRIBED "SHRP 1047+00 125' LT"
520	741114.143	8605744.206	63+47.33	90.05' R	1 1/2" ALUMINUM CAP ON IRON PIPE. MARKED WITH PADDLE INSCRIBED "SHRP WB 1037+00 125' LT"
521	741311.598	8605284.786	58+47.30	95.21' R	1 1/2" ALUMINUM CAP ON IRON PIPE. MARKED WITH PADDLE INSCRIBED "SHRP 1032+00 120' LT"

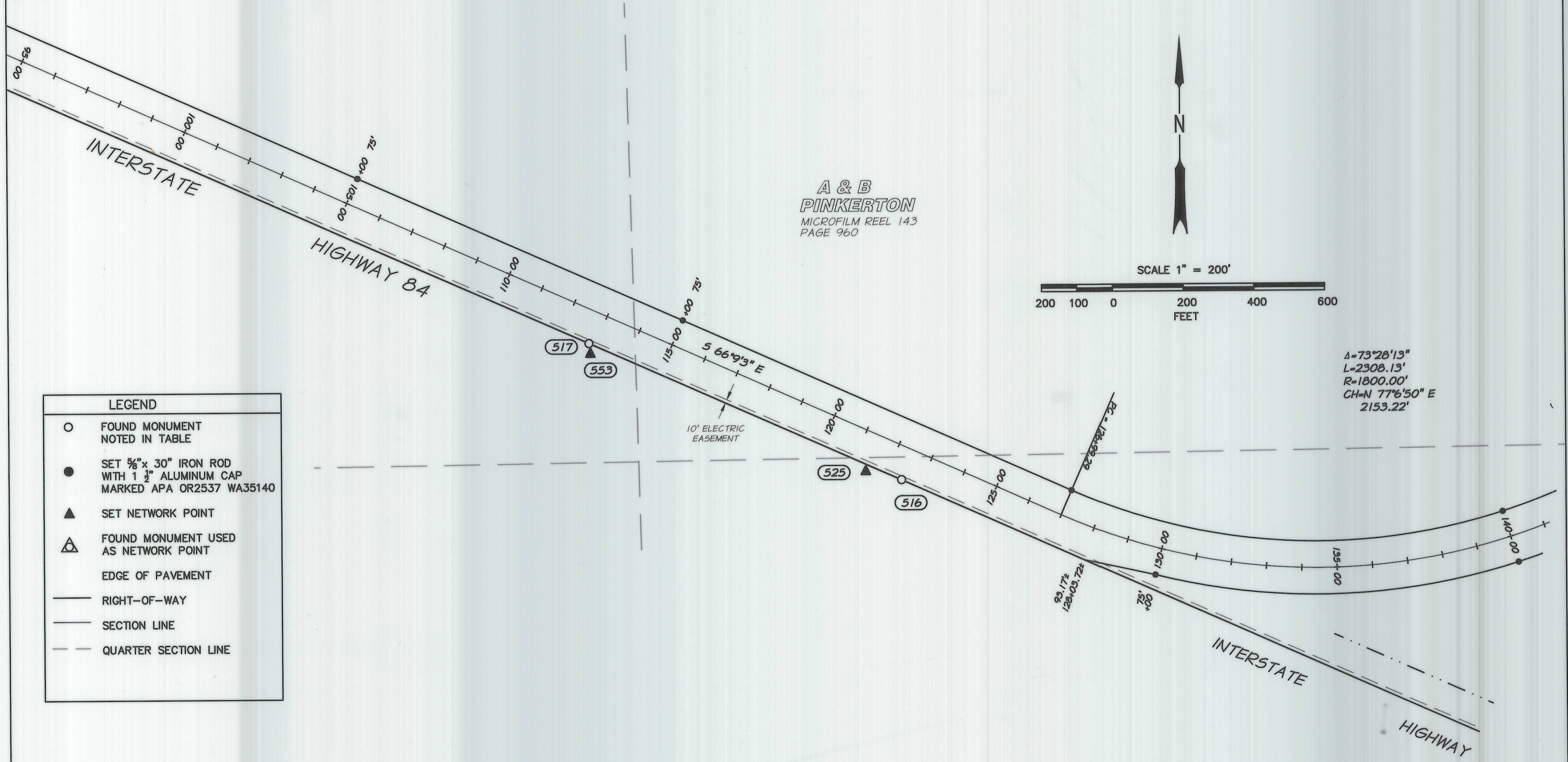
renews 12/31/10  
**REGISTERED PROFESSIONAL LAND SURVEYOR**  
*A. Perry*  
 OREGON  
 JAN. 21, 1999  
 HARMON & WILKINSON  
 2537

**ANDERSON-PERRY & ASSOCIATES**  
 1901 N. FIR ST., LA GRANDE, OR. 97850  
 HORIZONTAL CONTROL, RECOVERY AND RETRACEMENT SURVEY  
 BARNHART AIRPORT ROAD CONNECTOR,  
 UMATILLA COUNTY

CITY OF PENDLETON  
 1165 UNION ST. NE STE 200  
 SALEM, OR., 97301

MARCH, 2010  
 SCALE: AS SHOWN  
 SHEET 4 OF 7

Umatilla County Surveyor  
 Date 4-10  
 Rec'd by KK  
 No. 10-55-B



LEGEND	
○	FOUND MONUMENT NOTED IN TABLE
●	SET 5/8" x 30" IRON ROD WITH 1 1/2" ALUMINUM CAP MARKED APA OR2537 WA35140
▲	SET NETWORK POINT
△	FOUND MONUMENT USED AS NETWORK POINT
—	EDGE OF PAVEMENT
—	RIGHT-OF-WAY
—	SECTION LINE
—	QUARTER SECTION LINE

RECOVERED MONUMENT LIST

PT. NO.	LDP NORTHING	LDP EASTING	STATION	OFFSET	DESCRIPTION & REFERENCE DOCUMENTS
515	737962.401	8612876.820	138+75.39	578.70' R	1 1/2" ALUMINUM CAP ON IRON PIPE. MARKED WITH PADDLE INSCRIBED "SHRP WB 1115+00 125' LT"
516	738729.729	8611139.051	122+45.62	89.58' R	1 1/2" ALUMINUM CAP ON IRON PIPE. MARKED WITH PADDLE INSCRIBED "SHRP WB 1096+00 125' LT"
517	739118.553	8610258.468	112+83.01	90.00' R	1 1/2" ALUMINUM CAP ON IRON PIPE. MARKED WITH PADDLE INSCRIBED "SHRP WB 1086+37.09 125' LT"

SET MONUMENT LIST

PT. NO.	LDP NORTHING	LDP EASTING	STATION	OFFSET	DESCRIPTION & REFERENCE DOCUMENTS
525	738753.214	8611037.881	138+75.39	578.70' R	1/2" IRON ROD WITH RED PLASTIC CAP INSCRIBED "APA CONTROL"
553	739109.109	8610261.584	122+45.62	89.58' R	1/2" IRON ROD WITH RED PLASTIC CAP INSCRIBED "APA CONTROL"

REGISTERED PROFESSIONAL LAND SURVEYOR  
*A.M. [Signature]*  
 OREGON  
 JUL 21, 1999  
 HARMON E. McLENDON  
 2837  
 Renewed 12/31/10

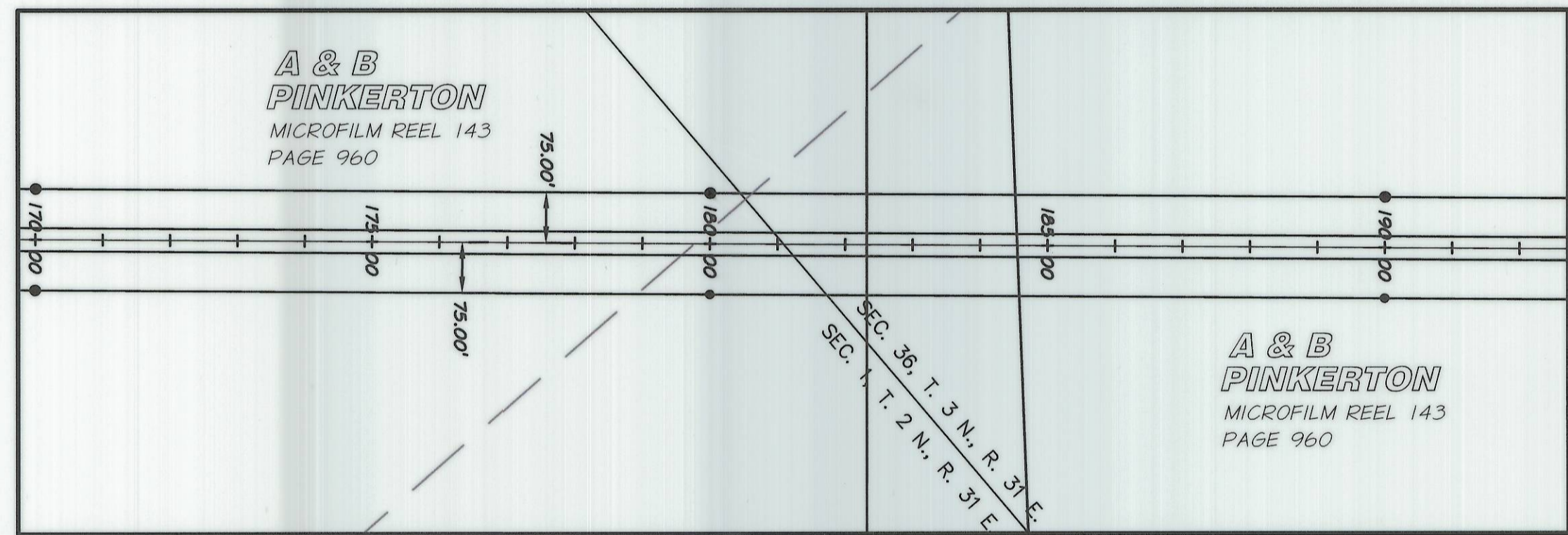
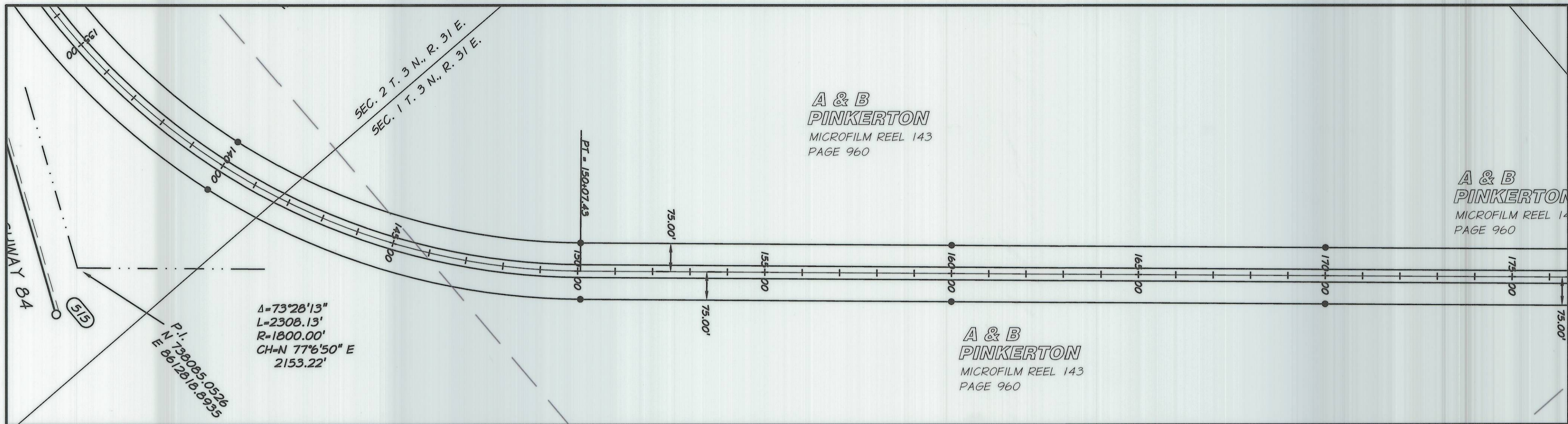
ANDERSON-PERRY & ASSOCIATES  
 1901 N. FIR ST., LA GRANDE, OR. 97850  
 HORIZONTAL CONTROL, RECOVERY AND RETRACEMENT SURVEY  
 BARNHART AIRPORT ROAD CONNECTORUMATILLA COUNTY

CITY OF PENDLETON  
 1165 UNION ST. NE STE 200  
 SALEM, OR., 97301

MARCH, 2010  
 SCALE: AS SHOWN  
 SHEET 5 OF 7

RECEIVED BY

Umatilla County Surveyor  
 Date 4-10  
 Rec'd by KH  
 No. 10-55-B



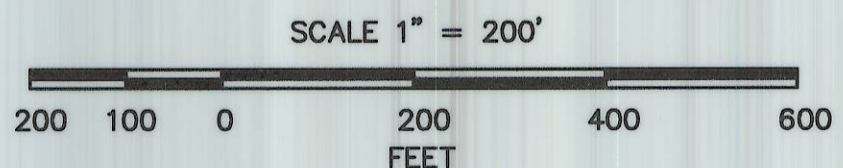
LEGEND	
○	FOUND MONUMENT NOTED IN TABLE
●	SET 5/8" x 30" IRON ROD WITH 1 1/2" ALUMINUM CAP MARKED APA OR2537 WA351400
▲	SET NETWORK POINT
△	FOUND MONUMENT USED AS NETWORK POINT
—	EDGE OF PAVEMENT
—	RIGHT-OF-WAY
—	SECTION LINE
- - -	QUARTER SECTION LINE

REGISTERED PROFESSIONAL LAND SURVEYOR

*[Signature]*

20 REGEN JUN 21, 1992 HARRISON E. McLENDON 2697

Renews 12/31/10



RECOVERED MONUMENT LIST

PT. NO.	LDP NORTHING	LDP EASTING	STATION	OFFSET	DESCRIPTION & REFERENCE DOCUMENTS
515	737962.401	8612876.820	138+75.39	578.70' R	1 1/2" ALUMINUM CAP ON IRON PIPE. MARKED WITH PADDLE INSCRIBED "SHRP WB 1115+00 125' LT"

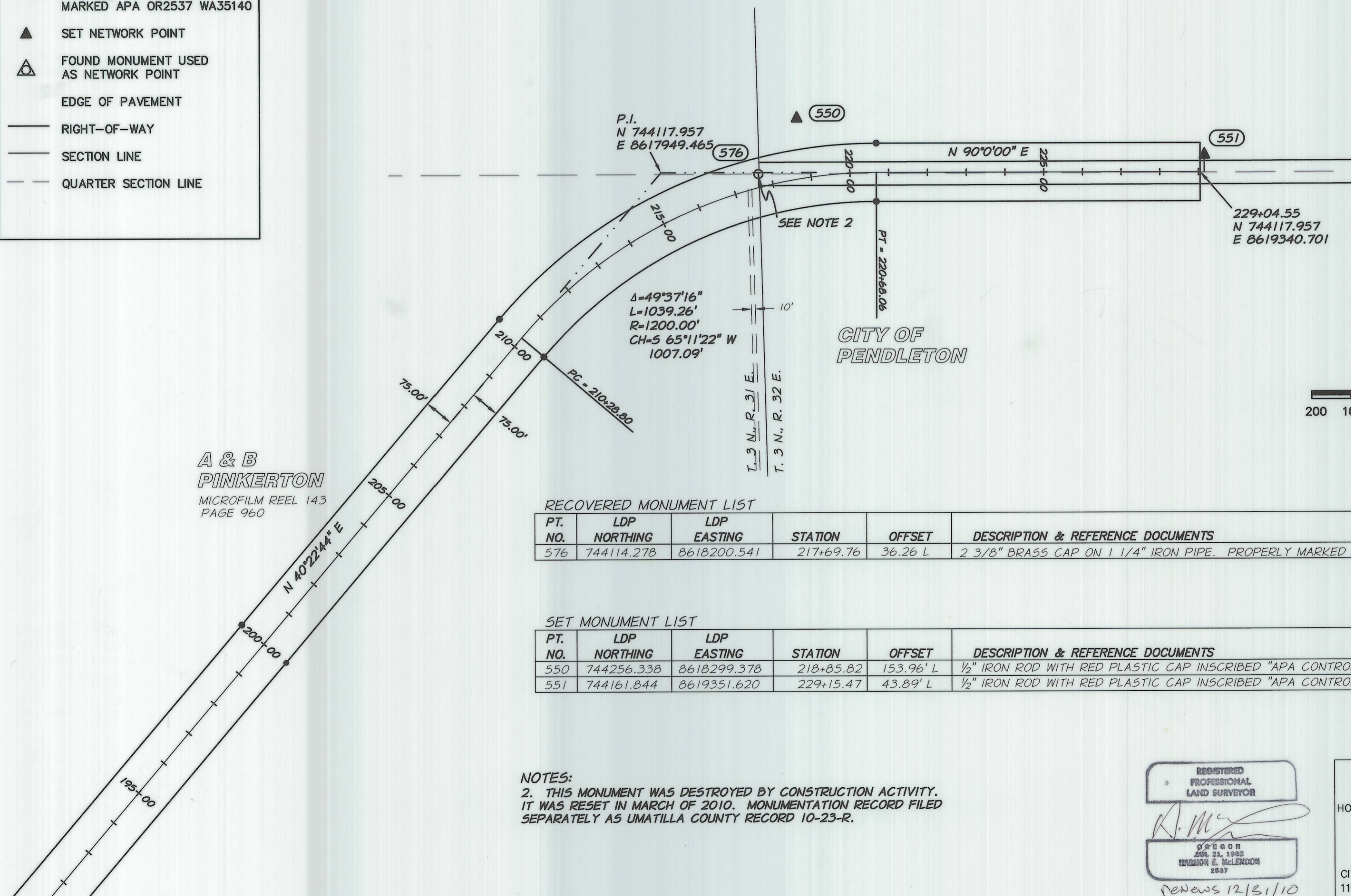
ANDERSON-PERRY & ASSOCIATES  
1901 N. FIR ST., LA GRANDE, OR. 97850

HORIZONTAL CONTROL, RECOVERY AND RETRACEMENT SURVEY  
BARNHART AIRPORT ROAD CONNECTOR  
UMATILLA COUNTY

CITY OF PENDLETON MARCH, 2010  
1165 UNION ST. NE STE 200 SCALE: AS SHOWN  
SALEM, OR., 97301 RECEIVED BY SHEET 6 OF 7

Umatilla County Surveyor  
Date 4-10  
Rec'd By KK  
No. 10-55-B

LEGEND	
○	FOUND MONUMENT NOTED IN TABLE
●	SET 5/8" x 30" IRON ROD WITH 1 1/2" ALUMINUM CAP MARKED APA OR2537 WA35140
▲	SET NETWORK POINT
△	FOUND MONUMENT USED AS NETWORK POINT
—	EDGE OF PAVEMENT
—	RIGHT-OF-WAY
—	SECTION LINE
- - -	QUARTER SECTION LINE



A & B  
PINKERTON  
MICROFILM REEL 143  
PAGE 960

RECOVERED MONUMENT LIST

PT. NO.	LDP NORTHING	LDP EASTING	STATION	OFFSET	DESCRIPTION & REFERENCE DOCUMENTS
576	744114.278	8618200.541	217+69.76	36.26 L	2 3/8" BRASS CAP ON 1 1/4" IRON PIPE. PROPERLY MARKED FOR THE EAST 1/4 CORNER SECTION 36

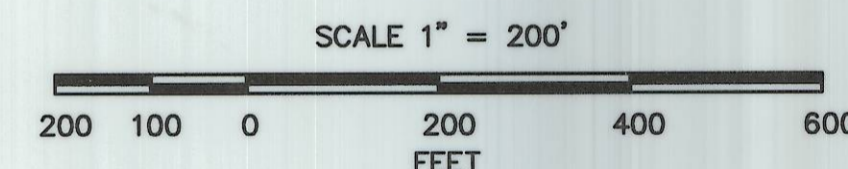
SET MONUMENT LIST

PT. NO.	LDP NORTHING	LDP EASTING	STATION	OFFSET	DESCRIPTION & REFERENCE DOCUMENTS
550	744256.338	8618299.378	218+85.82	153.96' L	1/2" IRON ROD WITH RED PLASTIC CAP INSCRIBED "APA CONTROL"
551	744161.844	8619351.620	229+15.47	43.89' L	1/2" IRON ROD WITH RED PLASTIC CAP INSCRIBED "APA CONTROL"

NOTES:  
2. THIS MONUMENT WAS DESTROYED BY CONSTRUCTION ACTIVITY. IT WAS RESET IN MARCH OF 2010. MONUMENTATION RECORD FILED SEPARATELY AS UMATILLA COUNTY RECORD 10-23-R.

REGISTERED PROFESSIONAL LAND SURVEYOR  
*[Signature]*  
OREGON  
JAN 21, 1982  
WILSON E. McLENDON  
2837  
Renews 12/31/10

ANDERSON-PERRY & ASSOCIATES  
1901 N. FIR ST., LA GRANDE, OR. 97850  
HORIZONTAL CONTROL, RECOVERY AND RETRACEMENT SURVEY  
BARNHART AIRPORT ROAD CONNECTOR  
UMATILLA COUNTY  
CITY OF PENDLETON  
1165 UNION ST. NE STE 200  
SALEM, OR., 97301  
MARCH, 2010  
SCALE: AS SHOWN  
SHEET 7 OF 7



Umatilla County Surveyor  
Date 4-10  
Rec'd by [Signature]  
No. 10-05-B