

1999-42

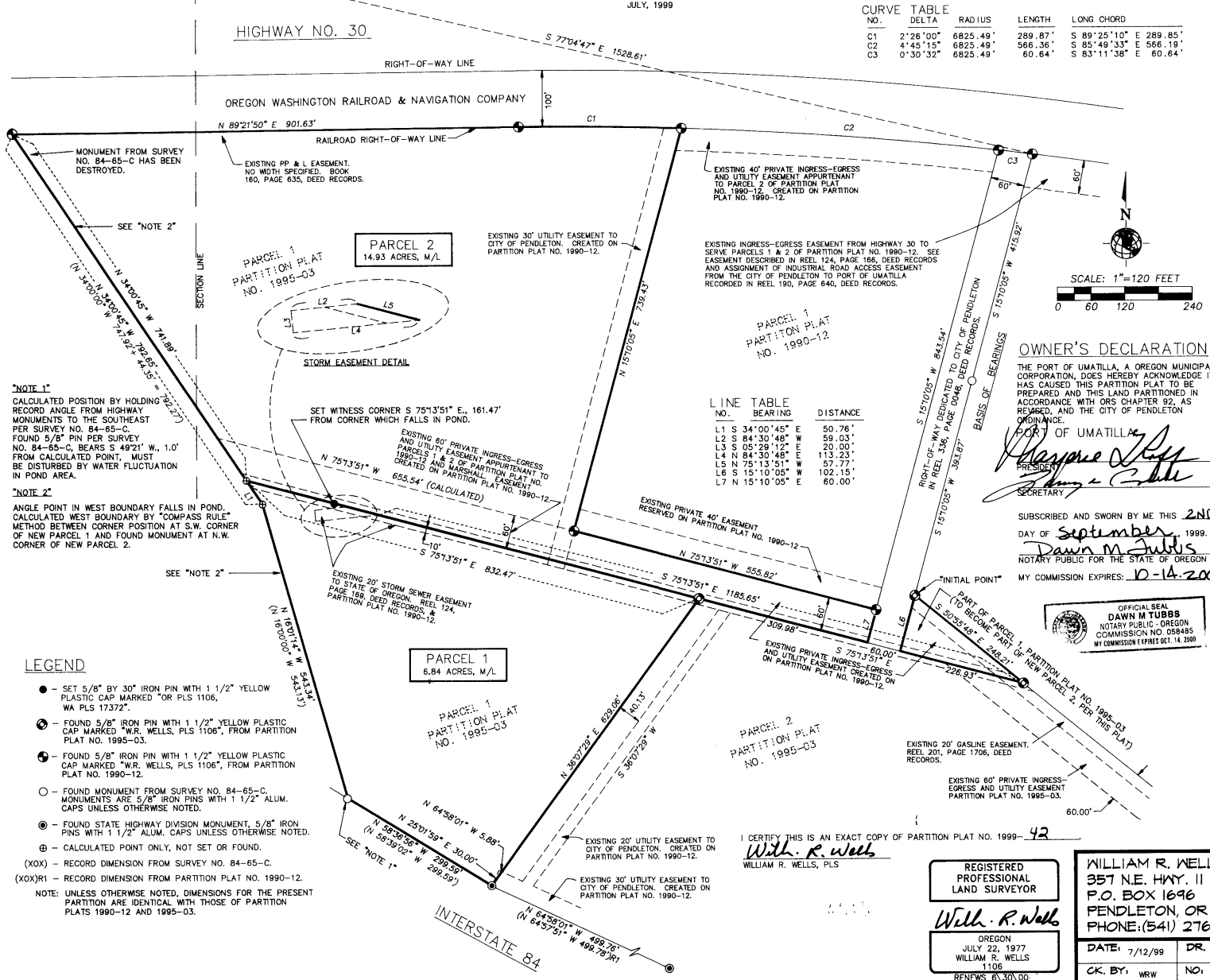
PARTITION PLAT FOR THE CITY OF PENDLETON  
ON LANDS OWNED BY THE PORT OF UMATILLA  
A PARTITION OF A PART OF PARCEL 1 OF PARTITION PLAT NO. 1995-03.  
LOCATED IN THE NW1/4 OF SECTION 9 AND NE1/4 OF SECTION 8,  
T2N., R32E., W.M., UMATILLA COUNTY, OREGON.  
JULY, 1999

PARTITION PLAT NO. 1999-42

APPROVALS

EXAMINED AND APPROVED THIS  
3<sup>rd</sup> DAY OF September 1999.  
LAND PARTITION APPROVAL NO. MP99-06  
CITY OF PENDLETON PLANNING DIRECTOR  
EXAMINED AND APPROVED THIS  
8<sup>th</sup> DAY OF Sept 1999.  
CITY OF PENDLETON SURVEYOR  
EXAMINED AND APPROVED THIS  
3 DAY OF September 1999.  
UMATILLA COUNTY SURVEYOR  
TAXES ARE CURRENT THIS  
8<sup>th</sup> DAY OF Sept 1999.  
UMATILLA COUNTY TAX COLLECTOR  
RECORDING INFORMATION  
UMATILLA COUNTY OFFICE OF COUNTY RECORDS:  
STATE OF OREGON }  
COUNTY OF UMATILLA }  
I certify that this instrument was received and  
recorded  
ON September 8, 1999  
at 2:40 o'clock P.m., in the record of  
PLATS of said County.  
YEAR NUMBER Slide  
1999 42  
OFFICE OF COUNTY RECORDS  
By: GEORGIA DUNAWAY Records Officer  
Fees \$ 25.00 No. 1999-3570729

FD. 3/4" SQUARE ROD  
SET IN CONCRETE.  
REFERENCE:  
PARTITION PLAT NO. 1990-12.



CURVE TABLE

NO.	DELTA	RADIUS	LENGTH	LONG CHORD
C1	2°26'00"	6825.49'	289.87'	S 89°25'10" E 289.85'
C2	4°45'15"	6825.49'	566.36'	S 85°49'33" E 566.19'
C3	0°30'32"	6825.49'	60.64'	S 83°11'38" E 60.64'

EXISTING 40' PRIVATE INGRESS-EGRESS AND UTILITY EASEMENT APPURTINANT TO PARCEL 2 OF PARTITION PLAT NO. 1990-12, CREATED ON PARTITION PLAT NO. 1990-12.

EXISTING 30' UTILITY EASEMENT TO CITY OF PENDLETON, CREATED ON PARTITION PLAT NO. 1990-12.

EXISTING INGRESS-EGRESS EASEMENT FROM HIGHWAY 30 TO SERVE PARCELS 1 & 2 OF PARTITION PLAT NO. 1990-12. SEE EASEMENT DESCRIBED IN REEL 124, PAGE 166, DEED RECORDS AND ASSIGNMENT OF INDUSTRIAL ROAD ACCESS EASEMENT FROM THE CITY OF PENDLETON TO PORT OF UMATILLA RECORDED IN REEL 190, PAGE 640, DEED RECORDS.

LINE TABLE

NO.	BEARING	DISTANCE
L1	S 34°00'45" E	50.76'
L2	S 84°30'48" W	59.03'
L3	S 05°29'12" E	20.00'
L4	N 84°30'48" E	113.23'
L5	N 75°13'51" W	57.77'
L6	S 15°10'05" E	102.15'
L7	N 15°10'05" E	60.00'

NOTE 1:  
CALCULATED POSITION BY HOLDING RECORD ANGLE FROM HIGHWAY MONUMENTS TO THE SOUTHEAST PER SURVEY NO. 84-65-C. FOUND 5/8" PIN PER SURVEY NO. 84-65-C, BEARS S 49°21' W, 1.0' FROM CALCULATED POINT, MUST BE DISTURBED BY WATER FLUCTUATION IN POND AREA.

NOTE 2:  
ANGLE POINT IN WEST FLUCCIARY FALLS IN POND. CALCULATED WEST BOUNDARY BY "COMPASS RULE" METHOD BETWEEN CORNER POSITION AT S.W. CORNER OF NEW PARCEL 1 AND FOUND MONUMENT AT N.W. CORNER OF NEW PARCEL 2.

LEGEND

- - SET 5/8" BY 30" IRON PIN WITH 1 1/2" YELLOW PLASTIC CAP MARKED "OR PLS 1106, WA PLS 17372".
  - ⊙ - FOUND 5/8" IRON PIN WITH 1 1/2" YELLOW PLASTIC CAP MARKED "W.R. WELLS, PLS 1106", FROM PARTITION PLAT NO. 1995-03.
  - ⊙ - FOUND 5/8" IRON PIN WITH 1 1/2" YELLOW PLASTIC CAP MARKED "W.R. WELLS, PLS 1106", FROM PARTITION PLAT NO. 1990-12.
  - - FOUND MONUMENT FROM SURVEY NO. 84-65-C. MONUMENTS ARE 5/8" IRON PINS WITH 1 1/2" ALUM. CAPS UNLESS OTHERWISE NOTED.
  - ⊙ - FOUND STATE HIGHWAY DIVISION MONUMENT, 5/8" IRON PINS WITH 1 1/2" ALUM. CAPS UNLESS OTHERWISE NOTED.
  - ⊙ - CALCULATED POINT ONLY, NOT SET OR FOUND.
  - (XX) - RECORD DIMENSION FROM SURVEY NO. 84-65-C.
  - (XX) - RECORD DIMENSION FROM PARTITION PLAT NO. 1990-12.
- NOTE: UNLESS OTHERWISE NOTED, DIMENSIONS FOR THE PRESENT PARTITION ARE IDENTICAL WITH THOSE OF PARTITION PLATS 1990-12 AND 1995-03.

OWNER'S DECLARATION

THE PORT OF UMATILLA, A OREGON MUNICIPAL CORPORATION, DOES HEREBY ACKNOWLEDGE IT HAS CAUSED THIS PARTITION PLAT TO BE PREPARED AND THIS LAND PARTITIONED IN ACCORDANCE WITH ORS CHAPTER 92, AS REVISED, AND THE CITY OF PENDLETON ORDINANCE.

POR OF UMATILLA  
PRESIDENT  
SECRETARY

SUBSCRIBED AND SWORN BY ME THIS 2ND DAY OF September 1999.  
DAWN M. TUBBS  
NOTARY PUBLIC FOR THE STATE OF OREGON  
MY COMMISSION EXPIRES: 10-14-2000



SURVEYOR'S CERTIFICATE AND NARRATIVE

I HEREBY CERTIFY THAT I HAVE CORRECTLY SHOWN PARCELS 1 AND 2 OF THIS PARTITION PLAT IN ACCORDANCE WITH ORS CHAPTER 92, AS REVISED, AND CITY OF PENDLETON ORDINANCE.

THE BOUNDARIES OF PARCEL 1 AND 2 ARE MONUMENTED AS SHOWN.

THE SURVEY WAS MADE WITH A SOKKIA SET 48 FIVE SECOND TOTAL STATION BY RANDOM AND CLOSED TRAVERSE.

REAL PROPERTY DESCRIPTION  
PARCEL 1 OF PARTITION PLAT 1995-03, LOCATED IN THE NORTHWEST QUARTER OF SECTION 9 AND NORTHEAST QUARTER OF SECTION 8, TOWNSHIP 2 NORTH RANGE 32 EAST, W.M., UMATILLA COUNTY, OREGON.

EXCEPTING THEREFROM, THAT PORTION OF RIGHT-OF-WAY ACROSS PARCEL 1 OF PARTITION PLAT 1995-03, CONTAINED IN DEDICATION DEED TO CITY OF PENDLETON, RECORDED AT REEL 336, PAGE 0048, DEED RECORDS.

I CERTIFY THIS IS AN EXACT COPY OF PARTITION PLAT NO. 1999-42  
WILLIAM R. WELLS, PLS

REGISTERED PROFESSIONAL LAND SURVEYOR

WILLIAM R. WELLS

OREGON  
JULY 22, 1977  
WILLIAM R. WELLS  
1106  
RENEWS 8/30/00

WILLIAM R. WELLS, PLS  
357 N.E. HWY. 11  
P.O. BOX 1696  
PENDLETON, OR 97801  
PHONE: (541) 276-6362

DATE: 7/12/99 DR. BY: DMT  
CK. BY: WRW NO: 99-639

PROJECT:  
PARTITION PLAT FOR:  
CITY OF PENDLETON

LOCATED IN THE NW1/4 OF SECTION 9 & NE 1/4 OF SECTION 8, T2N., R32E., W.M., UMATILLA COUNTY, OREGON.