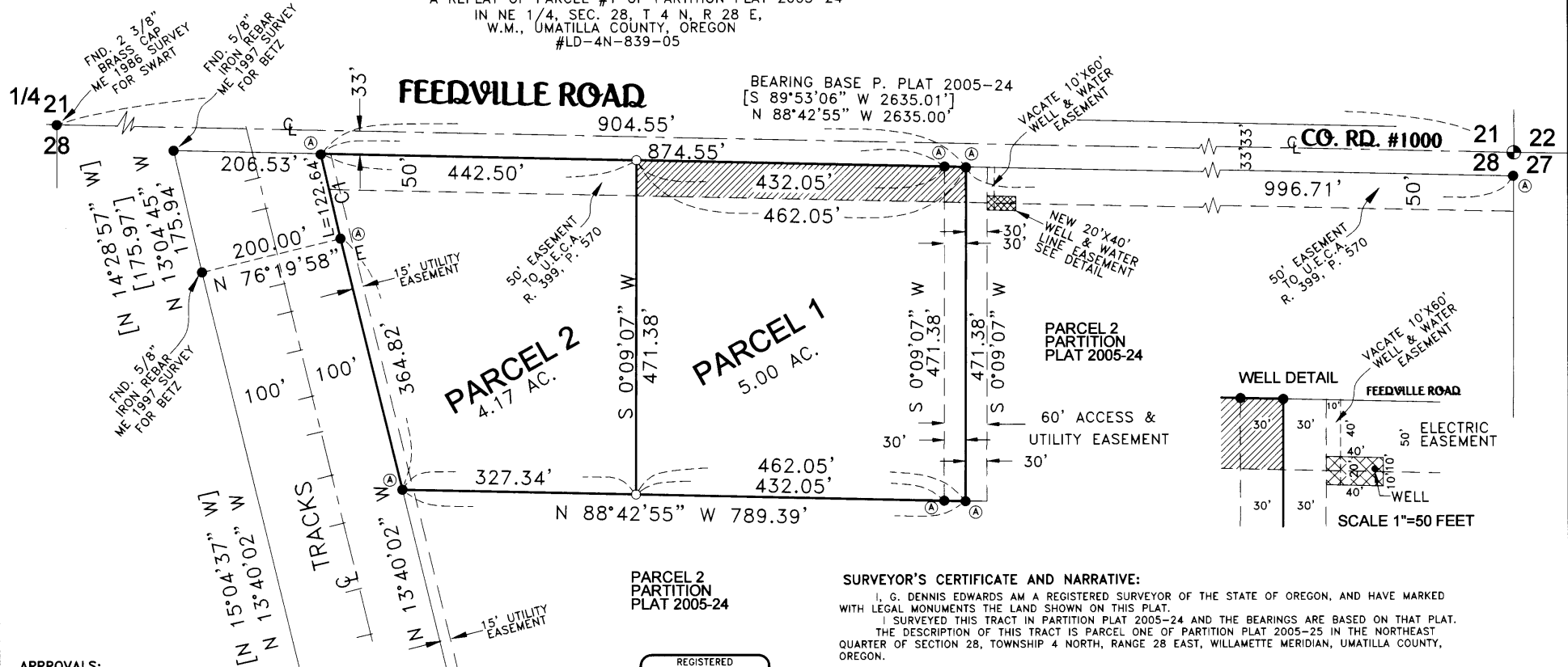


2006-12

PARTITION PLAT 2006-12

A REPLAT OF PARCEL #1 OF PARTITION PLAT 2005-24
IN NE 1/4, SEC. 28, T 4 N, R 28 E,
W.M., UMATILLA COUNTY, OREGON
#LD-4N-839-05



APPROVALS:

UMATILLA COUNTY SURVEYOR:

APPROVED THIS 1 DAY OF Feb 2006.

G. Dennis Edwards
UMATILLA COUNTY SURVEYOR

UMATILLA COUNTY PLANNING DEPARTMENT

APPROVED THIS 24th DAY OF May 2006.

Jeff Mallott
DIRECTOR

UMATILLA COUNTY TAX COLLECTOR:

TAXES ARE PAID IN FULL.

APPROVED THIS 1 DAY OF Feb 2006.

Randy DeWalt by Dan Small Deputy
TAX COLLECTOR

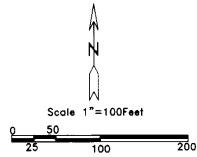
PARCEL 2
PARTITION
PLAT 2005-24

REGISTERED
PROFESSIONAL
LAND SURVEYOR

G. Dennis Edwards

OREGON

JULY 16, 1971
G. DENNIS EDWARDS
9 8 1
RENEWS 12/31/2007



THIS IS AN EXACT COPY:

LEGEND:

- MONUMENTS FOUND AS NOTED OR (A) 5/8" IRON REBAR FROM PARTITION PLAT 2005-24
- FOUND 2 3/8" BRASS CAP, ME 1992 CO. MON. SURVEY
- SET 5/8"x30" IRON REBAR WITH PLASTIC CAP #951
- ▨ 50' ACCESS & UTILITY EASEMENT OVER U.E.C.A. EASEMENT
- [0000] OF RECORD, WELLS 1993 SURVEY 93-28-C
- (000) OF RECORD, PARTITION PLAT 1997-14 & 2004-22

SURVEYOR'S CERTIFICATE AND NARRATIVE:

I, G. DENNIS EDWARDS AM A REGISTERED SURVEYOR OF THE STATE OF OREGON, AND HAVE MARKED WITH LEGAL MONUMENTS THE LAND SHOWN ON THIS PLAT.
I SURVEYED THIS TRACT IN PARTITION PLAT 2005-24 AND THE BEARINGS ARE BASED ON THAT PLAT. THE DESCRIPTION OF THIS TRACT IS PARCEL ONE OF PARTITION PLAT 2005-25 IN THE NORTHEAST QUARTER OF SECTION 28, TOWNSHIP 4 NORTH, RANGE 28 EAST, WILLAMETTE MERIDIAN, UMATILLA COUNTY, OREGON.

OWNER'S DECLARATION & DEDICATION:

WE, THE OWNER'S OF THE LAND DESCRIBED ABOVE, HEREBY DECLARE THAT WE HAVE CAUSED THIS PLAT TO BE PREPARED.
WE ACKNOWLEDGE THE EASEMENTS AS SHOWN ON PARTITION PLAT 2005-24.
WE HEREBY DEDICATE A 50 FOOT EASEMENT FOR INGRESS AND EGRESS AND UTILITIES OVER THE NORTH 50 FEET OF PARCEL 1 FOR THE USE OF BOTH PARCELS. SAID 50 FOOT STRIP IS ALSO AN EASEMENT TO UMATILLA ELECTRIC COOP. RECORDED ON REEL 399, PAGE 570.
WE ARE THE OWNERS OF PARCEL 2 OF PARTITION PLAT 2005-24 AND HEREBY DEDICATE A 20 FOOT BY 40 FOOT WELL AND WATER LINE EASEMENT WHICH CONTAINS A WELL.
WE HEREBY VACATE THE 10 FOOT BY 60 WELL AND WATER EASEMENT WHICH IS OF NO USE.

Troy K. Betz
TROY K. BETZ
MEMBER, JB LAND, LLC
COUNTY OF OREGON,
COUNTY OF UMATILLA
I certify that this instrument was received and recorded
ON May 24, 2006
at 12:00 o'clock P.m., in the record of
PLATS of said County.
YEAR NUMBER Slide
2006 12

STATE OF OREGON }
COUNTY OF UMATILLA }
SUBSCRIBED, AND SWORN BEFORE ME ON THIS 1st DAY OF February, 2006
Barbara L. Dames
NOTARY PUBLIC FOR OREGON
Barbara L. Dames
COMMISSION NO. 396772
MY COMMISSION EXPIRES Oct 11, 2009



OFFICE OF COUNTY RECORDS
By: JEAN HEMPHILL, Records Officer

Fees \$ 50.00 No. 2006-5010259

RECEIVED BY: Umatilla County Surveyor

Date 5-06
Rec'd by JK
No. 06-375-B

JOB# S0502031A
EDWARDS SURVEYING P.O. BOX 763
541-567-3336 HERMISTON, OREGON 97838
DRAWN BY NJF/JMC

CURVE TABLE				
#	RADIUS	ARC	DELTA	CHORD
C1	5629.58'	122.64'	1°14'54"	N 13°02'36" W 122.64'