

NOTES AND EASEMENTS

- ① - EXISTING 30' ROADWAY EASEMENT, CREATED ON UMATILLA COUNTY PARTITION PLAT 2006-26. THIS PLAT DEDICATES THIS EASEMENT AREA AS A PUBLIC RIGHT-OF-WAY.
- ② - EXISTING 10' CABLE T.V. EASEMENT RECORDED AT REEL 165, PAGE 1705, UMATILLA COUNTY MICROFILM RECORDS.
- ③ - EXISTING 10' IRRIGATION LINE EASEMENT, CREATED ON PARTITION PLAT NO. 2003-04.

ALSO RESERVATIONS, INCLUDING THE TERMS AND PROVISIONS THEREOF, CONTAINED IN U.S. PATENT, RECORDED AUGUST 25, 1971, IN BOOK 314, PAGE 605, UMATILLA COUNTY DEED RECORDS. THE RESERVATIONS INCLUDE RIGHT-OF-WAYS FOR DITCHES AND CANALS CONSTRUCTED UNDER THE AUTHORITY OF THE UNITED STATES AND RESERVATION OF ALL OIL AND GAS, AND THE RIGHT TO PROSPECT, MINE AND REMOVE THE SAME. SEE BOOK 314, PAGE 605 FOR SPECIFIC LANGUAGE.

AN IRREVOCABLE CONSENT AGREEMENT DOCUMENT APPLYING TO LANDS WITHIN THIS PARTITION PLAT IS RECORDED AS INSTRUMENT NO. 2012-599049 UMATILLA COUNTY OFFICE OF RECORDS.

A WAIVER OF REMONSTRANCE DOCUMENT APPLYING TO LANDS WITHIN THIS PARTITION PLAT IS RECORDED AS INSTRUMENT NO. 2012-5990258, UMATILLA COUNTY OFFICE OF RECORDS.

A PARTITION OF PARCEL 2 OF UMATILLA COUNTY PARTITION PLAT 2006-26 LOCATED IN THE SOUTHWEST QUARTER OF SECTION 20, TOWNSHIP 5 NORTH, RANGE 28 EAST, W.M., CITY OF UMATILLA, UMATILLA COUNTY, OREGON. DECEMBER, 2012

PARTITION PLAT 2012-24

WATER RIGHTS STATEMENT
THE PARTITIONED PROPERTY DOES NOT HAVE STATE WATER RESOURCES WATER RIGHTS EXCEPT AS PROVIDED THROUGH THE CITY OF UMATILLA FOR MUNICIPAL USE. THE PARTITIONED PROPERTY IS NOT IN AN IRRIGATION DISTRICT.

LEGEND

- - SET 5/8" BY 30" IRON REBAR WITH 1 1/4" RED PLASTIC CAP MARKED "OR PLS 1106, WA PLS 17372".
- - FOUND 5/8" REBAR FROM UMATILLA COUNTY PARTITION WITH YELLOW PLASTIC CAP FROM PARTITION PLAT NO. 2006-26 OR 2003-04.
- ⊙ - OTHER MONUMENT FOUND AS NOTED.
- (XOX) - RECORD DIMENSION FROM UMATILLA COUNTY PARTITION PLAT NO. 2006-26.

OWNERS DECLARATION

C.C.P.D. INC., AN OREGON CORPORATION, AS OWNER, DOES HEREBY ACKNOWLEDGE THAT IT HAS CAUSED THIS PARTITION PLAT TO BE PREPARED AND THIS LAND PARTITIONED IN ACCORDANCE WITH ORS CHAPTER 92, AS REVISED, AND THE CITY OF UMATILLA AND UMATILLA COUNTY DEVELOPMENT ORDINANCES.

C.C.P.D. INC. HEREBY DEDICATES THE 30.00 FOOT STRIP OF LAND SOUTH OF NEW PARCEL 1 FOR PUBLIC USE.

C.C.P.D. INC., AN OREGON CORPORATION, BY:
Ted C. Carner
TED C. CARNER, PRESIDENT

ACKNOWLEDGMENT

STATE OF OREGON) SS
COUNTY OF UMATILLA)

THIS INSTRUMENT WAS ACKNOWLEDGED BEFORE ME ON

THIS 12 DAY OF December 2012.
BY TED C. CARNER.

Dawn M. Judd
NOTARY PUBLIC FOR THE STATE OF OREGON

MY COMMISSION EXPIRES: 10-14-16

MY COMMISSION NUMBER: 471536

APPROVALS

CITY OF UMATILLA

EXAMINED AND APPROVED THIS
12th DAY OF December 2012.

Bill Seaver
CITY OF UMATILLA PLANNER

THE CITY OF UMATILLA DOES HEREBY ACCEPT THE NEW 30.00 FOOT RIGHT-OF-WAY DEDICATED ON THIS PLAT FOR PUBLIC USE.

DATED THIS 12 DAY OF December 2012.

Paul Lafferty
MAYOR, CITY OF UMATILLA

UMATILLA COUNTY

EXAMINED AND APPROVED THIS

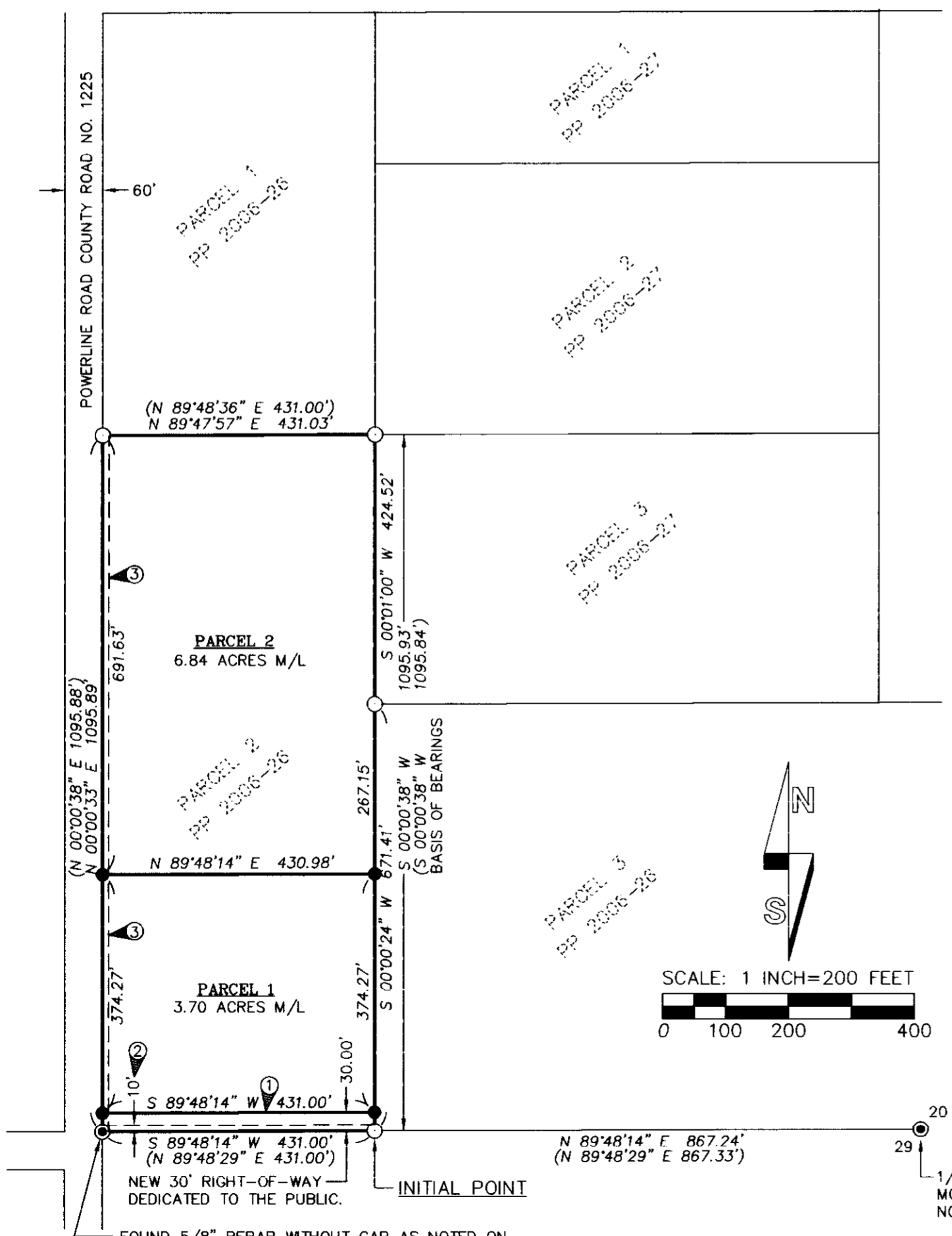
12th DAY OF December 2012.

Jay R. Felt, Deputy
UMATILLA COUNTY SURVEYOR

TAXES ARE PAID IN FULL THIS

12 DAY OF November 2012.

Bettina Amelt
UMATILLA COUNTY TAX COLLECTOR



FOUND 5/8" REBAR WITHOUT CAP AS NOTED ON PARTITION PLAT NO. 2006-06. REBAR IS LOCATED N 71°46' W, 0.30' FROM CORNER POINT. SET 5/8" BY 30" REBAR WITH 1 1/4" RED PLASTIC CAP AT CORNER POINT.

SURVEYORS CERTIFICATE & NARRATIVE

THIS SURVEY FOR PARTITION WAS MADE AT THE REQUEST OF TED CARNER. THE SURVEY WAS MADE WITH A TRIMBLE R8 GEODETIC GPS UNIT CONNECTED TO THE OREGON REAL TIME NETWORK. CONTROL MONUMENTS TIED AND THOSE SET WERE VERIFIED BY REDUNDANT OBSERVATIONS. I FOUND THE MONUMENTS SHOWN FOR PARCEL 2 OF PARTITION PLAT NO. 2006-26 AND HELD ALL OF THEM EXCEPT THE 5/8 INCH OUT OF PLACE REBAR ON THE SECTION LINE SOUTH OF THE SOUTHWEST CORNER OF PROPOSED PARCEL 1. I SET A NEW MONUMENT FOR THIS CORNER.

I HEREBY CERTIFY THAT I HAVE CORRECTLY SURVEYED, SHOWN AND MONUMENTED THE BOUNDARIES OF PARCELS 1 AND 2 WITH PROPER MONUMENTS IN ACCORDANCE WITH CHAPTER 92, AS REVISED.

REAL PROPERTY DESCRIPTION

PARCEL 2 OF UMATILLA COUNTY PARTITION PLAT 2006-26, RECORDED OCTOBER 9, 2006 IN THE RECORD OF PLATS OF UMATILLA COUNTY AS INSTRUMENT NO. 2006-5090091, UMATILLA COUNTY OFFICE OF RECORDS.

William R. Wells
WILLIAM R. WELLS, PLS

REGISTERED PROFESSIONAL LAND SURVEYOR

William R. Wells
OREGON
JULY 22, 1977
WILLIAM R. WELLS
1106
RENEWS 6/30/14

RECEIVED BY
Umatilla County Surveyor
Date: 12-18-2012
Rec'd By: *S. Rea*
No.: 12-159-B

RECORDING INFORMATION, UMATILLA COUNTY OFFICE OF RECORDS:

STATE OF OREGON, COUNTY OF UMATILLA }
I certify that this instrument was received and recorded
ON December 12, 2012
at 2:30 o'clock P.m., in the record of PLATS of said County.
YEAR NUMBER Slide
2012 24

OFFICE OF COUNTY RECORDS
By: JEAN HEMPHILL, Records Officer
Fees \$ 73.00 No. 2012-5990468

WELLS SURVEYING
1 SW NYE AVENUE, SUITE B
P.O. BOX 1696
PENDLETON, OR 97801
PHONE: (541) 276-6362

PROJECT: \CARNERTPP2012
PARTITION PLAT FOR:
C.C.P.D., INC.

DATE: 10/12 DR. BY: DMT
CK. BY: WRW NO: 12-1407

LOCATED IN THE SOUTHWEST QUARTER OF SECTION 20, TOWNSHIP 5 NORTH, RANGE 28 EAST, W.M., CITY OF UMATILLA, UMATILLA COUNTY, OREGON.

I CERTIFY THIS IS AN EXACT COPY OF UMATILLA COUNTY PARTITION PLAT 2012-24

William R. Wells
WILLIAM R. WELLS, PLS