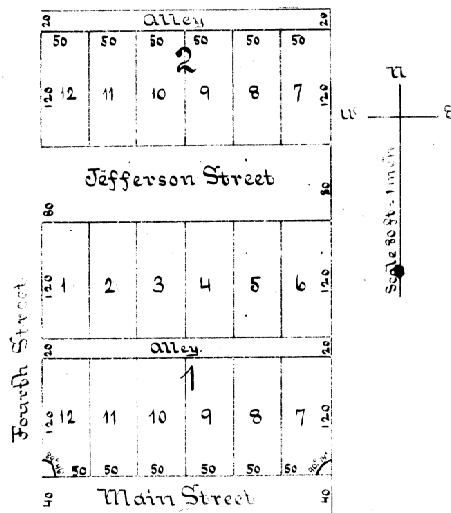


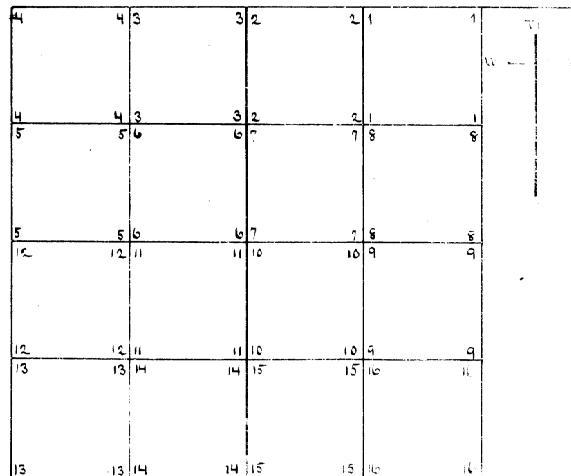
Andleton, Or Dec 10th 1887
I hereby certify the following plat, correctly represents the survey
of *links* Addition to the town of Anterville, Umatilla County
Oregon, as made by me, July 20th + 21st A.D. 1887.
Jno. P. Arnold, Surveyor.

Plat of *links* Addition to Anterville
Umatilla County Oregon



Filed Dec 12th 1887, at 2 P.M.
G. A. Hartman
Clerk.

I hereby certify the following to be a correct plat of the subdivision survey
of the North West quarter of Section Four, Township Five North of Range thirty
seven East of Umatilla Meridian, as made by me.
G. W. Winkler
Surveyor.



Filed Sept 23rd 1887, at 5 P.M.
G. A. Hartman
Clerk.