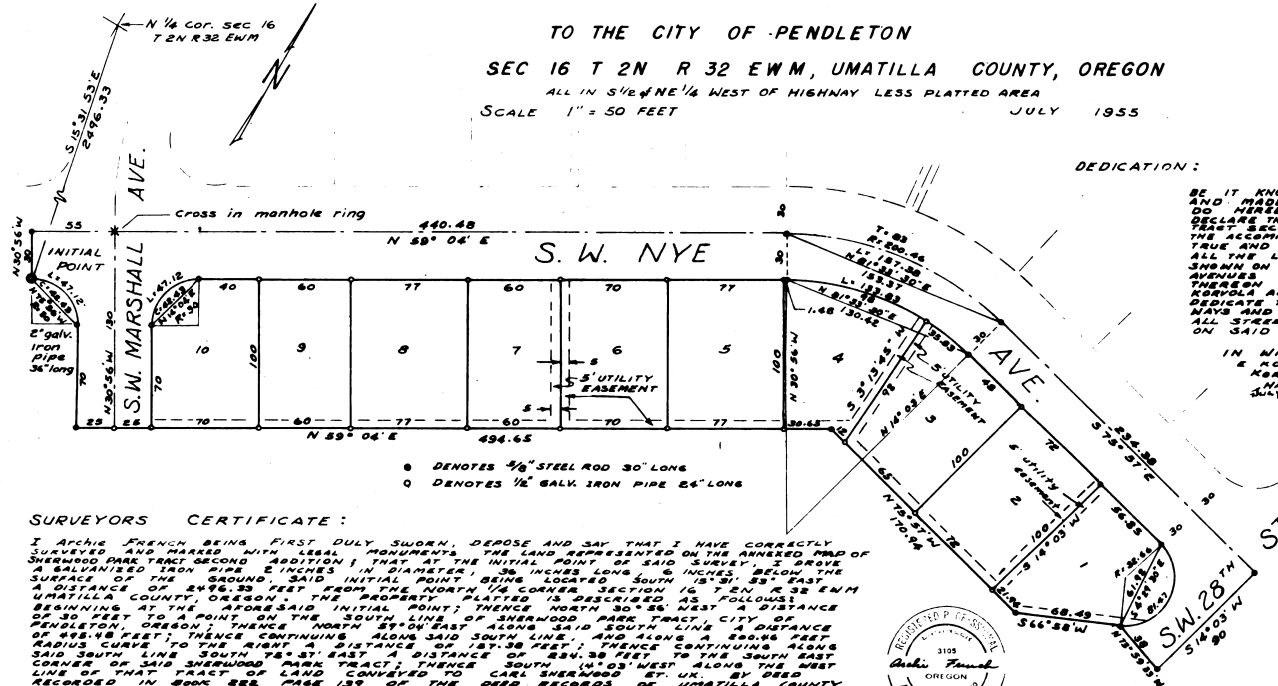


SHERWOOD PARK TRACT SECOND ADDITION

TO THE CITY OF PENDELTON
SEC 16 T 2N R 32 EWM, UMATILLA COUNTY, OREGON
ALL IN S 1/2 NE 1/4 WEST OF HIGHWAY LESS PLATTED AREA
SCALE 1" = 50 FEET JULY 1955



I certify that this is a true and accurate copy of the Plat of Sherwood Park Tract Second Addition.

Archie French
City Engineer

DEDICATION:

BE IT KNOWN THAT JOHN E. KORVOLA AND MADELINE E. KORVOLA HIS WIFE DO HEREBY MAKE ESTABLISH AND DECLARE THE ANNEXED MAP OF SHERWOOD PARK TRACT SECOND ADDITION DESCRIBED IN THE ACCOMPANYING SURVEYORS CERTIFICATE, A TRUE AND CORRECT MAP AND PLAT THEREOF, ALL THE LOTS BEING OF THE DIMENSIONS SHOWN ON SAID MAP AND ALL STREETS, EASEMENTS AND EASEMENTS OF THE WIDTHS THEREON SET FORTH AND SAID JOHN E. KORVOLA AND MADELINE E. KORVOLA DO HEREBY DEDICATE TO THE USE OF THE PUBLIC AS PUBLIC WAYS AND PUBLIC UTILITY EASEMENTS PERMANENT ALL STREETS DRIVES AND EASEMENTS SHOWN ON SAID MAP.

IN WITNESS WHEREOF: SAID JOHN E. KORVOLA AND MADELINE E. KORVOLA HAVE HEREUNTO SET THEIR HAND AND SEAL THIS 11TH DAY OF JULY 1955

John E. Korvola
Madelaine E. Korvola
EXECUTED IN THE PRESENCE OF US AS WITNESSES

SURVEYORS CERTIFICATE:

I Archie French being first duly sworn, depose and say that I have correctly surveyed and marked with legal monuments the land represented on the annexed map of SHERWOOD PARK TRACT SECOND ADDITION; THAT AT THE INITIAL POINT OF SAID SURVEY, I SET A GALVANIZED IRON PIPE 2 INCHES IN DIAMETER 36 INCHES LONG 6 INCHES BELOW THE SURFACE OF THE GROUND, SAID INITIAL POINT BEING LOCATED SOUTH 15° 35' EAST A DISTANCE OF 2496.33 FEET FROM THE NORTH 1/4 CORNER SECTION 16 T 2N R 32 EWM IN PENDELTON COUNTY, OREGON; THE PROPERTY PLATTED IS DESCRIBED AS FOLLOWS: BEGINNING AT THE AFORESAID INITIAL POINT; THENCE NORTH 30° 38' WEST A DISTANCE OF 30 FEET TO A POINT ON THE SOUTH LINE OF SHERWOOD PARK TRACT CITY OF PENDELTON, OREGON; THENCE NORTH 81° 04' EAST ALONG SAID SOUTH LINE A DISTANCE OF 68.48 FEET; THENCE CONTINUING ALONG SAID SOUTH LINE, AND ALONG A 600.66 FEET RADIUS CURVE TO THE RIGHT A DISTANCE OF 187.38 FEET; THENCE CONTINUING ALONG SAID SOUTH LINE SOUTH 74° 57' EAST A DISTANCE OF 884.38 FEET TO THE SOUTH EAST CORNER OF SAID SHERWOOD PARK TRACT; THENCE SOUTH 14° 03' WEST ALONG THE WEST LINE OF THAT TRACT OF LAND CONVEYED TO CARL SHERWOOD ET AL BY DEED RECORDED IN BOOK 222 PAGE 127 OF THE DEED RECORDS OF UMATILLA COUNTY OREGON; A DISTANCE OF 90 FEET; THENCE NORTH 25° 35' WEST A DISTANCE OF 38 FEET; THENCE SOUTH 66° 58' WEST A DISTANCE OF 68.52 FEET; THENCE NORTH 75° 27' WEST A DISTANCE OF 170.94 FEET; THENCE SOUTH 89° 04' WEST A DISTANCE OF 484.65 FEET; THENCE NORTH 30° 38' WEST A DISTANCE OF 70 FEET; THENCE ALONG A 30 FEET RADIUS CURVE TO THE LEFT A DISTANCE OF 47.12 FEET TO THE POINT OF BEGINNING.

Archie French



APPROVED 7-11, 1955

Archie French
CITY ENGINEER

IN TESTIMONY WHEREOF: I HAVE HEREUNTO SET MY HAND AND AFFIXED MY OFFICIAL SEAL THIS DAY AND YEAR FIRST ABOVE WRITTEN

Notary Public in and for the State of Oregon
BY COMMISSION EXPIRES 7-11-1955

APPROVED AUG 23, 1955
J. B. Boyer
COUNTY SURVEYOR

DESCRIBED AND SWORN TO BEFORE ME THIS 23RD DAY OF JULY 1955

Notary Public for Oregon
BY COMMISSION EXPIRES 7-11-1955

CITY PLANNING COMMISSION:

Chairman
Secretary

APPROVED AUG 23, 1955
James M. Bell
COUNTY CLERK

UMATILLA COUNTY COURT:

Commissioner
Commissioner
Commissioner

APPROVED AUG 23, 1955
County Assessor

1955 TAX IS A LIEN BUT NOT PAYABLE
ALL TAXES FROM 7/1/1954 TO 7/1/1955 ARE PAID

Ray Johnson
Sheriff Umatilla County
By Vera Hopkins Deputy

STATE OF OREGON
County of Umatilla
This instrument was filed for record on
AUG 29 1955

11:00 o'clock A.M. and duly recorded
as Vol. 8 of Town Plat
Page 17
Jack Nelson
Recorder of Conveyances

By: 6.00 No. 1000



KNOW ALL MEN BY THESE PRESENTS: THAT THE UNDERSIGNED EACH AS THE HOLDER OF AN EASEMENT COVENANT OR A PORTION OF THE LOTS AND WAYS INCLUDED WITHIN THE AREA PLATTED BY THE ACCOMPANYING MAP AND DO HEREBY JOIN IN AND CONSENT TO SUCH DEDICATION AND TO THE FILING OF SAID PLAT INsofar as THEIR RESPECTIVE INTERESTS ARE CONCERNED AND SAID CONSENT IS GIVEN UPON THE EXPRESS CONDITION THAT THE UNDERSIGNED ASSUME NO RESPONSIBILITY FOR THE ACCURACY, FORM OR LEGALITY OF SUCH PLAT OR DEDICATION, THIS CONSENT IS WITHOUT PREJUDICE TO EXISTING EASEMENTS.

THE PACIFIC TELEPHONE AND TELEGRAPH COMPANY A CORPORATION
BY: M.M.M.
DIST. TCA.

THE PACIFIC POWER AND LIGHT COMPANY A CORPORATION
BY: J. W. Cooper
DIST. P&L