

# SUNNYVALE HEIGHTS SUBDIVISION

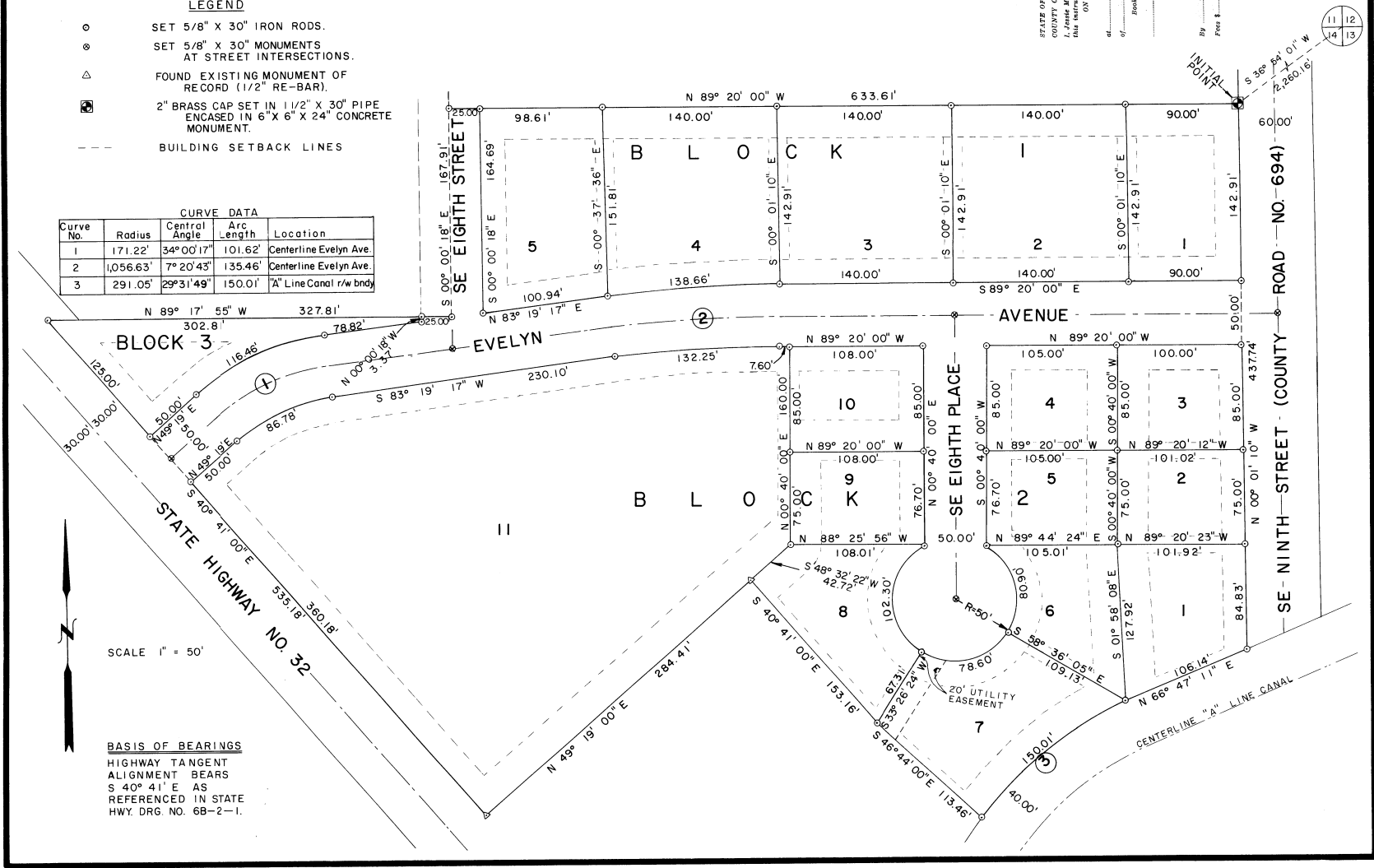
A PLANNED UNIT DEVELOPMENT TO THE CITY OF HERMISTON, UMATILLA COUNTY, OREGON.

STATE OF OREGON,  
 COUNTY OF UMATILLA,  
 I, Jesse M. Bell, County Clerk, certify that  
 this instrument was received and recorded  
 on \_\_\_\_\_ at \_\_\_\_\_ o'clock \_\_\_\_\_ M. in the record  
 of \_\_\_\_\_ of said County in  
 Book \_\_\_\_\_ Page \_\_\_\_\_  
 By \_\_\_\_\_ Deputy  
 Jesse M. Bell  
 County Clerk

- LEGEND**
- SET 5/8" X 30" IRON RODS.
  - ⊙ SET 5/8" X 30" MONUMENTS AT STREET INTERSECTIONS.
  - △ FOUND EXISTING MONUMENT OF RECORD (1/2" RE-BAR).
  - ⊕ 2" BRASS CAP SET IN 1 1/2" X 30" PIPE ENCASED IN 6" X 6" X 24" CONCRETE MONUMENT.
  - - - BUILDING SETBACK LINES

**CURVE DATA**

Curve No.	Radius	Central Angle	Arc Length	Location
1	171.22'	34° 00' 17"	101.62'	Centerline Evelyn Ave.
2	1,056.63'	7° 20' 43"	135.46'	Centerline Evelyn Ave.
3	291.05'	29° 31' 49"	150.01'	"A" Line Canal r/w bndy



11	12
14	13

**BASIS OF BEARINGS**  
 HIGHWAY TANGENT  
 ALIGNMENT BEARS  
 S 40° 41' E AS  
 REFERENCED IN STATE  
 HWY. DRG. NO. 6B-2-1.

DEDICATION

BE IT HEREBY KNOWN BY THESE PRESENTS THAT THE UNDERSIGNED PARTIES DO HEREBY ESTABLISH AND ACKNOWLEDGE THE ACCOMPANYING PLAT AS THE OFFICIAL MAP AND PLAT OF SUNNYVALE HEIGHTS SUBDIVISION TO THE CITY OF HERMISTON, UMATILLA COUNTY, OREGON AND THAT THE UNDERSIGNED OWNERS OF THE LAND ON ACCOMPANYING PLAT DO HEREBY DEDICATE TO THE USE OF THE PUBLIC FOREVER THE STREETS AND AVENUES DESIGNATED ON SAID PLAT TOGETHER WITH A 5.00 FOOT UTILITY EASEMENT ADJACENT TO SAID STREET AND AVENUE RIGHTS OF WAY.

*Carl C. Peterson*  
CARL C. PETERSON

*Mildred M. Peterson*  
MILDRED M. PETERSON

*Edwin E. Sheets*  
EDWIN E. SHEETS

*Minnie K. Sheets*  
MINNIE K. SHEETS



STATE OF OREGON) SS  
COUNTY OF BAKER) ON THIS 12<sup>th</sup> DAY OF April, 1976, APPEARED PERSONALLY CARL C. PETERSON AND MILDRED M. PETERSON, HUSBAND AND WIFE, WHO ARE KNOWN TO ME TO BE THE IDENTICAL INDIVIDUALS WHO EXECUTED THE PLAT DEDICATION AND ACKNOWLEDGED TO ME THAT THEY EXECUTED THE SAME FREELY AND VOLUNTARILY.

*Notary Public for Oregon*  
MY COMMISSION EXPIRES 12/31/76



STATE OF OREGON) SS  
COUNTY OF UMATILLA) ON THIS 12<sup>th</sup> DAY OF April, 1976, APPEARED PERSONALLY EDWIN E. SHEETS AND MINNIE K. SHEETS, HUSBAND AND WIFE, WHO ARE KNOWN TO ME TO BE THE IDENTICAL INDIVIDUALS WHO EXECUTED THE PLAT DEDICATION AND ACKNOWLEDGED TO ME THAT THEY EXECUTED THE SAME FREELY AND VOLUNTARILY.

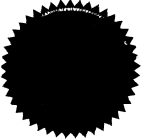
*Notary Public for Oregon*  
MY COMMISSION EXPIRES 12/31/76

ENGINEERS CERTIFICATE

I, THOMAS F. LAGIER, BEING FIRST DULY SWORN, DO DEPOSE AND SAY THAT I AM A DULY REGISTERED ENGINEER OF THE STATE OF OREGON, AND THAT I HAVE CORRECTLY SURVEYED AND MARKED WITH LEGAL MONUMENTS THE LAND REPRESENTED ON THE ABOVE PLAT: COMMENCING AT THE NORTHEAST CORNER OF THE SW1/4 OF THE NE1/4 OF SECTION 14, T4N, R28E. WM.; THENCE S 00° 01' 10" E ALONG THE EAST BOUNDARY OF SAID SW1/4 OF NE1/4, 495.00 FEET; THENCE N 89° 20' 00" W PARALLEL TO THE NORTH BOUNDARY OF SAID SW1/4 OF NE1/4, 30.00 FEET TO THE INITIAL POINT, SAID POINT BEING LOCATED S 36° 54' 01" W, 2,260.16 FEET FROM THE NORTHEAST CORNER OF SAID SECTION 14; THENCE N 89° 20' 00" W, 633.61 FEET; THENCE S 00° 00' 18" E, 167.91 FEET; THENCE N 89° 17' 55" W, 327.81 FEET; THENCE S 40° 41' 00" E, 535.18 FEET; THENCE N 49° 19' 00" E, 284.41 FEET; THENCE S 40° 41' 00" E, 153.16 FEET; THENCE S 46° 44' 00" E, 113.46 FEET; THENCE ON A 291.05 FOOT RADIUS CURVE TO THE RIGHT AN ARC DISTANCE OF 150.01 FEET TO A TANGENT POINT AT WHICH THE LONG CHORD BEARS N 52° 01' 16" E, 148.35 FEET; THENCE N 66° 47' 11" E, 106.14 FEET; THENCE N 00° 01' 10" W, 437.74 FEET TO THE INITIAL POINT.



*Thomas F. Lagier*  
THOMAS F. LAGIER, PROFESSIONAL ENGINEER



SUBSCRIBED AND SWORN BEFORE ME THIS 12<sup>th</sup> DAY OF April, 1976.

*Notary Public for Oregon*  
MY COMMISSION EXPIRES 12/31/76

UMATILLA COUNTY COMMISSION

THIS IS TO CERTIFY THAT THE ACCOMPANYING PLAT IS APPROVED FOR FILING AND PLACED IN THE RECORD OF TOWN PLATS OF UMATILLA COUNTY, OREGON, BY THE UNDERSIGNED BY ITS ORDER DATED THE 14<sup>th</sup> DAY OF April, 1976, AND RECORDED IN THE COUNTY JOURNAL \_\_\_\_\_, PAGE \_\_\_\_\_.

*Frank K. Smith*  
FRANK K. SMITH, CHAIRMAN

*Commissioner*  
COMMISSIONER

*Commissioner*  
COMMISSIONER

UMATILLA COUNTY CLERK

ATTEST: JESSE W. BELL, COUNTY CLERK OF UMATILLA COUNTY, OREGON, DO HEREBY CERTIFY THAT THE ABOVE NAMED WERE ON THE DATE OF SAID ORDER ABOVE SPECIFIED AND ARE NOW THE DULY QUALIFIED, ELECTED, SWORN AND ACTING CHAIRMAN AND COMMISSIONERS OF SAID COUNTY; THAT THE SIGNATURES ARE THE GENUINE SIGNATURES THEREOF AND THE SEAL HERETO AFFIXED IS THE SEAL OF MY OFFICE.



*Jesse W. Bell*  
JESSE W. BELL  
COUNTY CLERK

APPROVALS

CITY OF HERMISTON PLANNING COMMISSION  
THE ACCOMPANYING PLAT IS HEREBY APPROVED BY RESOLUTION AND ADOPTED ON THIS 14<sup>th</sup> DAY OF April, 1976 AND APPROVAL DULY FILED.

*Chairman*  
CHAIRMAN

*Secretary*  
SECRETARY

HERMISTON CITY COUNCIL  
THE ACCOMPANYING PLAT IS HEREBY APPROVED BY RESOLUTION AND ADOPTED ON THIS 26<sup>th</sup> DAY OF April, 1976 AND APPROVAL DULY FILED.

*L.P. Gray*  
L. P. GRAY  
MAYOR

HERMISTON IRRIGATION DISTRICT  
THE ACCOMPANYING PLAT IS HEREBY APPROVED BY RESOLUTION AND ADOPTED ON THIS 9<sup>th</sup> DAY OF June, 1976 AND APPROVAL DULY FILED.

*Chairman*  
CHAIRMAN

CITY ENGINEER  
APPROVED THIS 12<sup>th</sup> DAY OF MAY, 1976. *Patrick D. Neelands, P.E.*  
PATRICK D. NEELANDS, P.E.  
CITY ENGINEER

UMATILLA COUNTY ASSESSOR AND TAX COLLECTOR

I, RODNEY W. ESSELSTYN AND I, D. L. BRATT, RESPECTIVELY ASSESSOR AND TAX COLLECTOR OF UMATILLA COUNTY, OREGON, EACH HEREBY CERTIFY THAT WE HAVE EXAMINED THE TAX RECORDS RELATIVE TO THE LAND COVERED BY THE ACCOMPANYING PLAT, AND THAT ALL MONIES DUE FOR STATE AND COUNTY TAXES AND ASSESSMENTS THAT COULD NOW CONSTITUTE A LIEN ON SAID LAND HAVE BEEN PAID AND WE HEREBY APPROVE SAID PLAT, DATED THIS 12<sup>th</sup> DAY OF April, 1976.

*County Assessor*  
COUNTY ASSESSOR

*County Tax Collector*  
COUNTY TAX COLLECTOR