

LINDA ESTATES II SUBDIVISION

TO THE CITY OF HERMISTON, UMATILLA COUNTY, OREGON

STATE OF OREGON,
COUNTY OF UMATILLA,
I, J. Dean Fouquette, Sr., County Clerk,
certify that this instrument
was recorded
ON AUGUST 23, 1978
at 9:30 o'clock
of UMATILLA COUNTY in
Book 12
Page 14
By J. DEAN FOUQUETTE, SR.,
County Clerk
By Betty Jo Browning,
Deputy
Fees \$ 25.00 No. 5950

BASIS OF BEARING
The common boundary between Linda Estates Subdivision and LINDA ESTATES II SUBDIVISION bears S 89° 55' 00" E., as determined from Laird and Bergs Additions.

LEGEND

- () Subdivision boundary dimension
- Building lot line.
- Set 5/8" X 30" Iron rods.
- ▲ Found 5/8" Iron rod monument of record.
- ⊠ INITIAL POINT 6" X 6" X 24" concrete monument with a 2" brass cap, 4.52' N 89° 46' 39" W, 50.00' S 70° 13' 24" W, 11.20' R=101.14' L=12.22'

APPROVALS

CITY OF HERMISTON PLANNING COMMISSION
The accompanying plat is hereby approved by resolution and adopted on this 9TH day of AUGUST, 1978 and approval duly filed.

Bernard W. Capra, Chairman
Patricia J. Haulhouse, Secretary

CITY ENGINEER
Approved this 23RD day of OCTOBER, 1978.

Patrick D. Napelton, City Engineer

HERMISTON CITY COUNCIL
The accompanying plat is hereby approved by resolution and adopted on this 23RD day of OCTOBER, 1978 and approval duly filed.

L. P. Gray, Mayor

HERMISTON IRRIGATION DISTRICT
The accompanying plat is hereby approved by resolution and adopted on this 14TH day of August, 1978 and approval duly filed.

Hugh Thompson, Chairman

UMATILLA COUNTY ASSESSOR AND TAX COLLECTOR
I, James T. White Sr. and I, D. L. Bratt, respectively Assessor and Tax Collector of Umatilla County, Oregon, each hereby certify that we have examined the tax records relative to the land covered by the accompanying plat, and that all monies due for state and county taxes and assessments that could now constitute a lien on said land have been paid and we hereby approve said plat, dated this 13 day of August, 1978.

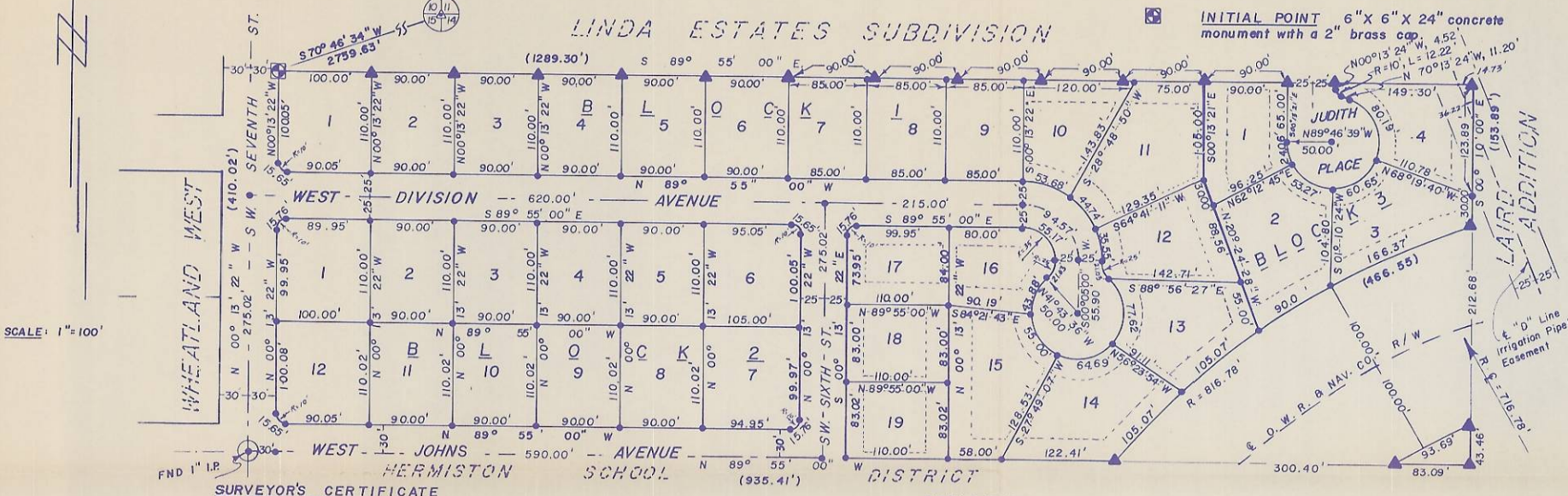
James T. White, Assessor
D. L. Bratt, Tax Collector
By *Renée A. Cary*, Deputy

UMATILLA COUNTY COMMISSION
This is to certify that the accompanying plat is approved for filing and placed in the record of town plats of Umatilla County, Oregon by the undersigned by its order dated the _____ day of _____, 1978, and recorded in the County Journal _____ page _____.

Frank Street, Chairman
Fred Holbert, Commissioner
Will Rogers, Commissioner

UMATILLA COUNTY CLERK
ATTEST: I, J. Dean Fouquette, Sr. County Clerk, of Umatilla County, Oregon, do hereby certify that the above named were on the date of said order above specified and are now the duly qualified, elected, sworn and acting chairman and commissioners of said county; that the signatures are the genuine signatures thereof and the seal hereto affixed is the seal of my office.

J. Dean Fouquette, Sr., County Clerk



SCALE: 1" = 100'

STATE OF OREGON)
COUNTY OF UMATILLA)SS
I, Thomas F. Lagier, being first duly sworn, do depose and say that I am a duly registered surveyor of the State of Oregon, and that I have correctly surveyed and marked with legal monuments the land represented on the above plat:

Commencing at the NW corner of the NE 1/4 of Section 15, T4 N, R28 E, W.M., Thence S 00° 13' 22" E, 912.44 feet; Thence S 89° 55' 00" E, 30.00 feet to the SW corner of Lot 13, Block 2, LINDA ESTATES SUBDIVISION, said point being the ACTUAL POINT OF BEGINNING and the INITIAL POINT: Thence S 89° 55' 00" E, 1289.30 feet; Thence S 00° 10' 00" E, 153.89 feet; Thence along an 816.78 foot radius curve concave to the southeast, a distance of 466.55 feet to a point the chord of which bears S 56° 16' 04" W, 460.23 feet; Thence N 89° 55' 00" W, 935.41 feet; Thence N 00° 13' 22" W, 410.02 feet; Thence S 89° 55' 00" E, 30.00 feet to the INITIAL POINT: said INITIAL POINT being located S 70° 46' 34" W, 2759.63 feet from the NE corner of said Section 15.

STATE OF OREGON)SS
COUNTY OF UMATILLA)SS
Be it hereby known by these presents that the undersigned does hereby establish and acknowledge the accompanying plat as the official map and plat of LINDA ESTATES II SUBDIVISION to the City of Hermiston, Umatilla County, Oregon, and that the undersigned owner of the land on the accompanying plat does hereby dedicate to the use of the public forever the streets and avenues designated on said plat, together with a 6.00 foot utility easement adjacent to all lot lines.

Roland Haertl
Roland Haertl

Be it remembered that on this 19TH day of July, 1978 personally appeared before me Roland Haertl, who is known to me to be the identical person describe in and who executed the above instrument and who acknowledged to me that he executed the same freely and voluntarily.

Kenneth R. Bunn
Notary Public for Oregon
My Commission expires 8-25-79

REGISTERED PROFESSIONAL LAND SURVEYOR

OREGON
SEPT 23 1977
THOMAS F. LAGIER
1242

Thomas F. Lagier
Thomas F. Lagier

Subscribed and sworn before me this 7 day of July, 1978

Shelma C. Owen
Notary Public for Oregon
My commission expires 4/9/79

