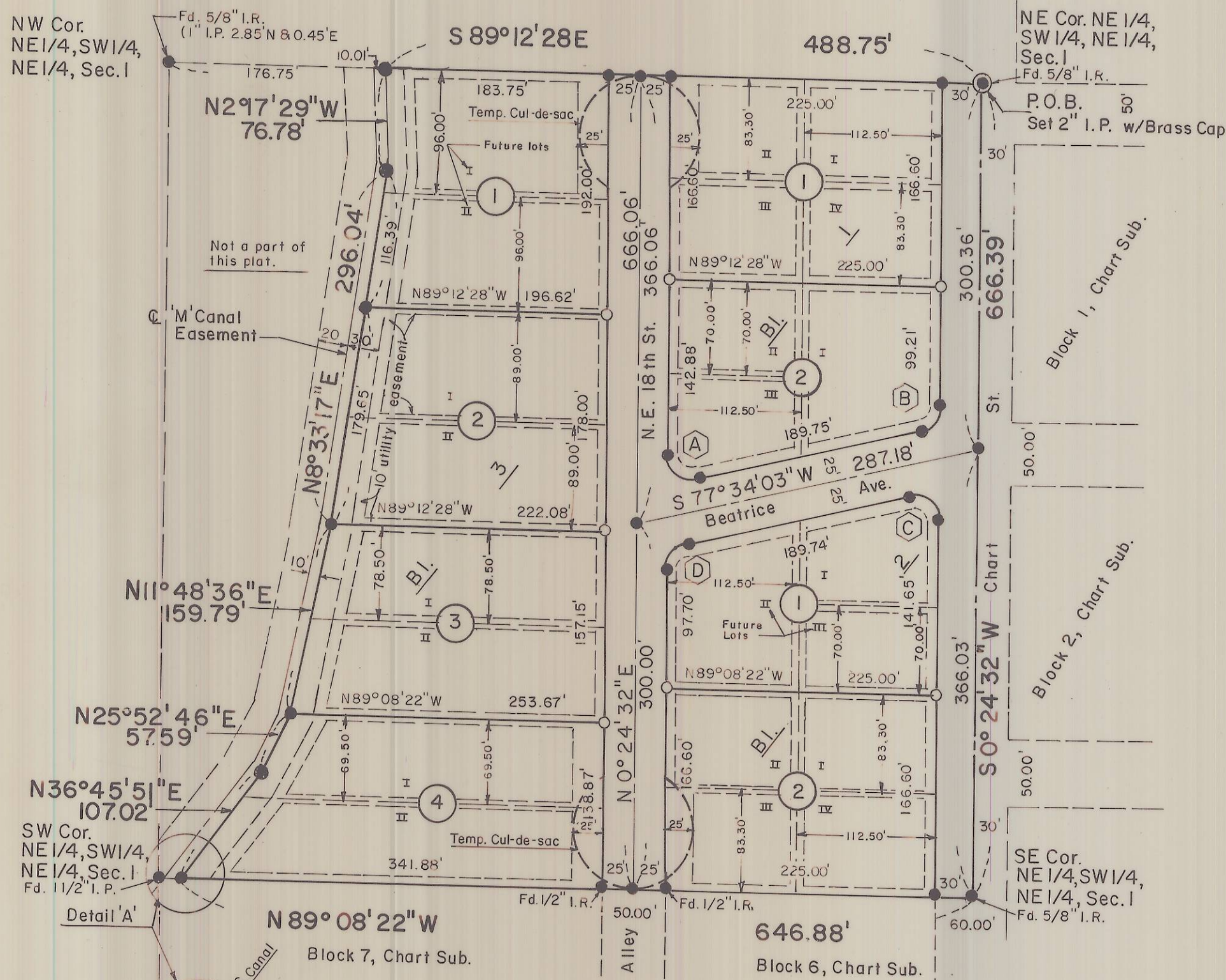


# ROFF SUBDIVISION

Located in the NE 1/4 Sec. 1, T4N, R28E, W. M.,  
Umatilla County, Oregon



Curve Data

Curve	Rad.	Arc	Tan	Chord Bearing	Chord
A	20'	35.90	25.07	N 51° 00' 43" W	31.27
B	20'	26.93	15.95	S 38° 59' 17" W	24.94
C	20'	35.90	25.07	N 51° 00' 43" W	31.27
D	20'	26.93	15.95	S 38° 59' 17" W	24.94

Legend

- Point of Beginning
  - 5/8" x 30" Iron rod with tag.
  - 1/2" x 24" Iron rod with tag.
  - 10' Utility easement; 5' on each side of interior lot lines.
- NOTE: Boundary established from 1975 Krumbein survey for Daniels.

### UMATILLA COUNTY PLANNING COMMISSION:

The accompanying plat is approved and adopted this 27<sup>th</sup> day of MAY, 1982, and approval duly filed.

*Jean Brogaille*  
Chairman

Vice-chairman

### HERMISTON IRRIGATION DISTRICT:

Approved this 11<sup>th</sup> day of May, 1982 by the board of directors of the district.

*JK Tokery*  
Chairman

Secretary

### SURVEYOR'S CERTIFICATE:

I, G. Dennis Edwards, a registered Surveyor of the State of Oregon, being duly sworn, do hereby state that I have correctly surveyed and monumented this plat of "ROFF SUBDIVISION".

Beginning at the NE corner of the NE 1/4 of the SW 1/4 of the NE 1/4 of Section 1, T4N, R28E, W. M., Umatilla County, Oregon; thence S 0° 24' 32" W along the East line of the said NE 1/4 of SW 1/4 of the NE 1/4 of Section 1 a distance of 666.39 feet to the SE corner of the said NE 1/4; thence N 89° 08' 22" W along the South line of the said NE 1/4, 646.88 feet; thence N 36° 45' 51" E 107.02 feet; thence N 25° 52' 46" E 57.59 feet; thence N 11° 48' 36" E 159.79 feet; thence N 8° 33' 17" E 296.04 feet; thence N 2° 17' 29" W 76.78 feet to a point on the North line of the NE 1/4 of the SW 1/4 of the NE 1/4 of the said Section 1; thence S 89° 12' 28" E along the said North line 488.75 feet to the P.O.B.

Subscribed and sworn to before me this 24<sup>th</sup> day of May, 1982.

*G. Dennis Edwards*  
G. Dennis Edwards, P.L.S. Ore. 951

*Dona M. Fletcher*  
Notary Public for the State of Oregon

My commission expires Jan 22, 1983

### DEDICATION:

Know all men by these presents: The undersigned owners of the land as shown on this plat, do hereby dedicate to the public forever the streets as delineated on this plat and also a 10.00 foot utility easement along, and adjacent to, all exterior lot lines and a 5.00 foot utility easement along, and adjacent to, all interior lot lines, unless otherwise specified. They also hereby acknowledge that this is the official plat of "ROFF SUBDIVISION".

*Larry L. Roff* *Marjorie L. Roff*  
Larry L. Roff Marjorie L. Roff

Larry Roff and Marjorie Roff, know by me to be the persons who executed the above dedication freely and voluntarily, appeared before me on this 24<sup>th</sup> day of May, 1982.

*Dona M. Fletcher*  
Notary Public for the State of Oregon

My commission expires Jan 22, 1983

### UMATILLA COUNTY COMMISSION:

This is to certify that this plat is hereby approved for filing and for placement in the record of Plats of Umatilla County, Oregon by order of the undersigned on this 24<sup>th</sup> day of June, 1982 and recorded in the County Journal \_\_\_\_\_, Page \_\_\_\_\_.

Chairman

*Frank L. Shmidt*  
Commissioner

*Robert J. Eyrk*  
Commissioner

### UMATILLA COUNTY CLERK:

I, J. Dean Fouquette, Sr., County Clerk of Umatilla County, Oregon, do hereby certify that the above were, on the date of the above order, and are now, the duly sworn and acting chairman and commissioners of Umatilla County, Oregon and that the signatures are genuine.

*J. Dean Fouquette*  
County Clerk

### UMATILLA COUNTY ASSESSOR AND TAX COLLECTOR:

We, James T. White, Sr. and D. L. Bratt, respectively Assessor and Tax Collector of Umatilla County, Oregon each hereby certify that we have examined the tax records relative to the land covered by this plat and that all State and County taxes and assessments that could constitute a lien have been paid, and we hereby approve this plat this 24 day of May, 1982.

*James T. White Sr.*  
County Assessor

*D. L. Bratt by Bernice Cary*  
County Tax Collector

### COUNTY SURVEYOR:

I, David Krumbein, County Surveyor for Umatilla County, Oregon, have examined this plat and hereby approve same this 24 day of MAY, 1982.

*David H. Krumbein*  
County Surveyor