

DESERT SHADOWS I ADDITION TO THE CITY OF HERMISTON UMATILLA COUNTY, OREGON

APPROVALS

CITY OF HERMISTON PLANNING COMMISSION

The accompanying plat is hereby approved by resolution and adopted on this 13th day of January, 1982, and approval duly filed.

Arnold W. Cooper CHAIRMAN
John J. Haddock SECRETARY

CITY ENGINEER

Approved this 13th day of JANUARY, 1982. Victor D. Nagel, City Engineer

HERMISTON CITY COUNCIL

The accompanying plat is hereby approved by resolution and adopted on this 8th day of FEBRUARY, 1982, and approval duly filed.

HERMISTON IRRIGATION DISTRICT

The accompanying plat is hereby approved by resolution and adopted on this 9 day of Nov, 1982.

BOARD OF COMMISSIONERS

This is to certify that the accompanying plat is approved for filing and recording in the "Record of Town Plats" of Umatilla County, Oregon by its order dated this 9 day of Dec, 1982, recorded in County Journal 84 page 1582.

James J. White CHAIRMAN
Frank J. Strick COMMISSIONER

UMATILLA COUNTY ASSESSOR AND TAX COLLECTOR

I, James T. White, Sr., and I, D.L. Bratt, respectively Assessor and Tax Collector of Umatilla County, Oregon each hereby certify that we have examined the tax records relative to the land covered by the accompanying plat, and that all monies due for state and county taxes and assessments that could now constitute a lien on said land have now been paid, and we hereby approve said plat, dated this 4 day of December, 1982.

James J. White ASSESSOR
D. Bratt TAX COLLECTOR

UMATILLA COUNTY CLERK

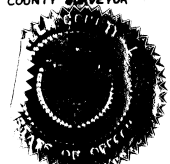
ATTEST: I, J. Dean Fougates, Sr., County Clerk of Umatilla County, Oregon, do hereby certify that the above named were on the date of said order above specified and are now the duly qualified, elected, sworn and acting chairman and commissioner of said county; that the signatures are the genuine signatures thereof and that hereto affixed is the seal of my office.

UMATILLA COUNTY SURVEYOR

I, David H. Krumbein, Umatilla County Surveyor, have examined the accompanying plat and certify that it meets all Oregon statutes and if finances required for filing.

DATE 6 Dec 1982
David H. Krumbein COUNTY SURVEYOR

Curve No.	Bearing	Distance
1	S 45° 19' 30" W	14.14
2	S 04° 23' 03" W	44.96
3	S 14° 32' 35" W	69.86
4	S 26° 41' 57" W	59.81
5	N 36° 49' 52" E	51.35
6	S 79° 17' 16" E	46.00
7	S 13° 16' 34" E	62.42
8	S 47° 03' 51" W	37.00
9	N 75° 41' 29" W	58.11
10	N 13° 28' 07" W	45.00
11	S 88° 19' 30" W	14.14
12	S 34° 09' 28" W	39.85
13	S 02° 30' 45" E	118.44
14	S 25° 15' 38" E	34.83
15	N 11° 30' 35" W	54.77
16	N 07° 18' 36" E	58.71
17	N 28° 18' 04" E	45.83
18	N 38° 34' 50" E	29.96
19	N 01° 40' 30" W	14.14
20	N 85° 03' 48" W	40.00
21	N 32° 07' 34" W	46.00
22	N 79° 27' 36" E	41.00
23	N 65° 32' 32" E	34.00
24	N 76° 04' 37" W	36.00
25	S 21° 04' 25" E	24.25
26	N 37° 04' 07" E	28.25
27	N 16° 18' 28" E	71.78
28	N 04° 28' 39" E	37.88
29	N 44° 20' 30" W	14.14

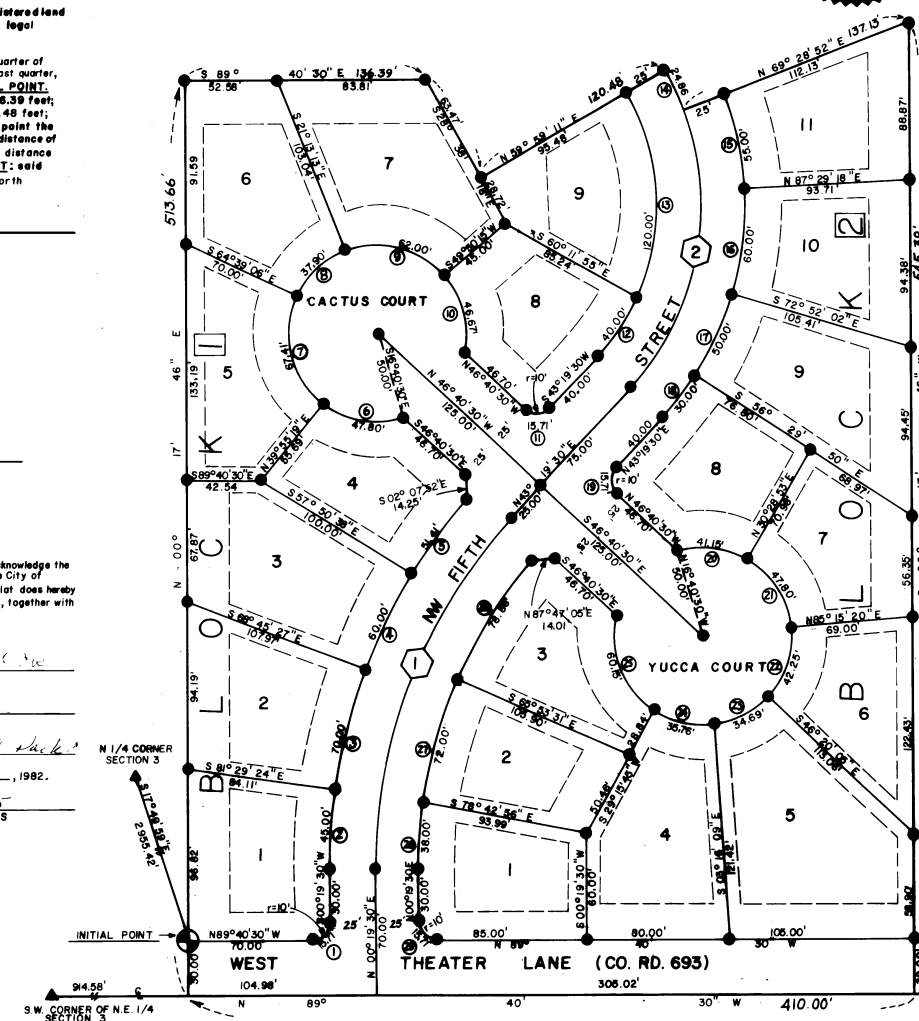


STATE OF OREGON }
COUNTY OF UMATILLA }
I, J. Dean Fougates, Sr., County Clerk, certify that this instrument was received and recorded
ON Dec. 13, 1982
at 3:36 P.M. in the office of Town Plats of said county
Book 84
P.P. 12
J. DEAN FOGATES, SR.
By Betty Jo Branning
Page 15.00 of 88205

- LEGEND**
- Set 5/8"x30 iron rod
 - ⊕ Set 6" dia x 30" concrete monument with brass cap as INITIAL POINT
 - ▲ Found brass monument set by county surveyor in 7/18/80 Remonumentation Survey
 - Building setback line
 - Lot bearing and chord distances.

CENTERLINE CURVE DATA

	CURVE ①	CURVE ②
CENTERLINE RADIUS	290.00'	150.00'
CENTRAL ANGLE	43° 00' 00"	73° 20' 19"
TANGENT	114.23'	111.68'
ARC LENGTH	217.64'	192.00'
LONG CHORD	212.57'	179.16'



SCALE: 1" = 80'

BASIS OF BEARING:
West boundary of NE 1/4 of Section 3 bears N00°11'40"E as determined by Krumbein Remonumentation Survey as Umatilla County surveyor dated 7/18/80.

SURVEYOR'S CERTIFICATE

STATE OF OREGON)
COUNTY OF UMATILLA) S.S.

I, Thomas F. Lagier, being first duly sworn, do depose and say that I am a duly registered land surveyor of the State of Oregon, and that I have correctly surveyed and marked with legal monuments the land represented on the above plat as follows:

COMMENCING at a brass monument located at the Southwest corner of the Northeast quarter of Section 3, T4N, R28E; Thence S89°40'30"E along the South boundary of said Northeast quarter, a distance of 914.58 feet; Thence N00°17'46"E, a distance of 30.00 feet to the INITIAL POINT; Thence N00°17'46"E, a distance of 483.66 feet; Thence S89°40'30"E, a distance of 136.39 feet; Thence S28°38'18"E, a distance of 63.47 feet; Thence N59°59'11"E, a distance of 120.48 feet; Thence along 150.00 foot radius curve concave to the Southwest 24.06 feet to a point the chord of which bears S25°15'58"E, a distance of 24.63 feet; Thence N68°28'58"E, a distance of 137.15 feet; Thence S00°17'46"W, a distance of 545.38 feet; Thence N89°40'30"W, a distance of 410.00 feet; Thence N00°17'46"E, a distance of 30.00 feet to the INITIAL POINT; said INITIAL POINT being located S17°49'59"E, a distance of 2986.42 feet from the North quarter corner of said Section 3.

REGISTERED PROFESSIONAL LAND SURVEYOR
Thomas F. Lagier
THOMAS F. LAGIER P.L.S.

OREGON
SEPT. 23 1977
THOMAS F. LAGIER
1242

Subscribed and sworn before me this 13 day of January, 1982.
Thelma E. Cuten
NOTARY PUBLIC FOR OREGON
MY COMMISSION EXPIRES 4/9/83

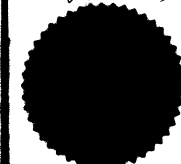
DEDICATION

STATE OF OREGON)
COUNTY OF UMATILLA) S.S.

Be it hereby known by these presents that the undersigned does hereby establish and acknowledge the accompanying plat as the official map and plat of DESERT SHADOWS I ADDITION to the City of Hermiston, Umatilla County, and that the undersigned owner of the land on the accompanying plat does hereby dedicate to the use of the public forever the streets and avenues designated on said plat, together with a 6.00 foot utility easement adjacent to all lot lines.

HALLMARK INVESTMENT CO.
DATE 1-11-82
PRESIDENT
VICE PRESIDENT

Personally appeared the above named Carolotte A. Beck & Kenneth C. Beck
Subscribed and sworn on this 11 day of January, 1982.
Carl E. Siders
NOTARY PUBLIC FOR OREGON
MY COMMISSION EXPIRES 5-1985



I HEREBY CERTIFY THAT THIS IS A TRUE COPY OF THE ORIGINAL PLAT.
December 10, 1982. David J. PLS