

ALDERBROOKE ADDITION

in the NE 1/4 of the SE 1/4 of the NE 1/4 of the NW 1/4 of Sec. 15, T4N, R28E, W.M.
a Replot of Nancy Estates, Hermiston, Oregon
Umatilla County

STATE OF OREGON, } ss
COUNTY OF UMATILLA, }
I, J. Dean Fouquette, Sr., County Clerk,
certify that this instrument was received and
recorded
ON November 22, 1985
at 3:43 o'clock P.M. in the record
of Towne Plats of said County in
Book Page
13 7
scale: 1"=100'
May 28, 1985
J. DEAN FOUQUETTE, SR.
County Clerk
By Nancy A. Lilly Deputy
Fees \$ 15.00 No. 115510

APPROVALS

HERMISTON IRRIGATION DISTRICT

The accompanying plat is hereby approved by resolution of the undersigned's Board of Directors adopted this 12th day of November, 1985.

J. D. O'Leary Chairman
Justin A. Brewer Secretary

CITY OF HERMISTON PLANNING COMMISSION

The accompanying plat is hereby approved by resolution and adopted on this 13th day of MARCH, 1985, and approval duly filed.

Bernard W. Casper Chairman

HERMISTON CITY COUNCIL

The accompanying plat is hereby approved by resolution and adopted on this 14th day of OCTOBER, 1985, and approval duly filed.

Raymond R. Schmitt Mayor

CITY ENGINEER

Approved this 14th day of OCTOBER, 1985.

Patrick D. Napleton City Engineer

UMATILLA COUNTY ASSESSOR and TAX COLLECTOR

I, James T. White, County Assessor and Bernice A. Cary, County Tax Collector of Umatilla County, Oregon, each hereby certify that we have examined the tax records relative to the land conveyed by the accompanying plat and that all monies due for state and county taxes and assessments that could now constitute a lien on said land have been paid and we hereby approve said plat, dated this 15 day of November, 1985.

James T. White County Assessor

Bernice A. Cary County Tax Collector

UMATILLA COUNTY COMMISSION

This is to certify that the accompanying plat is approved for filing and placed in the record of Towne Plats of Umatilla County, Oregon, by the undersigned by its order dated this ___ day of ___, 1985, and recorded in the County Journal, Page ___.

William S. Hansell Chairman

Gene Youngman Commissioner

James S. Hughes Commissioner

UMATILLA COUNTY CLERK

Attest: I, J. DEAN FOUQUETTE, Sr., County Clerk of Umatilla County, Oregon, do hereby certify that the above named were on the date of said order above specified and are now the duly qualified, sworn and acting Chairman and Commissioners of said county, that the above signatures are the genuine signatures thereof and the seal hereto affixed is the seal of my office.

J. Dean Fouquette, Sr. County Clerk

SURVEYOR'S CERTIFICATE

I, David H. Krumbein, being first duly sworn, do depose and say that I am a duly registered surveyor of the State of Oregon, and that I have correctly surveyed and marked with legal monuments the land represented on the accompanying plat; and that the Initial Point lies on the East-West centerline of the NE 1/4 of the NW 1/4 of Section 15, T4N, R28E, W.M., 589°43'50"E 200 feet from the center of said NE 1/4 of the NW 1/4 of Section 15.

Beginning of the above described Initial Point; thence S89°43'50"E along the North line of the SE 1/4 of the NE 1/4 of the NW 1/4 of said Section 15 a distance of 475.14 feet; thence S0°10'06"E and parallel with SW 7th Street a distance of 310.46 feet to the North line of West Division Street; thence N89°39'46"W along said North line a distance of 475.47 feet to the East line of SW 8th Street; thence N0°06'31"W along said East line a distance of 309.90 to the Initial Point.

All being in the County of Umatilla, Oregon.

David H. Krumbein

David H. Krumbein, PLS 933
Subscribed and sworn to before me this 2 day of October, 1985.

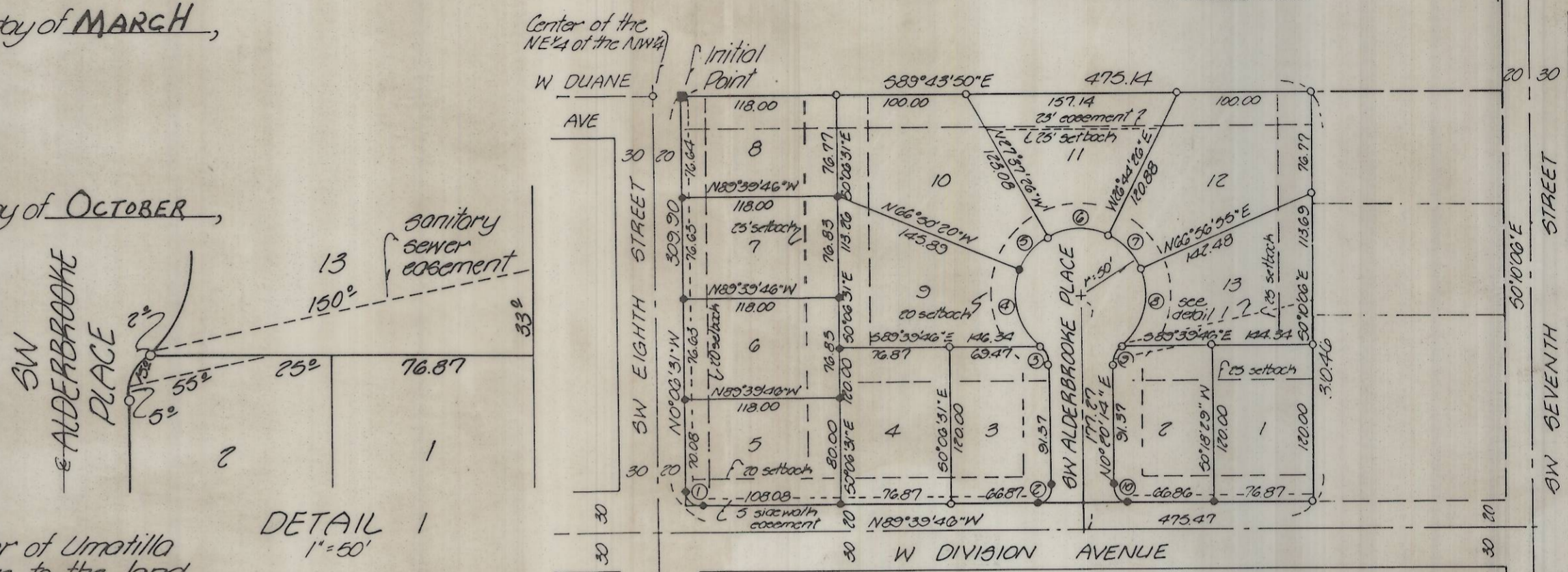
Michelle L. Sotka
Notary Public for Oregon

My Commission expires 4/4/88

Michelle L. Sotka
MICHAEL L. SOTKA
Notary Public for Oregon
My Commission expires 4/4/88

This is a true and exact copy.
David H. Krumbein
David H. Krumbein

Plat Prepared by
Krumbein Engineering Ltd.
361 SE Second
Pendleton, Oregon 97801
276-3244



NOTE:
Special 5' sidewalk easement parallel to SW 8th St and W Division St.
Building setbacks are 20' front, 7' sides & 25' back.

- denotes Initial Point Brass Cap
- denotes set 3/8" x 30" iron pin with aluminum cap stamped PLS 233
- denotes 1/2" x 3/8" iron pin set by Edwards for the Plat of Nancy Estates in 1979

No.	Radius	Arc	Chord	Ch Bearing
1.	10.00	15.63	14.09	S44°53'08"E
2.	10.00	15.70	14.14	N45°20'07"E
3.	25.00	41.02	20.41	N25°45'48"W
4.	50.00	61.97	33.58	N16°20'46"W
5.	50.00	34.22	33.56	N42°46'06"E
6.	50.00	47.44	45.68	N89°33'31"E
7.	50.00	35.03	34.37	S45°09'18"E
8.	50.00	62.46	33.48	S16°44'15"W
9.	25.00	21.02	20.41	S24°25'54"W
10.	10.00	15.70	14.14	S44°39'53"E

DEDICATION

KNOW ALL MEN BY THESE PRESENTS: that the undersigned owners of the land shown on the accompanying plat, do hereby dedicate to the use of the public forever the streets and avenues designated on said plat and a 6-foot continuous easement on all lots, said easement being parallel to all lot lines, is hereby dedicated by the Dedicators for sewer, water, electricity, light, gas, telephone, television and other utilities and for their installation and maintenance, irrespective of whether the same may be installed before or after date by the dedicators herein. That the undersigned parties do hereby establish and acknowledge the accompanying plat as the official map and plat of "ALDERBROOKE ADDITION", Umatilla County, Oregon.

Carl E. Johnson and David K. Johnson

Robert V. Canal Vice President
U.S. Nat'l Bank

Daniel W. Barry

Jose Fisher
E. V. P. INLAND EMPIRE BANK

Carl E. Stahl and
The Bay, Francklin.

State of Oregon } ss
County of Umatilla }

On this 4 day of October, 1985, appeared to me personally known to be the identical persons who executed the above dedication and who personally acknowledged to me that they executed same freely and voluntarily.

Subscribed and sworn before me this 4 day of October, 1985.

David H. Krumbein
Notary Public for Oregon

My Commission expires 7/3/87

David H. Krumbein
DAVID H. KRUMBEIN
NOTARY PUBLIC-OREGON
My Commission Expires 7/3/87

ALDERBROOKE
4N 28 15 B A