

APPROVALS:

CITY OF PENDLETON

THE ACCOMPANYING PLAT IS HEREBY APPROVED
 THIS 19th DAY OF January, 2000. 4999-
Raymond Allen
 CITY OF PENDLETON PLANNING DIRECTOR

THE ACCOMPANYING PLAT IS HEREBY APPROVED
 THIS 24th DAY OF January, 2000. 1999-
James E. Deane
 CITY OF PENDLETON SURVEYOR

UMATILLA COUNTY

THE ACCOMPANYING PLAT HAS BEEN EXAMINED AND IS HEREBY APPROVED
 THIS 16 DAY OF December, 1999.
David Hill
 UMATILLA COUNTY SURVEYOR

APPROVED FOR RECORDING IN THE "RECORD OF TOWN PLATS"
 THIS 24th DAY OF January, 2000. 4999-
William S. Hamwell
 CHAIRMAN
James J. Liberty
 COMMISSIONER

WE, THE ASSESSOR AND TAX COLLECTOR FOR UMATILLA COUNTY, OREGON, HAVE EXAMINED THE TAX RECORDS RELATIVE TO THE LAND COVERED BY THE ACCOMPANYING REPLAT AND THAT ALL MONIES DUE FOR STATE AND COUNTY TAXES AND ASSESSMENTS THAT COULD CONSTITUTE A LIEN ON SAID LAND HAVE BEEN PAID AND WE HEREBY APPROVE SAID REPLAT.
 DATED THIS 24th DAY OF January, 2000.
Richard Schuler
 UMATILLA COUNTY ASSESSOR
Richard Schuler
 UMATILLA COUNTY TAX COLLECTOR

RECORDING INFORMATION
 OFFICE OF COUNTY RECORDS:

STATE OF OREGON, }
 COUNTY OF UMATILLA }
 I certify that this instrument was received and recorded
 ON January 25, 2000
 at 8:00 o'clock Am., in the record of
 PLATS of said County.
 BOOK PAGE Slide
 14 01
 OFFICE OF COUNTY RECORDS
 By: GEORGIA DUNAWAY Records Officer
 Fees \$ 50.00 No. 2000-3640485

IMSLAND REPLAT

A REPLAT OF BLOCK 2, LOTS 1, 2, 3, 4, 5 AND 6 OF HOFFMAN SECOND ADDITION TO THE CITY OF PENDLETON, UMATILLA COUNTY, OREGON. LOCATED IN THE NW 1/4 OF SECTION 14, T2N., R32E., W.M.. DECEMBER, 1999.

OWNER'S DECLARATION

CIRCLE DOT RANCHES, A PARTNERSHIP, DOES HEREBY ACKNOWLEDGE IT HAS CAUSED THIS REPLAT TO BE PREPARED AND DOES HEREBY DESIGNATE THIS TO BE THE OFFICIAL PLAT OF "IMSLAND REPLAT, A REPLAT OF LOTS 1 THROUGH 6, BLOCK 2, HOFFMAN SECOND ADDITION".

THE LOT LINE COMMON TO LOTS 1 AND 2, BLOCK 2, LOTS 2 AND 3, BLOCK 2, LOTS 3 AND 4, BLOCK 2, LOTS 4 AND 5, BLOCK 2, AND LOTS 5 AND 6, BLOCK 2 ARE HEREBY EXTINGUISHED BY THIS REPLAT. THE RESULTING LOT IS DESIGNATED AS 'LOT 1 IMSLAND REPLAT'.

CIRCLE DOT RANCHES DOES HEREBY ACKNOWLEDGE THE EXISTING UTILITY EASEMENTS, AS CREATED ON THE ORIGINAL PLAT OF "HOFFMAN SECOND ADDITION" AND ACKNOWLEDGE THEY ARE TO REMAIN IN PLACE.

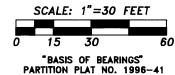
Robbie D. Waller, Trustee
 ROBBIE D. WALLER, TRUSTEE
 SUBSCRIBED AND SWORN BEFORE ME
 THIS 21 DAY OF December, 1999.
Mary Lou Dean
 NOTARY PUBLIC FOR OREGON
 12-2-2000
 MY COMMISSION EXPIRES



Dorothy M. Hoffman, Co-Trustee
 DOROTHY M. HOFFMAN, CO-TRUSTEE
 SUBSCRIBED AND SWORN BEFORE ME
 THIS 21 DAY OF December, 1999.
Mary Lou Dean
 NOTARY PUBLIC FOR OREGON
 12-2-2000
 MY COMMISSION EXPIRES



C.W. Hoffman, Jr., Co-Trustee
 C. W. HOFFMAN, JR., CO-TRUSTEE
 SUBSCRIBED AND SWORN BEFORE ME
 THIS 21 DAY OF December, 1999.
Mary Lou Dean
 NOTARY PUBLIC FOR OREGON
 12-2-2000
 MY COMMISSION EXPIRES



LEGEND

- - SET 5/8" X 30" IRON PIN WITH 1 1/2" YELLOW PLASTIC CAP MARKED "OR PLS 1106, WA PLS 1737Z".
- ⊙ - FOUND 5/8" IRON PIN WITH 1 1/2" ALUM. CAP IN MONUMENT BOX, FROM HOFFMAN SECOND ADDITION PLAT.
- ⊙ - FOUND BENT 1/2" IRON PIN FROM HOFFMAN SECOND ADDITION PLAT.
- ⊙ - FOUND 5/8" IRON PIN WITH 1 1/2" PLASTIC CAP FROM PARTITION PLAT NO. 1996-41.
- (XOX) - RECORD DIMENSION, HOFFMAN SECOND ADDITION PLAT.
- (XOX)R1 - RECORD DIMENSION, PARTITION PLAT NO. 1996-41.
- 5' - EASEMENT TO REMAIN, CREATED ON ORIGINAL PLAT OF "HOFFMAN SECOND ADDITION", WIDTH IS INDICATED.
- - INDICATES EXISTING LOT LINE TO BE REMOVED BY THIS REPLAT.
- LOT 3 - EXISTING LOT NUMBER, BLOCK 2, "HOFFMAN SECOND ADDITION" TO BE EXTINGUISHED BY THIS REPLAT.

SURVEYOR'S CERTIFICATE

I, WILLIAM R. WELLS, A REGISTERED PROFESSIONAL LAND SURVEYOR IN THE STATE OF OREGON, AND HAVE RECOVERED AND/OR MARKED WITH LEGAL MONUMENTS, THE LANDS SHOWN ON THIS REPLAT. RECOVERED MONUMENTS FROM THE HOFFMAN SECOND ADDITION PLAT AS SHOWN AND RE-ESTABLISHED THE MISSING CORNERS.

LEGAL DESCRIPTION

LOTS 1, 2, 3, 4, 5 AND 6, BLOCK 2, HOFFMAN SECOND ADDITION TO THE CITY OF PENDLETON, UMATILLA COUNTY, OREGON, AS RECORDED IN BOOK 12, PAGE 50, RECORD OF TOWN PLATS.

Will R. Wells
 WILLIAM R. WELLS, PLS

REGISTERED PROFESSIONAL LAND SURVEYOR

OREGON
 JULY 22, 1977
 WILLIAM R. WELLS
 1108
 RENEWS 6/30/00

LINE TABLE

NO.	BEARING	DISTANCE
L1	N 89°44'36" E	30.00'
L2	N 89°44'23" E	30.00'

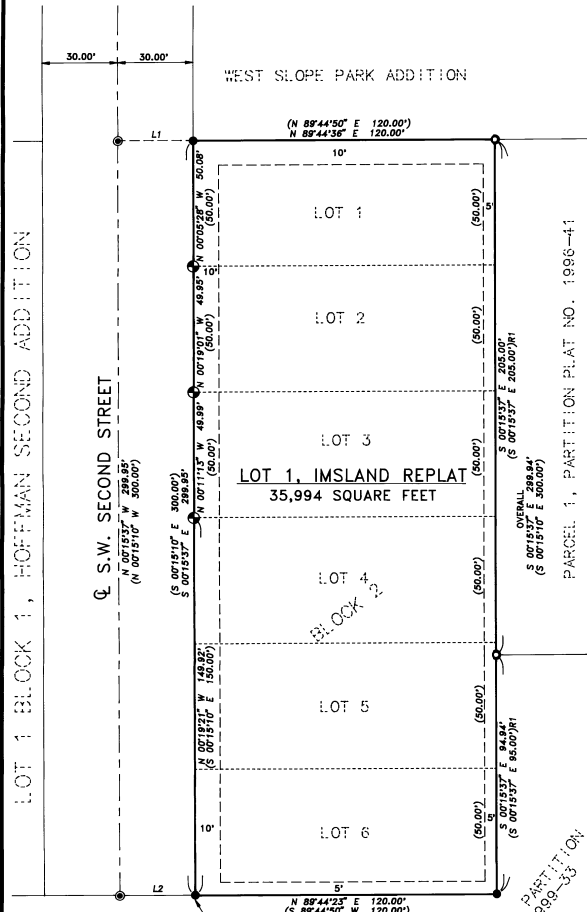
WILLIAM R. WELLS, PLS
 357 N.E. HWY. 11
 P.O. BOX 1696
 PENDLETON, OR 97801
 PHONE: (541) 276-6362

PROJECT:
 IMSLAND REPLAT FOR:
 CIRCLE DOT
 RANCHES

DATE: 10/99 DR. BY: DMT
 CK. BY: WRW NO: 99-820

A REPLAT OF LOTS 1, 2, 3, 4, 5 AND 6 BLOCK 2, "HOFFMAN SECOND ADDITION TO THE CITY OF PENDLETON, UMATILLA COUNTY, OREGON.

THIS IS A TRUE AND EXACT COPY.
Will R. Wells
 WILLIAM R. WELLS



LOT 1 BLOCK 1, HOFFMAN SECOND ADDITION

PARCEL 2, PARTITION PLAT NO. 1999-33

"INITIAL POINT"