

APPROVALS

CITY OF PENDLETON
 CITY OF PENDLETON PLANNING COMMISSION
 THE ACCOMPANYING PLAT IS HEREBY APPROVED AND ADOPTED
 THIS 21st DAY OF July 2003.
Ann H. Johnson CHAIRPERSON
Brian D. Miller PLANNING DIRECTOR
 CITY OF PENDLETON SURVEYOR
 THE ACCOMPANYING PLAT IS HEREBY APPROVED THIS 31st
 DAY OF July 2003.
David H. Kline
 PENDLETON CITY SURVEYOR

UMATILLA COUNTY
 UMATILLA COUNTY SURVEYOR
 I CERTIFY THAT I HAVE EXAMINED THE ACCOMPANYING PLAT,
 THAT IT COMPLIES WITH THE LAWS OF THE STATE OF OREGON
 WITH REFERENCE TO THE FILING AND RECORDING OF SUCH
 PLATS, AND I THEREFORE APPROVE SAID PLAT FOR SIGNATURE
 BY THE COUNTY COMMISSIONERS OF UMATILLA COUNTY, OREGON.
 DATED THIS 1st DAY OF August 2003.
David H. Kline
 UMATILLA COUNTY SURVEYOR
 UMATILLA COUNTY ASSESSOR AND TAX
 COLLECTOR

WE, THE ASSESSOR AND THE TAX COLLECTOR OF UMATILLA
 COUNTY, OREGON, DO HEREBY CERTIFY THAT WE HAVE EXAMINED
 THE TAX RECORDS RELATIVE TO THE LAND COVERED BY THE
 ACCOMPANYING PLAT AND THAT ALL MONETARY SUMS DUE
 FOR STATE AND COUNTY TAXES AND ASSESSMENTS THAT
 COULD CONSTITUTE A LIEN ON SAID LAND HAVE BEEN PAID
 AND WE HEREBY APPROVE SAID PLAT.
 DATED THIS 1st DAY OF August 2003.
Paul Anderson Tax Assessor
David H. Kline Tax Collector
 UMATILLA COUNTY ASSESSOR UMATILLA COUNTY TAX COLLECTOR

UMATILLA COUNTY COMMISSIONERS
 THIS IS TO CERTIFY THAT THE ACCOMPANYING PLAT IS
 APPROVED FOR FILING AND RECORDING IN THE RECORD OF
 TOWN PLATS OF UMATILLA COUNTY, OREGON, BY THE
 UNDERSIGNED, BY IT'S ORDER.
 DATED THIS 4th DAY OF August 2003.
William S. Hamel CHAIRMAN
James J. Roberts COMMISSIONER
Eric M. Johnson COMMISSIONER

RECORDING INFORMATION, UMATILLA COUNTY
 OFFICE OF RECORDS:

STATE OF OREGON,
 COUNTY OF UMATILLA }
 I certify that this instrument was received and
 recorded

ON August 5, 2003
 at 10:00 o'clock A.M., in the record of
 PLATS of said County,
 BOOK PAGE Slide
 14 62 B 118

OFFICE OF COUNTY RECORDS
 By: ...GEORGIA DUNAWAY...Records Officer
 Fees \$ 50.00 No. 2003-4440136

VISTA HEIGHTS ADDITION
 AN ADDITION TO THE CITY OF PENDLETON, OREGON.
 A REPLAT OF LOTS 3 AND 4, BLOCK 5,
 WEST SLOPE PARK ADDITION
 LOCATED IN THE SOUTHWEST QUARTER OF SECTION 11,
 TOWNSHIP 2 NORTH, RANGE 32 EAST, W.M.,
 CITY OF PENDLETON, UMATILLA COUNTY, OREGON.
 JULY, 2003

OWNER'S DECLARATION & DEDICATION:

STANLEY G. WALLIUS AND DOROTHY N. WALLIUS, HUSBAND AND WIFE,
 OWNERS OF THE LAND SHOWN ON THE ACCOMPANYING PLAT, DO
 HEREBY ESTABLISH AND ACKNOWLEDGE THIS PLAT AS THE OFFICIAL MAP
 AND PLAT OF "VISTA HEIGHTS", AN ADDITION TO THE CITY OF PENDLETON,
 OREGON.

THE 8 FOOT WIDE UTILITY EASEMENTS DESIGNATED ON THE PLAT OF
 WEST SLOPE PARK ADDITION, ALONG THE LOT LINE COMMON TO LOTS
 3 AND 4, BLOCK 5, ON THE EAST SIDE OF LOT 4, BLOCK 5, AND
 ALONG THE SOUTH LINES OF LOTS 3 AND 4, BLOCK 5 ARE HEREBY
 EXTINGUISHED BY THIS REPLAT.

WE HEREBY DEDICATE THE NEW PUBLIC UTILITY EASEMENTS SHOWN OR
 NOTED ON THIS PLAT FOR PUBLIC USE.

DESIGNATION OF INGRESS-EGRESS EASEMENTS HELD IN COMMON INTEREST:

THE 10.00 FOOT WIDE PORTIONS OF LOTS 5, 6, AND 7, TOGETHER WITH 3.00 FEET
 OF THE PUBLIC UTILITY EASEMENTS ABUTTING THE EAST AND WEST SIDES OF
 SAID 10.00 FOOT PORTIONS ARE HEREBY DESIGNATED AS COMMON INGRESS-
 EGRESS EASEMENTS APPURTENANT TO THE FOLLOWING DESIGNATED GROUPS
 OF LOTS: LOTS 3, 4 AND 5; LOTS 6, 8 AND 9; LOTS 7, 10 AND 11.

THE 5.00 FOOT PUBLIC UTILITY EASEMENT ON THE EAST SIDE OF LOT 1 AND
 THE WEST 5.00 FEET OF THE 7.00 FOOT PUBLIC UTILITY EASEMENT ON THE WEST
 SIDE OF LOT 2 ARE HEREBY DESIGNATED AS COMMON INGRESS-EGRESS
 EASEMENTS APPURTENANT TO LOTS 1 AND 2.

WE HEREBY DECLARE THE COMMON INGRESS-EGRESS EASEMENTS DESIGNATED
 ABOVE SHALL EXTEND TO THE NORTH RIGHT-OF-WAY LINE OF S.W. NYE
 AVENUE AND THAT SAID COMMON INGRESS-EGRESS MAY BE USED BY PUBLIC
 UTILITY COMPANY PERSONNEL FOR INGRESS AND EGRESS.

Stanley G. Wallius
 STANLEY G. WALLIUS, OWNER
Dorothy N. Wallius
 DOROTHY N. WALLIUS, OWNER

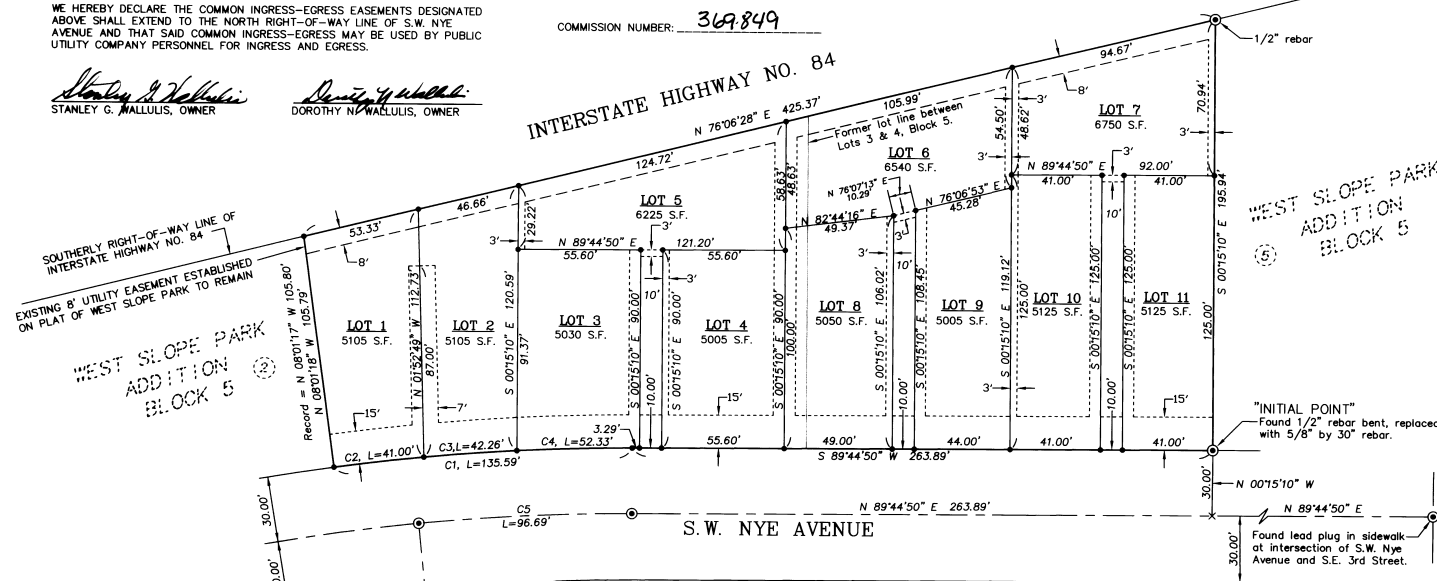
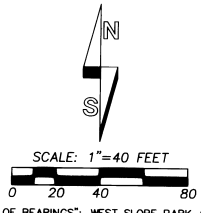
SUBSCRIBED AND SWORN BEFORE ME THIS 29 DAY OF

July 2003.

Christy H. ...
 NOTARY PUBLIC FOR THE STATE OF OREGON

MY COMMISSION EXPIRES: June 22, 2007

COMMISSION NUMBER: 369849



- LEGEND**
- - FOUND PLAT MONUMENT FROM WEST SLOPE ADDITION. 5/8" REBAR'S UNLESS OTHERWISE NOTED.
 - - SET 5/8" BY 30" REBAR WITH 1 1/4" YELLOW PLASTIC CAP MARKED *OR PLS 1106, WA PLS 17372".
 - - - - - INDICATES EXISTING UTILITY EASEMENT ESTABLISHED ON WEST SLOPE PARK ADDITION, RECORDED AT BOOK 11, PAGE 28, RECORD OF TOWN PLATS, UMATILLA COUNTY, OREGON, TO REMAIN AFTER REPLAT.
 - - - - - INDICATES NEW PUBLIC UTILITY EASEMENT. NEW EASEMENTS ARE 5 FEET WIDE UNLESS OTHERWISE SHOWN.
 - S.F. - INDICATES SQUARE FEET, ROUNDED TO NEAREST 5 SQUARE FEET.
 - ② - LOT NUMBER, PLAT OF WEST SLOPE PARK ADDITION.

CURVE TABLE

NO.	DELTA	RADIUS	LENGTH	LONG CHORD
C1	7°46'08"	1000.00'	135.59'	S 85°51'46" W 135.49'
C2	2°20'57"	1000.00'	41.00'	S 83°09'11" W 41.00'
C3	2°25'17"	1000.00'	42.26'	S 85°32'18" W 42.26'
C4	2°59'54"	1000.00'	52.33'	S 88°14'53" W 52.32'
C5	5°42'41"	970.00'	96.69'	N 86°53'32" E 96.65'

DECLARATION OF COVENANTS, CONDITIONS AND RESTRICTIONS PERTAINING TO THIS PLAT ARE RECORDED UNDER SEPARATE INSTRUMENT.

I CERTIFY THIS IS AN EXACT COPY OF THE PLAT OF VISTA HEIGHTS ADDITION.
William R. Wells
 WILLIAM R. WELLS, PLS

SURVEYOR'S CERTIFICATE

I, WILLIAM R. WELLS, A PROFESSIONAL LAND SURVEYOR IN THE STATE OF OREGON, DO HEREBY CERTIFY THAT I HAVE CORRECTLY SURVEYED AND MARKED WITH LEGAL MONUMENTS, IN ACCORDANCE WITH O.R.S. CHAPTER 92, AS REVISED, THE LANDS SHOWN IN THE ACCOMPANYING PLAT OF "VISTA HEIGHTS ADDITION".

REAL PROPERTY DESCRIPTION:
 LOTS 3 AND 4, BLOCK 5, WEST SLOPE PARK ADDITION TO THE CITY OF PENDLETON, UMATILLA COUNTY, OREGON, RECORDED AT BOOK 11, PAGE 28, RECORD OF TOWN PLATS, UMATILLA COUNTY, OREGON.

Will R. Wells
 WILLIAM R. WELLS, PLS 1106

REGISTERED PROFESSIONAL LAND SURVEYOR

Will R. Wells

OREGON
 JULY 22, 1977
 WILLIAM R. WELLS
 1106
 RENEWS 6/30/04

WILLIAM R. WELLS, PLS
 2602 N.E. RIVERSIDE PLACE
 P.O. BOX 1696
 PENDLETON, OR 97801
 PHONE: (541) 276-6362

DATE: 05/03 DR. BY: DMT
 CK. BY: WRW NO: 03-855

PROJECT: \SGWPLAT1
 VISTA HEIGHTS ADDITION