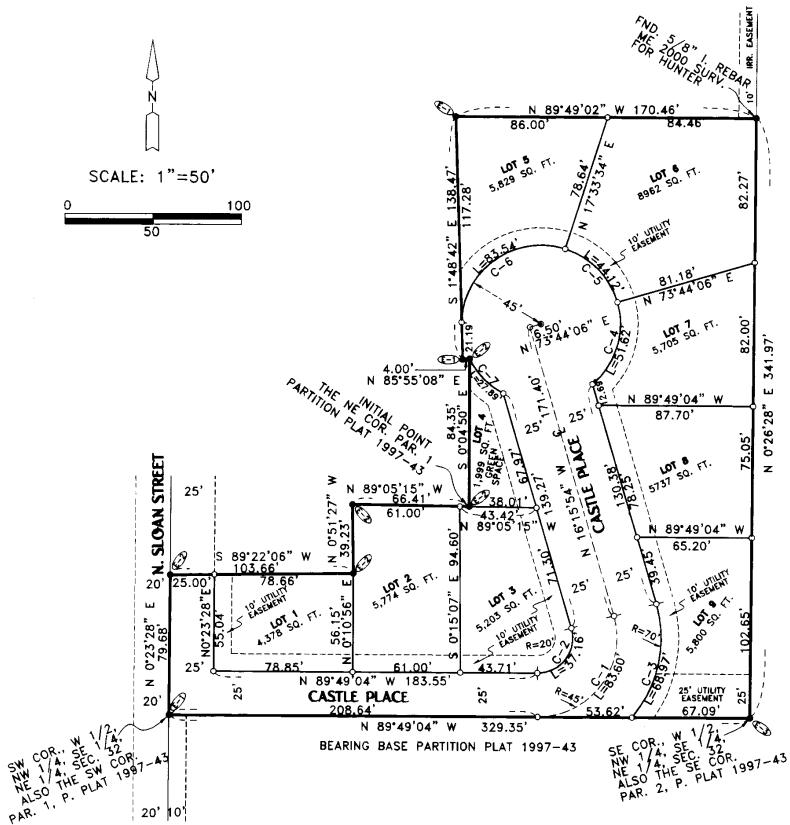
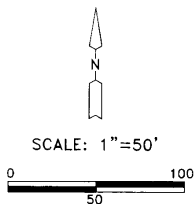


# "CASTLE KEEP SUBDIVISION"

IN PARCELS 1 & 2 PARTITION PLAT 1997-43

IN SE 1/4, NE 1/4, SECTION 32, T 4 N, R 29 E, W.M.,  
CITY OF STANFIELD, UMATILLA COUNTY, OREGON



### SURVEYOR'S CERTIFICATE & NARRATIVE:

I, G. DENNIS EDWARDS, AM A REGISTERED SURVEYOR OF THE STATE OF OREGON, AND HAVE MARKED WITH LEGAL MONUMENTS THE LAND DESCRIBED BELOW.

THE INITIAL POINT IS A 1/2" IRON REBAR WHICH MARKS THE NE CORNER OF PARCEL 1, PARTITION PLAT 1997-43 IN THE NE 1/4 OF SECTION 32, T 4 N, R 29 E, WILLAMETTE MERIDIAN, UMATILLA COUNTY, OREGON.  
DESCRIPTION: BEGINNING AT SAID INITIAL POINT AND RUNNING: THENCE ALONG THE EAST LINE OF PARCEL 2 OF SAID PARTITION PLAT 1997-43 THE FOLLOWING BEARINGS AND DISTANCES. N 0° 04' 50" W 84.35 FEET, THENCE S 85° 55' 08" W 4.00 FEET, THENCE N 1° 48' 42" W 138.47 FEET TO AN ANGLE POINT IN SAID WEST LINE; THENCE S 89° 49' 02" E PARALLEL WITH THE NORTH LINE OF SAID PARCEL 2 A DISTANCE OF 170.46 FEET TO A 5/8" IRON REBAR ON THE EAST LINE OF SAID PARCEL 2; THENCE S 0° 26' 28" W 341.97 FEET TO THE S.E. CORNER OF SAID PARCEL TWO; THENCE N 89° 49' 04" W ALONG THE SOUTH LINE OF SAID PARCELS 2 AND 1 A DISTANCE OF 329.35 FEET TO THE S.W. CORNER OF SAID PARCEL 1; THENCE N 0° 23' 28" E 79.68 FEET TO THE MOST WESTERLY N.W. CORNER OF SAID PARCEL 1; THENCE N 89° 22' 06" E ALONG THE NORTH LINE OF SAID PARCEL 1 A DISTANCE OF 103.66 FEET; THENCE N 0° 51' 27" W 39.23 FEET TO THE MOST EASTERLY N.W. CORNER OF SAID PARCEL 1; THENCE S 89° 05' 15" E 66.41' TO THE INITIAL POINT. THIS TRACT IS DESCRIBED IN A DEED TO CASTLE HOMES, LLC, RECORDED ON DOC. #20034520680 UMATILLA COUNTY DEED RECORDS.

### OWNER'S DECLARATION:

WE, THE OWNERS OF THE LAND DESCRIBED HEREON, HEREBY DECLARE THAT WE HAVE CAUSED THIS PLAT TO BE PREPARED.

WE HEREBY DEDICATE SLOAN STREET AND CASTLE PLACE TO THE PUBLIC FOR ACCESS AND UTILITIES.

WE ALSO DEDICATE A 10 FOOT PUBLIC UTILITY EASEMENT ALONG ALL STREET LINES AS SHOWN.

*T. Longley*  
TOM LONGLEY  
GENERAL MANAGER CASTLE HOMES, LLC

STATE OF OREGON }  
COUNTY OF UMATILLA }  
SUBSCRIBED AND SWORN BEFORE ME ON THIS  
16th DAY OF February, 2006  
Shelley Bennett  
NOTARY PUBLIC FOR OREGON  
Shelley Bennett  
PRINTED NAME  
COMMISSION NO. 382410  
MY COMMISSION EXPIRES 8-24-08

STATE OF OREGON }  
COUNTY OF UMATILLA }  
I certify that this instrument was received and recorded  
ON February 21, 2006  
at 2:15 o'clock Pm., in the record of  
PLATS of said County.  
BOOK PAGE Slide  
15 2  
OFFICE OF COUNTY RECORDS  
By: JEAN HEMPHILL, Records Officer  
Fees \$ 50.00 No. 2006-4960423

REGISTERED  
PROFESSIONAL  
LAND SURVEYOR  
*G. Dennis Edwards*  
OREGON  
JULY 16, 1971  
G. DENNIS EDWARDS  
9 8 1  
RENEWS 12/31/2007

### APPROVALS:

UMATILLA COUNTY SURVEYOR  
APPROVED THIS 16 DAY OF February, 2006

*David H. Keller*  
UMATILLA COUNTY SURVEYOR

CITY OF STANFIELD PLANNING COMMISSION  
APPROVED THIS 7th DAY OF February, 2006

*Steve Johnson*  
CHAIRMAN

STANFIELD IRRIGATION DISTRICT  
APPROVED THIS 7 DAY OF Feb, 2006

*Tom Kays*  
MANAGER

### UMATILLA COUNTY COMMISSIONERS

APPROVED THIS 21st DAY OF February, 2006

ABSENST  
CHAIRMAN  
*David M. Holman* *William S. Harrell*  
COMMISSIONER COMMISSIONER

### UMATILLA COUNTY ASSESSOR & TAX COLLECTOR

TAXES ARE PAID IN FULL.  
APPROVED THIS 16th DAY OF February, 2006

*Paul Chalmer* *Shelley Bennett*  
ASSESSOR TAX COLLECTOR  
Assessment Mgr.

THIS IS AN EXACT COPY: *G. Dennis Edwards*  
G. DENNIS EDWARDS

### CURVE TABLE:

#	RADIUS	LENGTH	CHORD	DELTA
C-1	45.00'	83.60'	N 36°57'31" E 72.09'	106°26'50"
C-2	20.00'	37.16'	N 36°57'31" E 32.04'	106°26'50"
C-3	70.00'	68.97'	N 11°57'40" E 66.21'	56°27'09"
C-4	45.00'	51.62'	N 16°35'51" E 48.84'	65°43'31"
C-5	45.00'	44.12'	N 44°21'10" W 42.37'	56°10'32"
C-6	45.00'	83.54'	S 94°22'34" W 72.05'	108°21'59"
C-7	45.00'	27.89'	S 44°05'09" E 27.44'	35°30'18"

- LEGEND:
- MONUMENT FND. AS NOTED
  - ⊕ FND. 1/2" I. REBAR, SET BY ME, 1981 SUR. FOR HERB ALLEN.
  - ⊕ FND. 1/2" I. REBAR, SET BY ME, 1992 SUR. FOR LEO HARLAND.
  - ⊕ FND. 5/8" REBAR, SET BY ME, SEPT. 1997 SUR. FOR HUNTER & GRIFFIN.
  - SET 5/8"x30" IRON REBAR WITH PLASTIC CAP #951
  - [000] OF RECORD MY 1981 SURVEY FOR ALLEN

02/02/2006 JOB# S0303074A  
EDWARDS SURVEYING P.O. BOX 763  
541-567-3336 HERMISTON, OREGON 97838  
DRAWN BY JMC

RECEIVED BY  
Umatilla County Surveyor  
Date 2-06  
By *G. Dennis Edwards*  
No. 26-32-B