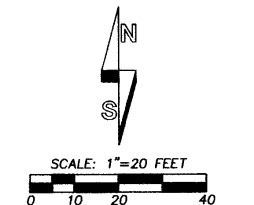
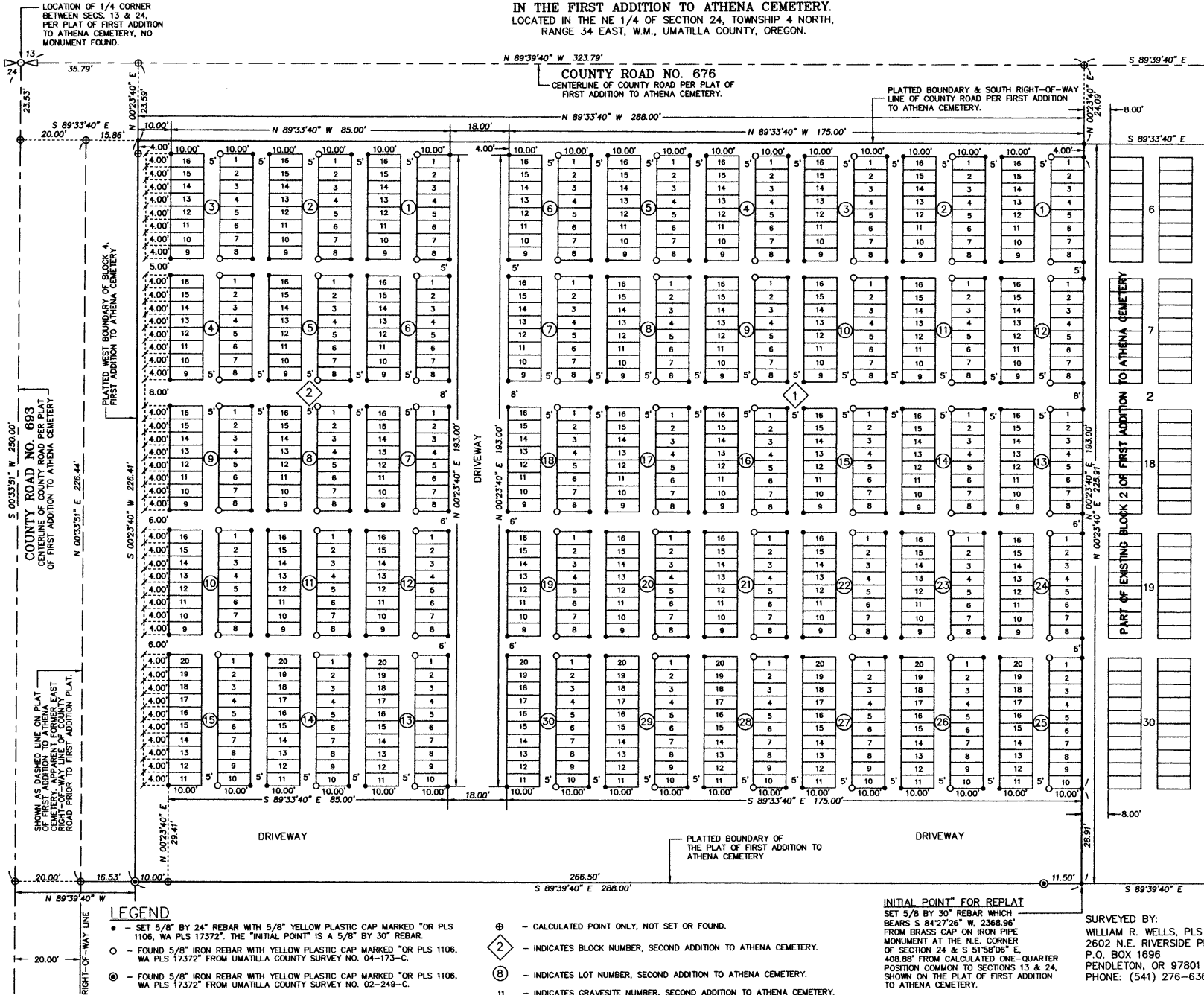


SECOND ADDITION TO ATHENA CEMETERY
 A REPLAT OF BLOCKS 3 & 4 & CERTAIN DRIVEWAYS & WALKWAYS
 IN THE FIRST ADDITION TO ATHENA CEMETERY.
 LOCATED IN THE NE 1/4 OF SECTION 24, TOWNSHIP 4 NORTH,
 RANGE 34 EAST, W.M., UMATILLA COUNTY, OREGON.



"BASIS OF BEARING": BEARINGS ARE BASED ON THE 1/2" REBAR MONUMENTS FOUND ON THE EAST LINE OF THE PLAT OF FIRST ADDITION TO ATHENA CEMETERY, AS SHOWN ON SURVEY NO. 02-249-C AND 04-173-C.

- NOTES:**
1. ALL GRAVESITES ARE 4.00 BY 10.00 FEET IN SIZE. EAST AND WEST SIDE LINES BEAR N 00°23'40" E AND S 00°23'40" W, NORTH AND SOUTH SIDE LINES BEARS N 89°33'40" E AND S 89°33'40" E.
 2. DIMENSIONS REPORTED ON THIS REPLAT, WHICH ARE COMMON WITH THOSE OF RECORD SURVEYS 04-173-C, 02-249-C, AND THE PLAT OF FIRST ADDITION TO ATHENA CEMETERY, ARE IDENTICAL.
 3. AREAS WITHIN REPLAT BOUNDARY, NOT OCCUPIED BY GRAVESITES, ARE DESIGNATED AS DRIVEWAYS AND WALKWAYS FOR GRAVESITE ACCESS.

REGISTERED PROFESSIONAL LAND SURVEYOR
William R. Wells
 OREGON
 JULY 22, 1977
 WILLIAM R. WELLS
 RENEWS 6/30/06

I CERTIFY THIS IS AN EXACT COPY OF THE PLAT OF SECOND ADDITION TO ATHENA CEMETERY.
William R. Wells
 WILLIAM R. WELLS, PLS
 RECORDING INFORMATION
 UMATILLA COUNTY OFFICE OF RECORDS:

STATE OF OREGON,
 COUNTY OF UMATILLA }
 I certify that this instrument was received and recorded
 ON March 1, 2006
 at 3:00 o'clock Pm., in the record of
 PLATS of said County.
 BOOK PAGE Slide
 15 4

OFFICE OF COUNTY RECORDS
 By: ...JEAN HEMPHILL...Records Officer
 Fees \$ 60.00 No. 2006-4960798

INITIAL POINT FOR REPLAT
 SET 5/8 BY 30" REBAR WHICH BEARS S 84°27'26" W, 2368.96' FROM BRASS CAP ON IRON PIPE MONUMENT AT THE N.E. CORNER OF SECTION 24 & S 51°58'06" E, 408.88' FROM CALCULATED ONE-QUARTER POSITION COMMON TO SECTIONS 13 & 24, SHOWN ON THE PLAT OF FIRST ADDITION TO ATHENA CEMETERY.

SURVEYED BY:
 WILLIAM R. WELLS, PLS
 2602 N.E. RIVERSIDE PLACE
 P.O. BOX 1696
 PENDLETON, OR 97801
 PHONE: (541) 276-6362

LEGEND

- - SET 5/8" BY 24" REBAR WITH 5/8" YELLOW PLASTIC CAP MARKED "OR PLS 1108, WA PLS 17372" THE "INITIAL POINT" IS A 5/8" BY 30" REBAR.
- - FOUND 5/8" IRON REBAR WITH YELLOW PLASTIC CAP MARKED "OR PLS 1108, WA PLS 17372" FROM UMATILLA COUNTY SURVEY NO. 04-173-C.
- ⊙ - FOUND 5/8" IRON REBAR WITH YELLOW PLASTIC CAP MARKED "OR PLS 1106, WA PLS 17372" FROM UMATILLA COUNTY SURVEY NO. 02-249-C.
- ⊕ - CALCULATED POINT ONLY, NOT SET OR FOUND.
- Ⓛ - INDICATES BLOCK NUMBER, SECOND ADDITION TO ATHENA CEMETERY.
- Ⓚ - INDICATES LOT NUMBER, SECOND ADDITION TO ATHENA CEMETERY.
- 11 - INDICATES GRAVESITE NUMBER, SECOND ADDITION TO ATHENA CEMETERY.

Umatilla County Surveyor
 3-06
 KK
 06-037-B

SECOND ADDITION TO ATHENA CEMETERY
 A REPLAT OF BLOCKS 3 AND 4 & CERTAIN DRIVEWAYS & WALKWAYS
 IN THE FIRST ADDITION TO ATHENA CEMETERY.
 LOCATED IN THE NE 1/4 OF SECTION 24, TOWNSHIP 4 NORTH,
 RANGE 34 EAST, W.M., UMATILLA COUNTY, OREGON.

APPROVALS

UMATILLA COUNTY PLANNING COMMISSION

THIS IS TO CERTIFY THAT THE ACCOMPANYING REPLAT IS APPROVED
 THIS 1st DAY OF March 2006.

W. Gary Givens *Warts Smith*
 CHAIRPERSON SECRETARY

UMATILLA COUNTY SURVEYOR

I HEREBY CERTIFY THAT I HAVE EXAMINED THE ACCOMPANYING REPLAT
 AND THAT IT COMPLIES WITH THE LAWS OF THE STATE OF OREGON
 WITH REFERENCE TO THE FILING AND RECORDING OF SUCH PLATS,
 AND I THEREFORE APPROVE SAID PLAT FOR SIGNATURE BY THE
 COUNTY COMMISSIONERS OF UMATILLA COUNTY, OREGON.

DATED THIS 22 DAY OF February 2006.

David H. Chai
 UMATILLA COUNTY SURVEYOR

UMATILLA COUNTY COMMISSIONERS

THIS IS TO CERTIFY THAT THE ACCOMPANYING REPLAT IS APPROVED FOR FILING
 AND RECORDING IN THE RECORD OF PLATS OF UMATILLA COUNTY, OREGON,
 BY THE UNDERSIGNED, BY ITS ORDER.

DATED THIS 22nd DAY OF February 2006.

James D. Roberts *Luise M. Hollman*
 CHAIRMAN COMMISSIONER
William S. Hummel
 COMMISSIONER

UMATILLA COUNTY
 ASSESSOR AND TAX COLLECTOR

WE, THE ASSESSOR AND THE TAX COLLECTOR OF UMATILLA COUNTY, OREGON, DO
 HEREBY CERTIFY THAT WE HAVE EXAMINED THE TAX RECORDS RELATIVE TO THE LAND
 COVERED BY THE ACCOMPANYING REPLAT AND THAT ALL MONETARY SUMS DUE FOR
 STATE AND COUNTY TAXES AND ASSESSMENTS THAT COULD CONSTITUTE A LIEN ON
 SAID LAND HAVE BEEN PAID AND WE HEREBY APPROVE SAID PLAT.

DATED THIS 22nd DAY OF February 2006

Paul Chalmers *Rhonda J. Schultz*
 COUNTY ASSESSOR COUNTY TAX COLLECTOR
Shelley Weinburn
 Assessor and Mgr.

SURVEYORS CERTIFICATE & NARRATIVE:

THE PLAT OF THE FIRST ADDITION TO ATHENA CEMETERY, AND UMATILLA COUNTY
 SURVEY NUMBERS 02-249-C AND 04-173-C ARE THE BASIS OF CONTROL FOR
 THIS REPLAT. CONTROLLING MONUMENTS WERE TIED AND NEW MONUMENTS
 WERE ESTABLISHED USING A TRIMBLE 5700 GEODETIC G.P.S. SYSTEM OPERATED
 IN REAL TIME KINEMATIC MODE. MONUMENTS WERE VERIFIED BY REDUNDANT TIES.

I, WILLIAM R. WELLS, DO HEREBY CERTIFY THAT I HAVE CORRECTLY SURVEYED AND
 MARKED WITH LEGAL MONUMENTS, PER ORS CHAPTER 92 AND 97, AS REVISED, THE
 LANDS SHOWN ON THIS PLAT OF "SECOND ADDITION TO ATHENA CEMETERY", A REPLAT
 OF BLOCKS 3 AND 4 AND CERTAIN DRIVEWAYS AND WALKWAYS ORIGINALLY PLATTED
 AS "FIRST ADDITION TO ATHENA CEMETERY", LOCATED IN THE NORTHEAST QUARTER
 OF SECTION 24, TOWNSHIP 4 NORTH, RANGE 34 EAST, W.M., UMATILLA COUNTY,
 OREGON, AND RECORDED AUGUST 2, 1957 IN BOOK 8, PAGE 23, OF THE RECORD OF
 TOWN PLATS OF UMATILLA COUNTY, OREGON.

REPLAT BOUNDARY DESCRIPTION:

BLOCKS 3 AND 4 AND CERTAIN DRIVEWAYS AND WALKWAYS IN THE FIRST
 ADDITION TO ATHENA CEMETERY, LOCATED IN THE NORTHEAST QUARTER OF
 SECTION 24, TOWNSHIP 4 NORTH, RANGE 34 EAST, W.M., UMATILLA COUNTY,
 OREGON AND MORE PARTICULARLY DESCRIBED BY METES AND BOUNDS
 COURSES AS FOLLOWS:

BEGINNING AT THE "INITIAL POINT", A 5/8 BY 30 INCH IRON REBAR WITH 1 1/4
 INCH YELLOW PLASTIC CAP MARKED "OR PLS 1106 WA PLS 17372" WHICH BEARS
 SOUTH 84°27'26" WEST A DISTANCE OF 2368.96 FEET FROM THE NORTHEAST
 CORNER OF SECTION 24 AND SOUTH 51°58'06" EAST A DISTANCE OF 408.88
 FEET FROM THE ONE-QUARTER CORNER COMMON TO SECTIONS 13 AND 24 AS
 SHOWN ON THE PLAT OF FIRST ADDITION TO ATHENA CEMETERY; THENCE
 NORTH 00°23'40" EAST A DISTANCE OF 225.91 FEET TO A POINT ON THE SOUTH
 RIGHT-OF-WAY LINE OF COUNTY ROAD NO. 676 AND THE NORTH LINE OF THE
 PLATTED BOUNDARY OF SAID FIRST ADDITION TO ATHENA CEMETERY; THENCE
 NORTH 89°33'40" WEST ALONG THE NORTH LINE OF SAID PLATTED
 BOUNDARY AND SOUTH RIGHT-OF-WAY LINE OF COUNTY ROAD NO. 676 A
 DISTANCE OF 288.00 FEET; THENCE SOUTH 00°23'40" WEST ALONG THE WEST
 LINE OF BLOCK 4 OF THE PLAT OF FIRST ADDITION TO ATHENA CEMETERY, AND
 ITS SOUTHERLY EXTENSION, A DISTANCE OF 226.41 FEET TO A POINT ON THE
 SOUTH LINE OF THE PLATTED BOUNDARY OF FIRST ADDITION TO ATHENA CEMETERY;
 THENCE SOUTH 89°39'40" EAST ALONG SAID PLATTED SOUTH LINE A DISTANCE OF
 288.00 FEET TO THE "INITIAL POINT".

William R. Wells
 WILLIAM R. WELLS, PLS.
 2602 N.E. RIVERSIDE PLACE
 P.O. BOX 1696
 PENDELTON, OR 97801
 PHONE: (541) 276-6362

REGISTERED
 PROFESSIONAL
 LAND SURVEYOR

William R. Wells
 OREGON
 JULY 22, 1977
 WILLIAM R. WELLS
 1106
 RENEWS 6/30/06

OWNERS DECLARATION AND DEDICATION:

THE ATHENA CEMETERY MAINTENANCE DISTRICT, A MUNICIPAL CORPORATION,
 OWNER OF THE LAND SHOWN ON THE ACCOMPANYING REPLAT DOES HEREBY
 ESTABLISH AND ACKNOWLEDGE THE ACCOMPANYING PLAT AS THE OFFICIAL MAP
 AND PLAT OF "SECOND ADDITION TO ATHENA CEMETERY", A REPLAT OF BLOCKS
 3 AND 4 AND CERTAIN DRIVEWAYS AND WALKWAYS IN THE FIRST ADDITION TO
 TO ATHENA CEMETERY. WE HEREBY DEDICATE THE BLOCKS, LOTS, GRAVESITES,
 DRIVEWAYS AND WALKWAYS DEPICTED ON THIS REPLAT EXCLUSIVELY FOR
 CEMETERY PURPOSES.

ATHENA CEMETERY MAINTENANCE DISTRICT, BY:

Glenda F. Rainwater *Gary E. Murck*
 GLENDA F. RAINWATER, PRESIDENT GARY E. MURCK, SECRETARY

ACKNOWLEDGED BEFORE ME THIS 22 DAY OF

February 2006.
Donna M. Subils
 NOTARY PUBLIC OF THE STATE OF OREGON

MY COMMISSION EXPIRES: 10-14-2008

COMMISSION NUMBER: 385199

RECORDING INFORMATION
 UMATILLA COUNTY OFFICE OF RECORDS:

STATE OF OREGON }
 COUNTY OF UMATILLA }
 I certify that this instrument was received and
 recorded
 ON March 1, 2006
 at 3:00 o'clock P.m., in the record of
 PLATS of said County.
 BOOK PAGE Slide
 15 4

OFFICE OF COUNTY RECORDS

By: ...JEAN HEMPHILL...Records Officer
 Fees \$ 60.00 No. 2006-4960798

I CERTIFY THAT THIS IS AN EXACT COPY OF THE
 PLAT OF SECOND ADDITION TO ATHENA CEMETERY.

William R. Wells
 WILLIAM R. WELLS, PLS.

RECEIVED BY: UMATILLA COUNTY SURVEYOR

3-06
 KE
 06-057-B