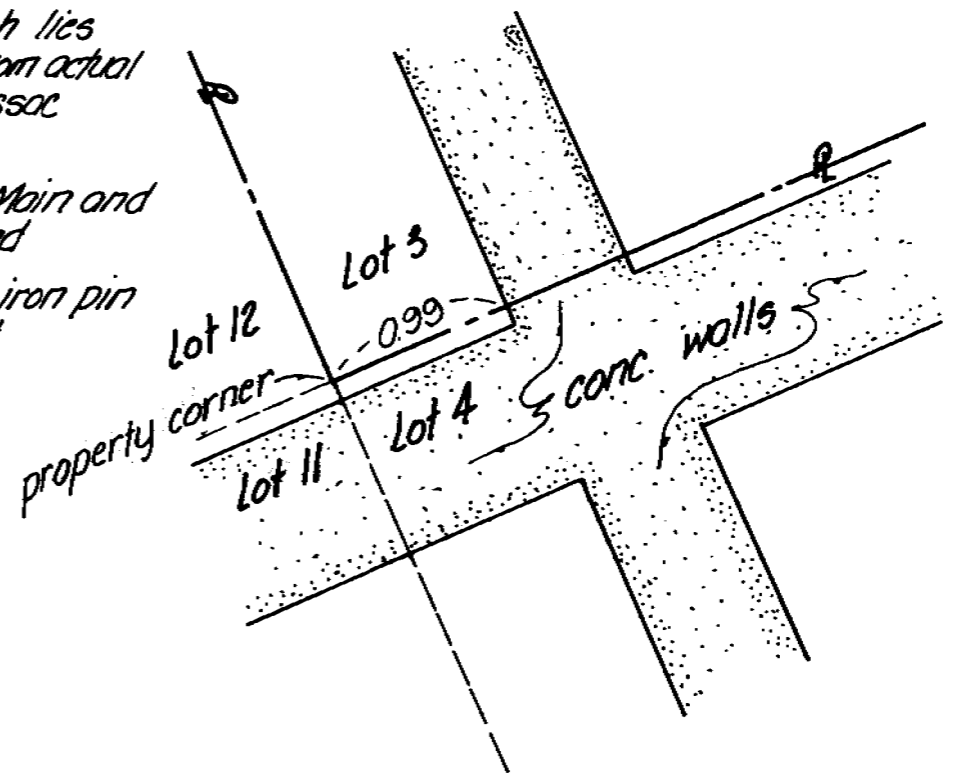


BLOCK 224

- denotes Brass Cap which lies  $5^{\circ}23'35''24''E$  0.13 feet from actual location of Main and Issac Streets, found.
- denotes monument at Main and Emigrant Streets found
- denotes  $\frac{9}{8}$  in. x 30 in. iron pin with aluminum cap set



DETAIL "A"  
1"=1'

**NARRATIVE**

The purpose of this survey was to establish the boundaries of lots 1, 2, and 3, Block 224, "Reservation Addition" to the city of Pendleton, Umatilla County, Oregon. We used monuments established and perpetuated by the City of Pendleton as shown. Angles and distances used were as per the original Plat of "Reservation Addition".

Bearing shown are City of Pendleton grid and are based upon a survey by the City of Pendleton for S.W. 17th Street.

RECEIVED BY

Umatilla County Surveyor  
 Date 2-15-83  
 Rec'd By B.L.C.  
 No. 83-16-A

REGISTERED PROFESSIONAL LAND SURVEYOR

*David H. Krumbain*  
 OREGON  
 JULY 17, 1970  
 DAVID H. KRUMBAIN  
 933

**KRUMBAIN ENGINEERING CO.**  
 ENGINEERS - SURVEYORS - PLANNERS  
 221 S. Main, Pendleton, Oregon

Survey for  
**FIRST AMERICAN BANKING CO.**  
 Lot 1, 2, & 3, Blk. 224, "Reservation Addition", Pendleton, Ore.

SCALE 1"=30'
DATE Oct. 22, 1982
DRN. BY M.L.D.
CKD. BY D.H.K.
DRAW. NO. 82-268