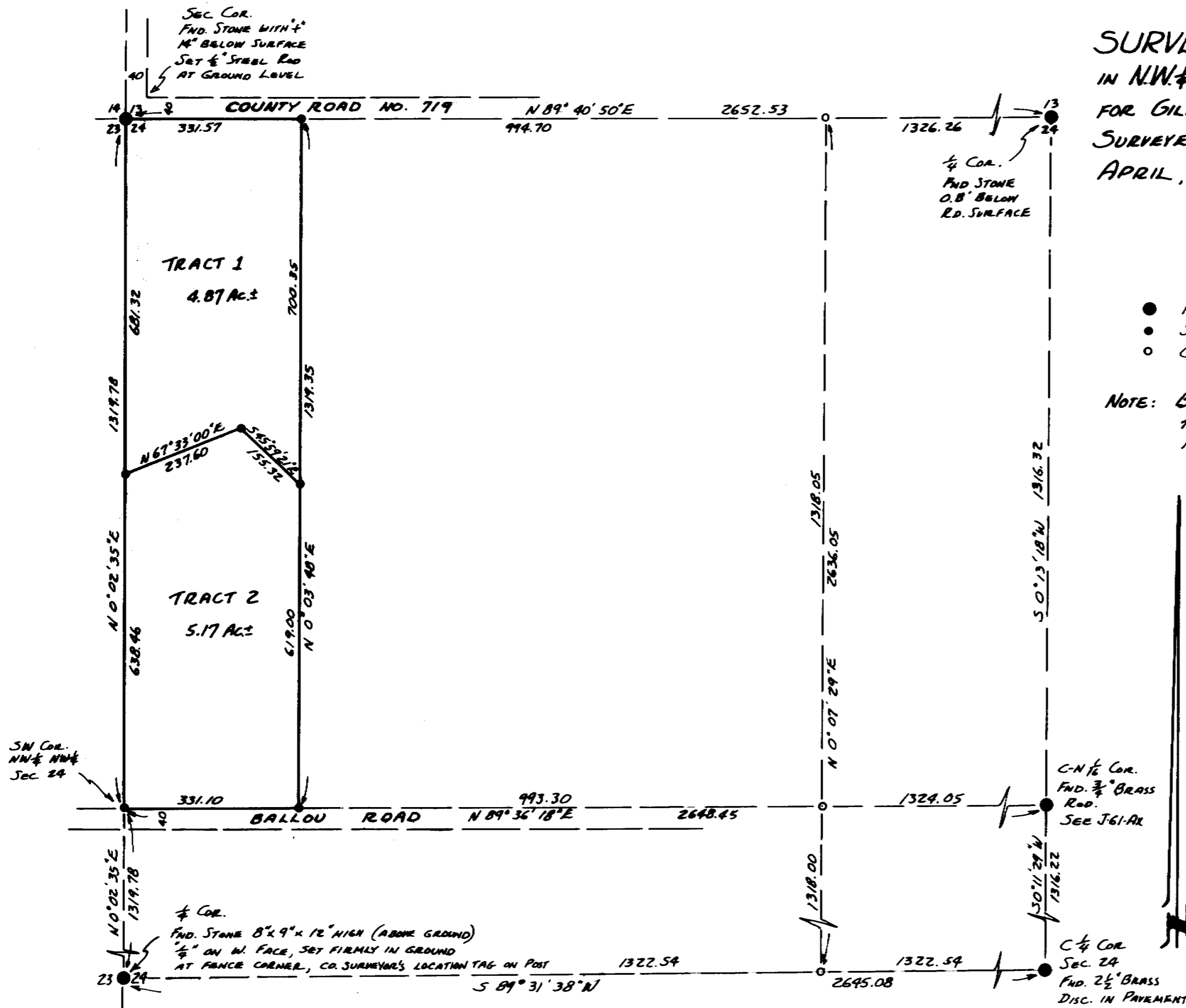


SURVEY FOR LAND PARTITIONING  
 IN NW¼ OF NW¼, SEC. 24, T.6N., R.35E., W.M.  
 FOR GILBERT L. & ALICE M. LARUE  
 SURVEYED BY VICTOR M. MCLIND, L.S. # 934  
 APRIL, 1984 SCALE: 1"=200'

**LEGEND**

- MONUMENT FOUND AS NOTED, USED FOR CONTROL
- SET ½" x 30" STEEL RE-BAR WITH 1" PLASTIC CAP MKD. "LS934"
- CALCULATED CORNER ONLY, NOT FOUND OR SET

NOTE: BEARINGS ARE BASED ON THE N. LINE OF THE NW¼ SEC. 24 AS PER C.S. FILE NO.'S H-49-AK AND H-44-A



REGISTERED  
 PROFESSIONAL  
 LAND SURVEYOR

*Victor M. Mc Lind*

OREGON  
 JULY 17, 1990  
 VICTOR M. MCLIND  
 934

RECEIVED BY  
 Umatilla County Surveyor  
 Date 4/84  
 Rec'd By bc  
 No. 84-40-A

84-40-A