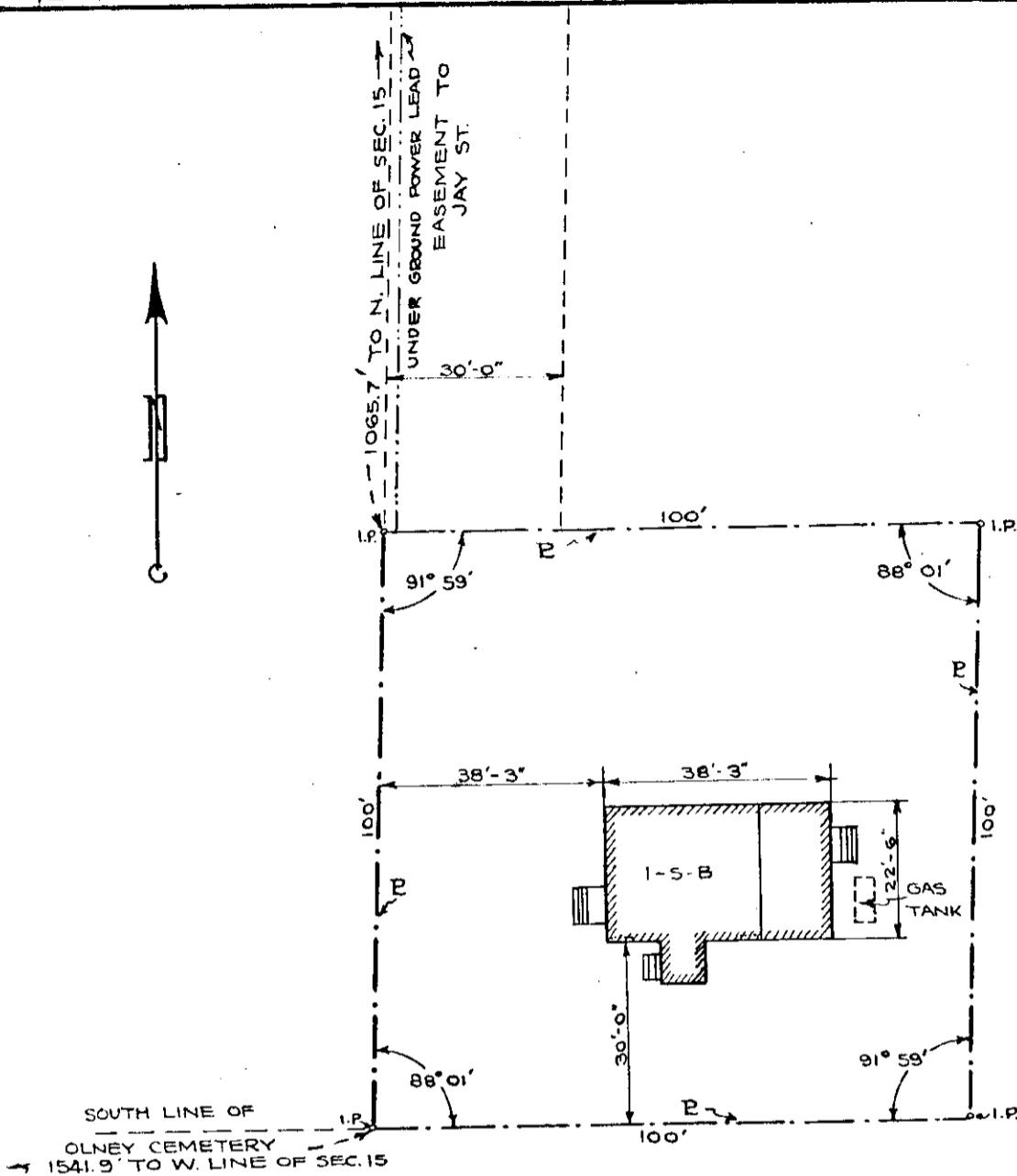


2N3215
 901
 16-1



CENTRAL ASSESS.
 1/1/42
 ORDER 29-1942.

BEGINNING AT THE CORNER COMMON TO SECTIONS 9, 10, 15, AND 16 TWP. 2 NORTH RANGE 32 E.W.M. THENCE RUNNING IN A SOUTHERLY DIRECTION AND ALONG THE WEST LINE OF SECTION 15, A DISTANCE OF 1303.3 FEET TO THE SOUTH BOUNDARY LINE OF OLNEY CEMETERY; THENCE IN AN EASTERLY DIRECTION AND ALONG THE SOUTH LINE OF OLNEY CEMETERY A DISTANCE OF 1541.9 FEET TO THE SOUTHEAST CORNER OF OLNEY CEMETERY WHICH IS THE BEGINNING OF THIS DESCRIPTION; THENCE IN A NORTHERLY DIRECTION AND ALONG THE EAST SIDE OF OLNEY CEMETERY MAKING A DEFLECTION ANGLE TO THE LEFT OF 88° 01' WITH THE LAST DESCRIBED LINE A DISTANCE OF 100 FEET; THENCE IN AN EASTERLY DIRECTION AND MAKING AN INTERIOR ANGLE OF 91° 59' WITH THE LAST DESCRIBED LINE A DISTANCE OF 100 FEET; THENCE IN A SOUTHERLY DIRECTION AND MAKING AN INTERIOR ANGLE OF 88° 01' WITH THE LAST DESCRIBED LINE A DISTANCE OF 100 FEET TO THE SOUTHERLY LINE OF OLNEY CEMETERY PROJECTED; THENCE IN A WESTERLY DIRECTION AND ALONG THE PROJECTED LINE OF OLNEY CEMETERY AND MAKING AN INTERIOR ANGLE OF 91° 59' WITH THE LAST DESCRIBED LINE A DISTANCE OF 100 FEET TO THE POINT OF BEGINNING, ALL LOCATED IN THE N.E. QUARTER OF THE N.W. QUARTER OF SECTION 15, TWP. 2 NORTH RANGE 32 E.W.M.

R.E. #2191

THE PACIFIC TEL. & TEL. CO		DRAWING	AO-174
OFFICE OF CHIEF ENGINEER PORTLAND		SCALE	1" = 30'-0"
REPEATER STATION	PENDLETON, OREGON	DRAWN BY	<i>K.C.</i>
SITE PLAN		APPROVED	<i>H.S. Peterson</i>
UMATILLA COUNTY pendleton R.E. #197			

(Formerly Pendleton R.E. #2)

RE-197

RECEIVED BY
 Umatilla County Surveyor
 Date 1/985
 Rec'd by *bc.*
 No. 85-6-A