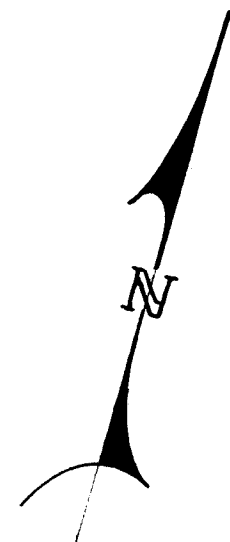
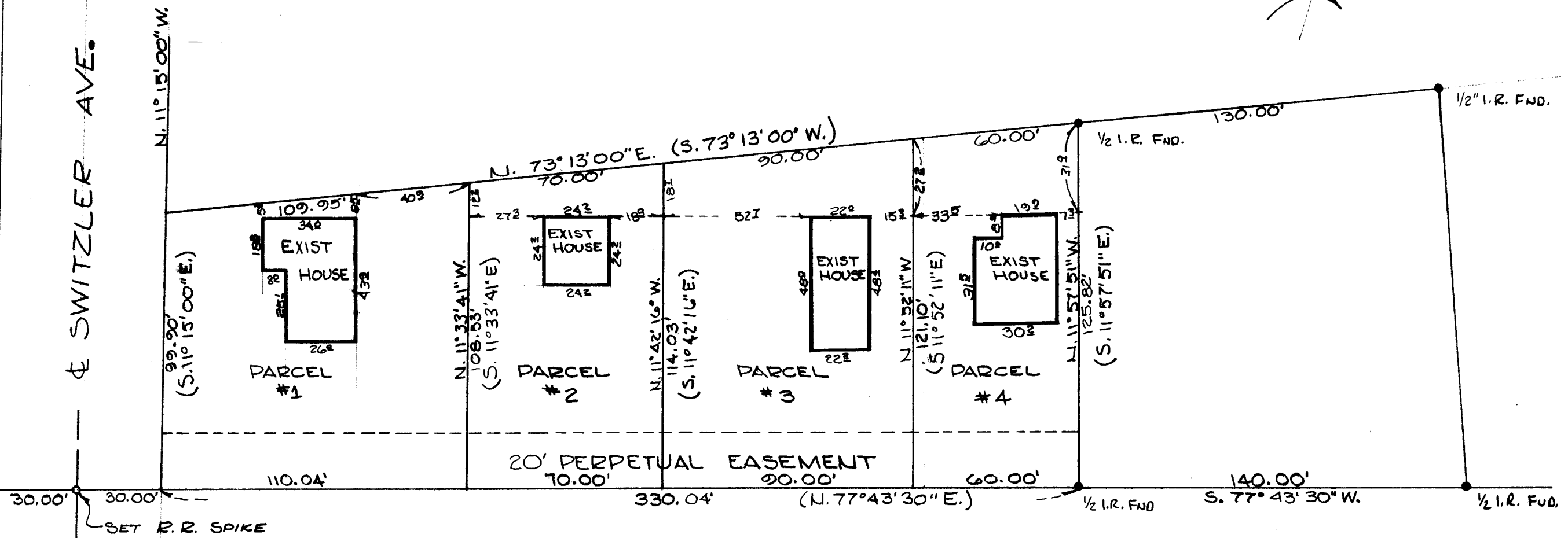


NOTE:  
 Bearings are true bearings  
 and are based on Umatilla  
 County Survey Records of work  
 done for McNary Addition, Umatilla,  
 Oregon by Frank D. Talbot-1947

LEGEND  
 ● Points Found  
 ○ Points Set



SWITZLER AVE.



100' R/W O.W.R.R. & N. Co.

PARCELING SURVEY FOR WALT CURRIE  
 CITY OF UMATILLA, OREGON, COUNTY OF UMATILLA  
 Location: Section 17, T.5N., R.28E. W.M.

WAYNE HARRIS CO. INC.				
ENGINEERS - SURVEYORS		PENDLETON, OR		
SCALE	DATE	DWN	CHK	DWG. NO
1" = 40'	5-18-77	I.D.	I.D.	78-10A

02-243-A