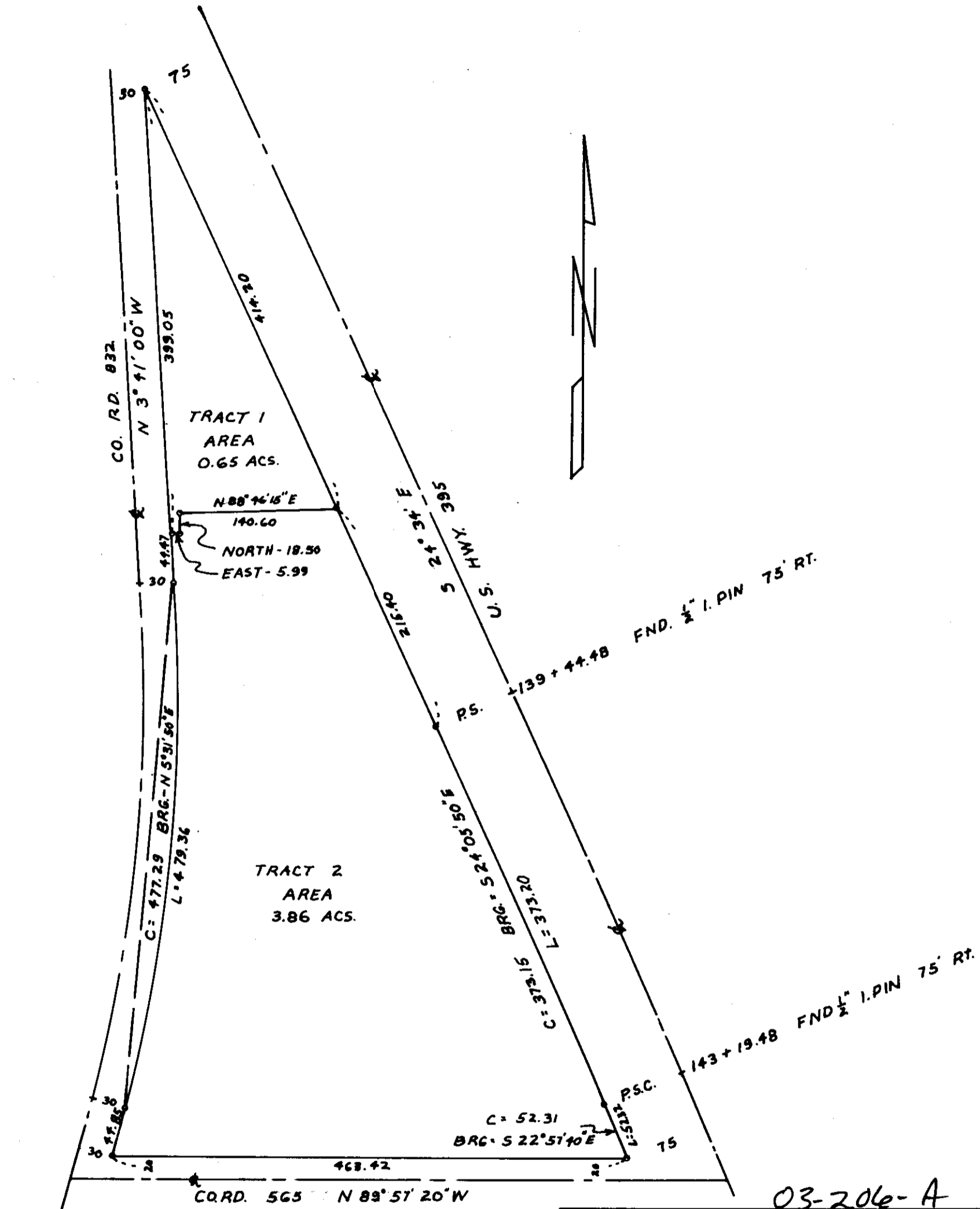


03-206-A



03-206-A

WAYNE HARRIS CO., INC.

SURVEY FOR
ELLIS WYLAND
PARCELS IN SW 1/4, SECTION 27
T.2N., R.32E., W.M.

- INDICATES 5/8" I. PIN SET
- INDICATES 1/2" I. PIN FND.

NOTE: BEARINGS SHOWN ARE TRUE.
THEY ARE BASED ON TIES TO
U.S. HWY. 395 MONUMENTS AS
SHOWN. $\theta = +1^{\circ} 12' 18''$

SCALE	DATE	DRN. BY	DRNG. NO.
1" = 100'	4-12-72	DHK	72-237A