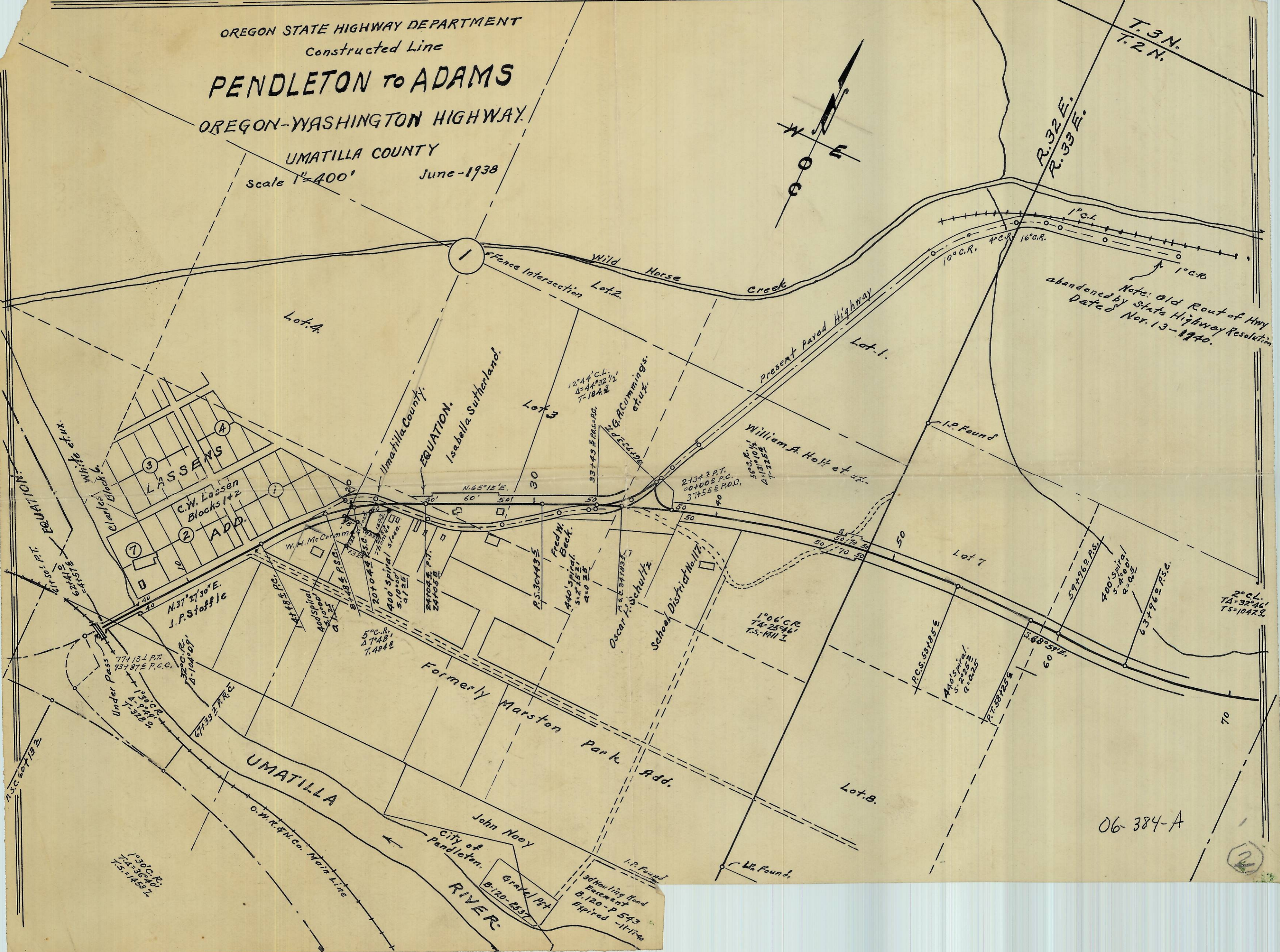


OREGON STATE HIGHWAY DEPARTMENT  
 Constructed Line  
**PENDLETON TO ADAMS**  
 OREGON-WASHINGTON HIGHWAY

UMATILLA COUNTY  
 Scale 1"=400' June-1938

T. 3 N.  
 T. 2 N.

R. 32 E.  
 R. 33 E.



Note: Old Rout of Hwy  
 abandoned by State Highway Resolution  
 Dated Nov. 13-1940.

06-384-A

(2)