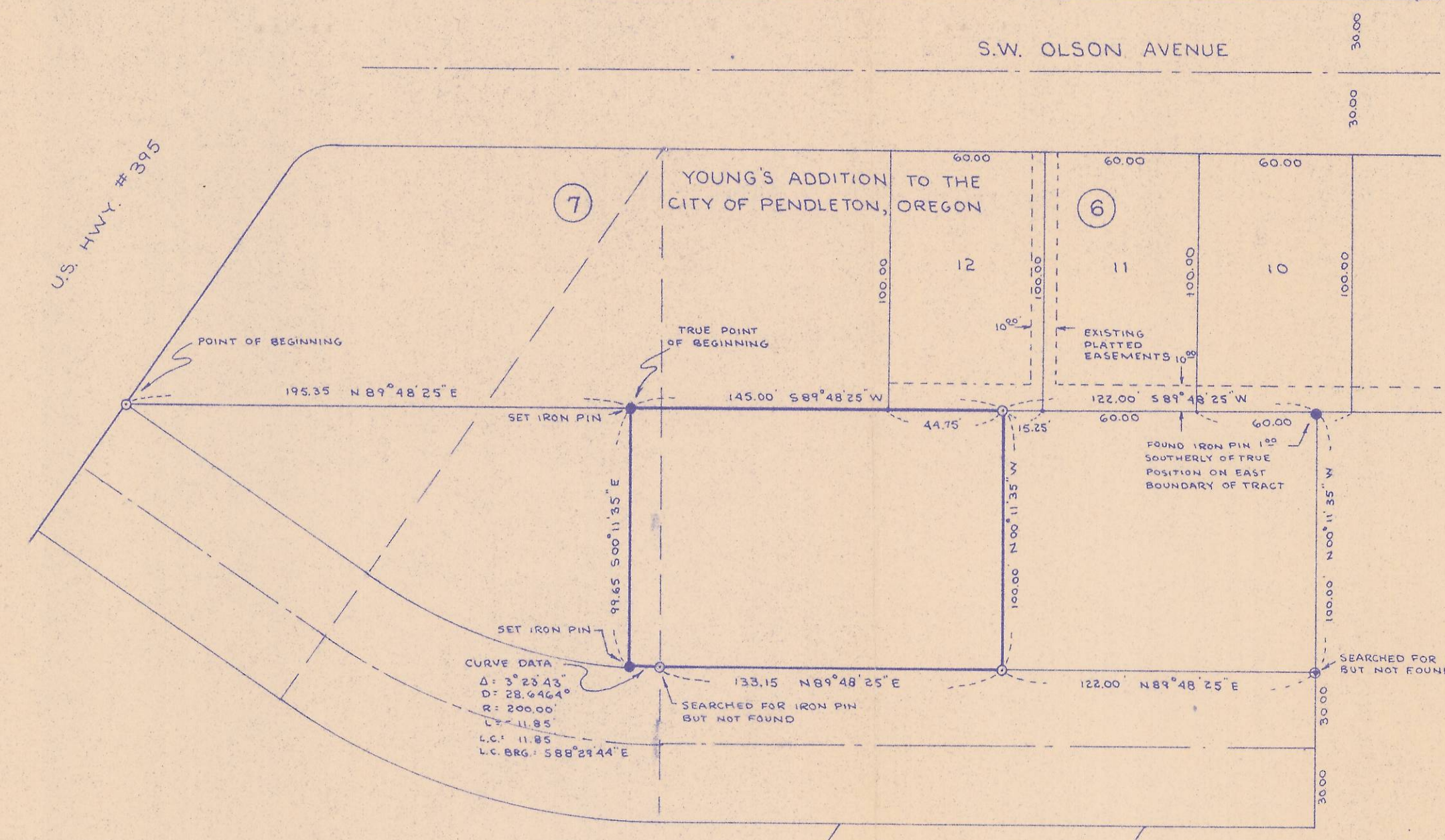


U.S. HWY. #395

S.W. OLSON AVENUE



REGISTERED PROFESSIONAL ENGINEER
 DONALD L. STAEBLER
 CONSULTING ENGINEER
 P.O. BOX 91
 PENDLETON, OREGON

203216AD

BOUNDARY LINE MAP FOR PENDLETON PARTNERS		
DRAWN BY: KWC	DATE: 1-8-68	SCALE: 1"=50'
REV: 5-13-68 KWC		
DONALD L. STAEBLER CONSULTING ENGINEER P.O. BOX 91		
PENDLETON		OREGON

06-442-A