

THE ABOVE PLAT OF THE TOWNSITE OF COLUMBIA IN SW 1/4 OF SECTION 32 IN T 5 N, R 29 E - W.M. OREGON, EXECUTED UNDER AUTHORITY OF ACTS OF APRIL 16 AND JUNE 27, 1906, 34 STAT. 116 AND 519, IS CORRECT AND ACCORDING TO THE FIELD NOTES ON FILE IN THIS OFFICE, WHICH HAVE BEEN EXAMINED AND APPROVED.

U.S. RECLAMATION SERVICE
WASHINGTON, D.C. 1915

DIRECTOR AND CHIEF ENGINEER

ROADS ON SOUTH AND WEST 66 FT WIDE
ROADS ON NORTH AND EAST AND DIAGONAL ROAD 40 FT WIDE.

APPROVED UNDER PROVISIONS OF ACTS OF APRIL 16 AND JUNE 27, 1906, 34 STAT. 116 AND 519.

WASHINGTON, D.C. 1915

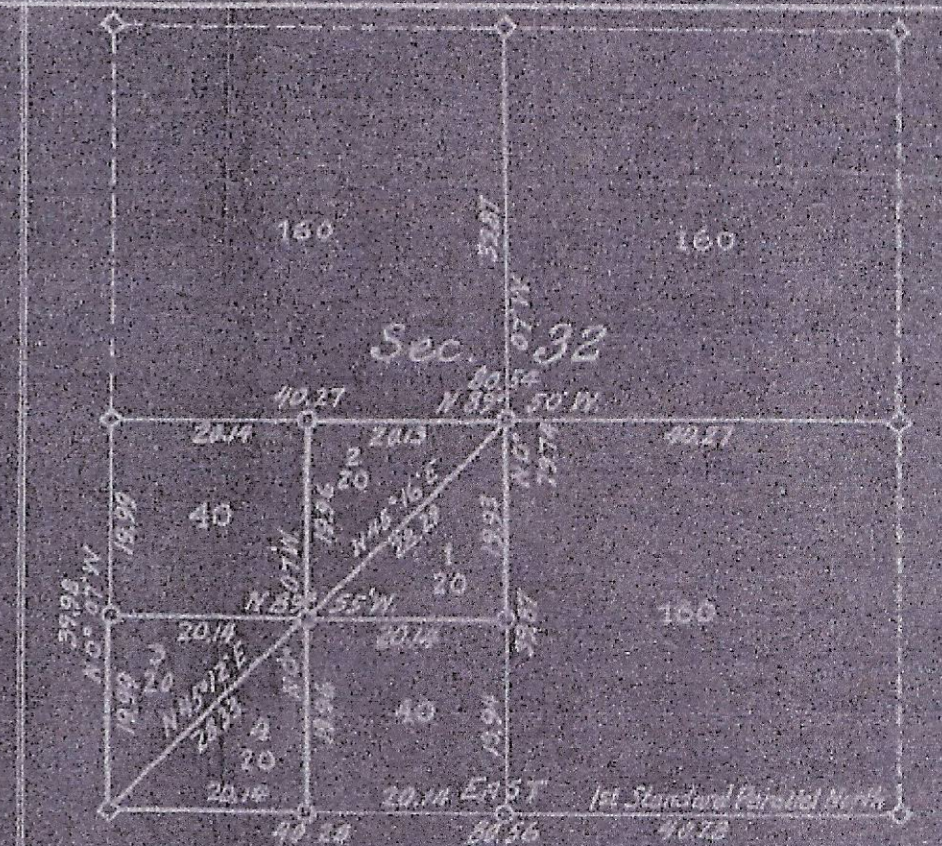
SECRETARY

THE ABOVE PLAT OF THE TOWNSITE OF COLUMBIA IN THE SOUTH WEST QUARTER OF SECTION 32, T 5 N, R 29 E - W.M. OREGON, CONFORMING STRICTLY WITH THE APPROVED FIELD NOTES OF THE SURVEY THEREOF EXECUTED BY E.T. FRISVOLD, ASSISTANT ENGINEER U.S.R.S. AND COMPLETED JAN. 13, 1915, ON FILE IN THIS OFFICE, IS HEREBY APPROVED.

GENERAL LAND OFFICE
WASHINGTON, D.C. 1915

COMMISSIONER

Note: All measurements given in chains except those in feet.
Lots 1, 2, 3, 4, 5, 13, 14, 15, 16, 17 are triangular (shown by Diagonal Road) and of 3 Acres each. All other lots are 10 Acres each. All lots are open to sale except lot 1.
Roads shown are established County Roads.



COPY OF ACCESSION No 15/26
OR SUPPLEMENTAL PLAT OF SEC. 32
IN T 5 N, R 29 E - W.M. OREGON,
CONTAINING COLUMBIA TOWNSITE.
SCALE 4" = 1 MILE

○ Direct corner of original survey
○ " " " set by E.T. Frisvold, Assistant Engineer U.S.R.S.

DEPARTMENT OF THE INTERIOR
United States Reclamation Service,
UMATILLA PROJECT - OREGON
PLAT OF COLUMBIA TOWNSITE
IN SW 1/4 SEC. 32 T 5 N, R 29 E - W.M. OREGON
SHOWING LOTS OPEN TO SALE
SCALE 1" = 1000'

November 22 - January 1915

11-035-A

Office
Copy
21-1-

Supplemental field notes of the survey of Columbia Townsite in SW $\frac{1}{4}$ Section 32, T.5 N. R. 29 E., of Willamette Meridian, Oregon.

This survey is a subdivision into 5 and 10 acre lots of the Government reserve of SW $\frac{1}{4}$ of said Section 32, as shown on accompanying plat No. 1351. Supplemental survey of said Sec. 32 was made in September, 1913, under Departmental instructions of October, 1906. This supplemental survey, part thereof being shown on location No. 15126, is the basis of the present townsite survey. As this survey has to do with only one tract, viz., the SW $\frac{1}{4}$ of said Section 32, this tract will be referred to hereafter in these notes as "the $\frac{1}{4}$ Section".

Chain Survey commenced January 12, 1915, and executed with Berger transit No. 9124, the opposite double verniers reading to 30" of arc.

Instrument is examined and found in good adjustment.

I begin at the standard corner, being the SW corner of Section 32, T.5 N. R.29 E. Willamette Meridian, as indicated in location No. 15126, being a hollow iron post 3" diameter, even with ground surface. The south line of said Section 32 being established and marked and being the First Standard Parallel North, as indicated in location No. 15126, was used for horizontal control. Sighting on the 1/16 corner on S line of the $\frac{1}{4}$ section, I turn 90° - 07' to the left and run N. 0° - 07' W. along W. line of the $\frac{1}{4}$ Section.

10 Set hub for temporary 1/64 corner.

19. Intersect 1/16 corner on W. line of the $\frac{1}{4}$ section, being

Chain an iron post 1" diameter 1" below ground surface of road fill.

Retracing on true line $70^{\circ}07' E$.

10.05 Set high 1/64 corner on N line $70^{\circ}07' E$ 30' and mark same with iron post 15/16" diam. 2" long set 2" in ground.

10.06 Set temporary 1/64 cor.

From the 1/16 cor. on N line of the 1/2 section, N to the property, I run $70^{\circ}07' E$ along N line of the 1/2 section.

10.07 Set temporary 1/64 cor.

10.99 Set at 1/16 cor. of the 1/2 section, before corner iron post 1" in diam. 3" long set 2" below surface of road fill.

Retracing on true line $70^{\circ}07' E$.

10.05 Set high 1/64 corner on N line $70^{\circ}07' E$ 30' and mark same with an iron post 15/16" diameter 2" long set 2" below to ground.

10.06 1/4 corner on N line of the 1/2 section to be before corner 10.

From the NW corner of the 1/2 section I run $70^{\circ}07' - 50' E$ along N line of the 1/2 section.

10.07 Set temporary 1/64 cor.

20.14 Intersect 1/16 cor. on N line of the 1/2 section marked by an iron post 1" in diameter 3" long set 2" above ground.

Retracing on true line $70^{\circ}07' E$.

10.07 Set high 1/64 corner on N line $70^{\circ}07' E$ 30' and mark same with an iron post 15/16" diam. 2" long set 2" in ground.

20.14 NW cor. of the 1/2 section marked to be before corner 10.

11-035-A

Chains

From the 1/16 cor. on N line of the 1/4 Section, marked as heretofore described, I run S 89° - 50' E along N line of the 1/4 Section.

10 Set temporary 1/64 cor.

20.13 Intersect NE cor. of the 1/4 Section marked by a hollow iron post 2" diameter projecting 1" above ground.

Retracing on true line N 89° - 50' W.

10.065 Establish 1/64 cor. on N line NE 1/4 SW 1/4 said Sec. 32 and mark same by an iron post 15/16" diam. 24" long set 22" in ground.

20.13 1/16 cor. on N line of the 1/4 Section marked as heretofore described.

From the NE cor. of the 1/4 Section marked as heretofore described, I run S 0° - 07' E along E line of the 1/4 Sec.

10. Set temporary 1/64 cor.

19.93 Intersect 1/16 cor. on E. line of the 1/4 Section marked by an iron post 1" diam. projecting 2" above ground.

Retracing on true line N 0° - 07' W.

9.965 Establish 1/64 cor. on E line NE 1/4 SW 1/4 said Sec. 32 and mark same with an iron post 15/16" diameter, 24" long set 22" in ground.

19.93 NE cor. of the 1/4 Section marked as heretofore described.

From the 1/16 cor. on E line of the 1/4 Section marked as heretofore described, I run S 0° - 07' E along E line SE 1/4 said Sec. 32.

10 Set temporary 1/64 corner.

19.94 Intersect SE cor of the 1/4 Section marked by an iron post 1" diameter 2" below ground surface of road fill.

Chains

Retracing on true line N 0° - 07' W.

9.97 Establish 1/64 cor. on E line SE 1/4 SW 1/4 said Sec. 32 and mark same with an iron post 15/16" diam. 24" long set 22" in ground.

19.94 1/16 cor. on E line of the 1/4 section marked as heretofore described.

From SE cor. of the 1/4 section I run West along S line of the 1/4 section.

10 Set temporary 1/64 corner.

20.14 Intersect 1/16 corner on S line of the 1/4 section marked by an iron post 1" diameter 24" long projecting 1" above ground.

Retracing on true line - East.

10.07 Establish 1/64 corner on S line SE 1/4 SW 1/4 said Sec. 32 and mark same by an iron post 15/16" diam. 24" long set 22" in ground.

20.14 SE cor of the 1/4 Section marked as heretofore described.

January 13, 1915

From the 1/16 cor. on S line of the 1/4 Section marked as heretofore described, I run West along S line of the 1/4 Section.

10 Set temporary 1/64 corner.

20.14 Intersect SW cor. of the 1/4 Section, point of beginning.

Retracing on true line East.

10.07 Establish 1/64 cor. on S line SW 1/4 SW 1/4 said Sec. 32 and mark same with iron post 15/16" diam. 24" long set 22" in ground.

Chains

20.14 1/16 cor. on S line of the 1/4 Section marked as heretofore described.

All 1/64 corners on the boundary lines of the 1/4 Section being now set, I proceed to set 1/64 corners on the N & S and E & W/center lines of the 1/4 Section.

From the 1/16 corner on S line of the 1/4 Section I run N 0° - 07° W along center line of the 1/4 Section.

10 Set temporary 1/64 corner.

19.96 Intersect 1/16 corner at center of the 1/4 Section marked by an iron post 1" diameter 2" below ground surface of road fill.

Retracing on true line S 0° - 07° E.

9.98 Set 1/64 corner on line between SW 1/4 and SE 1/4 of the 1/4 Section and mark same with an iron post 15/16" diam. 24" long set 22" in ground.

19.96 1/16 corner on S line of the 1/4 Section.

- - -

From the 1/16 corner at center of the 1/4 Section I run N 0° - 07° W.

10 Set temporary 1/64 corner.

19.96 Intersect 1/16 corner on N line of the 1/4 Section marked as heretofore described.

Retracing on true line S 0° - 07° E.

9.98 Set 1/64 cor. on line between NE 1/4 and NW 1/4 of the 1/4 Section and mark same with an iron post 15/16" diam. 24" long set 22" in ground.

19.96 1/16 corner at center of the 1/4 Section marked as heretofore described.

Chains

From the 1/16 corner on W line of the 1/4 Section I run S 89° - 55' E along center line of the 1/4 Section.

10 Set temporary 1/64 corner.

20.14 Intersect 1/16 corner at center of the 1/4 Section marked as heretofore described.

Retracing on true line N 89° - 55' W.

10.07 Set 1/64 corner on line between the NW 1/4 and SE 1/4 of the 1/4 Section and mark same with an iron post 15/16" diameter, 24" long set 22" in ground.

20.14 1/16 corner on W line of the 1/4 Section marked as heretofore described.

From the 1/16 corner at center of the 1/4 Section I run S 89° - 55' E.

10 Set temporary 1/64 corner.

20.14 Intersect 1/16 corner on E line of the 1/4 Section marked as heretofore described.

Retracing on true line N 89° - 55' W.

10.07 Set 1/64 cor. on line between the NE 1/4 and SE 1/4 of the 1/4 Section and mark same with an iron post 15/16" diameter 24" long set 22" in ground.

20.14 1/16 corner at center of the 1/4 Section.

All 1/64 corners being now set on boundary and center lines of the 1/4 Section and therefore on boundary lines of the four forty acre tracts of the 1/4 Section, I divide each forty acre tract into 10 acre tracts by running the N & S and the E & W center line of each forty by connecting 1/64 corners on opposite sides of the tract.

Chains

and at the intersection of said center lines in each "forty" I set the 1/64 corner marking center of each "forty" with an iron post 15/16" diameter 24" long set 22" in ground.

The 1/4 Section being divided into 10 acre tracts. I now proceed to divide the following tracts:

- SW 1/4 SW 1/4 SW 1/4 of said Section 32
- NE 1/4 SW 1/4 SW 1/4 " " " "
- SW 1/4 NE 1/4 SW 1/4 " " " "
- NE 1/4 NE 1/4 SW 1/4 " " " " (which are cut by the

established County Road known as the Diagonal Road) into 5 acre tracts by running the diagonal line extending from the SW corner to the NE corner of each 10 acre tract enumerated above, all being as shown on plat of Columbia Townsite No. 1351, submitted herewith, showing lots therein numbered from 1 to 20.

Completed January 13, 1915.

FINAL OATH

Heriaton, Ore. ~~January 26, 1915~~

I, E. T. Eriksen, assistant engineer, United States Reclamation Service, have surveyed the several tracts comprising the Columbia Townsite in the SW 1/4 of Section 32, Township 5 North, Range 29 E. of Willamette Meridian, Oregon, and which are described in the foregoing field notes as having been surveyed by me and under my direction. I hereby affirm that the surveys are accurately described in the foregoing field notes and accurately represented upon the accompanying plat.

E. T. Eriksen
Assistant Engineer, U. S. R. S.

Subscribed and sworn to before me this 26th
day of January A.D. 1915.

(S E A L)

W. J. Warner
U. S. Commissioner.

11-035-A

APPROVAL

DEPARTMENT OF THE INTERIOR
UNITED STATES RECLAMATION SERVICE

Washington, D.C. _____

The foregoing field notes of the survey of Columbia Townsite in the SW $\frac{1}{4}$ of Section 32, Township 5 North Range 29 East of the Willamette Meridian, Oregon, executed by E. T. Eriksen, assistant engineer, U.S. Reclamation Service, under authority of Acts of April 16 and June 27, 1906 (34 Stat., 116 and 519), having been examined and found to conform to said authority, are hereby approved.

Director.

DEPARTMENT OF THE INTERIOR
GENERAL LAND OFFICE

Washington, D.C. _____

The foregoing field notes of the survey of Columbia Townsite in the SW $\frac{1}{4}$ of Section 32, Township 5 N Range 29 East of Willamette Meridian, Oregon, executed by E.T. Eriksen, assistant engineer, U.S. Reclamation Service, having been critically examined, and the necessary corrections and explanations made, the said field notes, and the surveys they describe, are hereby approved.

Commissioner.