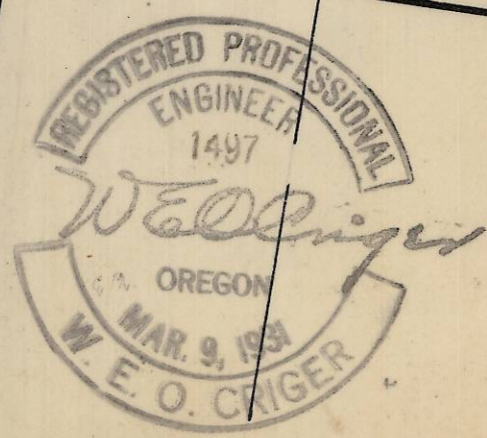
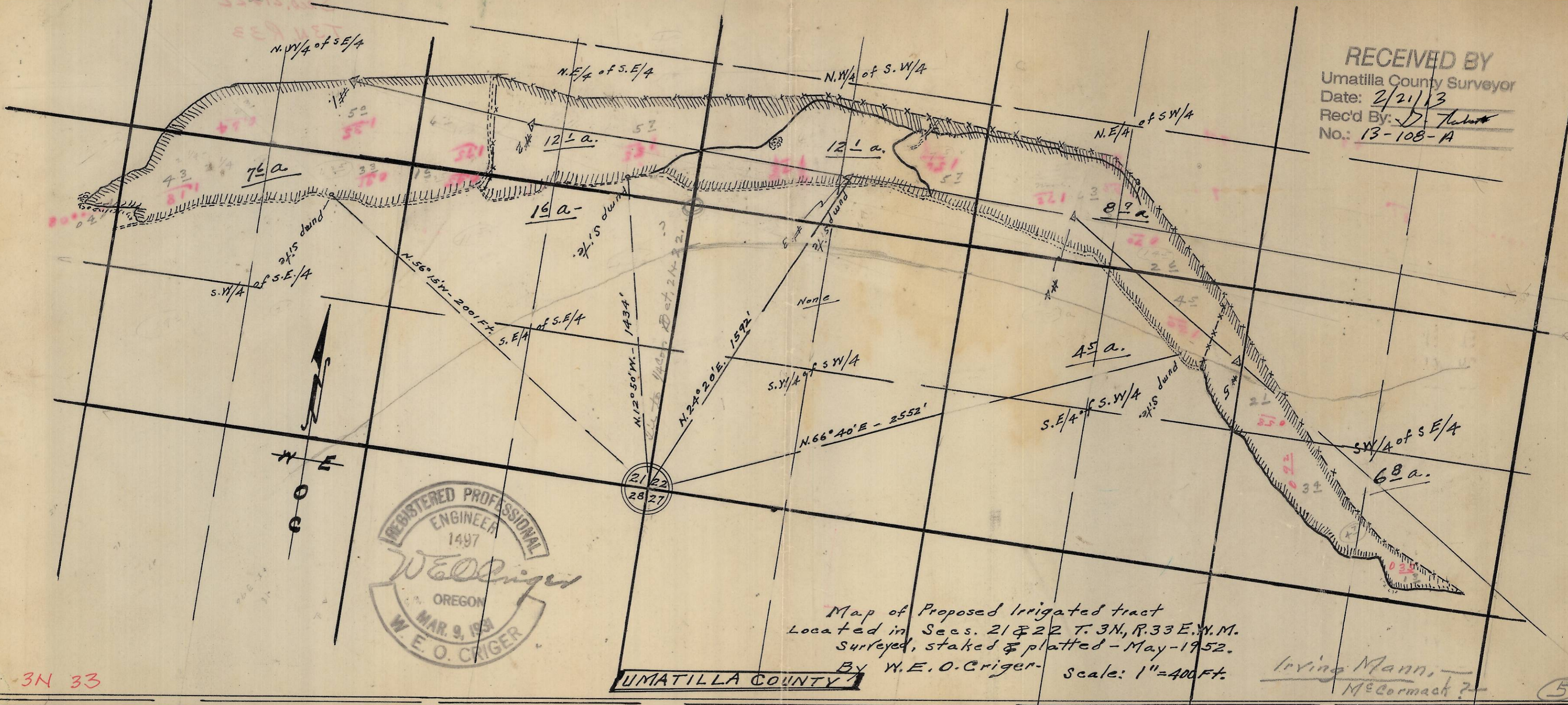


RECEIVED BY
 Umatilla County Surveyor
 Date: 2/21/13
 Rec'd By: *J. Tubert*
 No.: 13-108-A



Map of Proposed Irrigated tract
 Located in Secs. 21 & 22 T. 3N., R. 33E., W.M.
 Surveyed, staked & platted - May - 1952.
 By W. E. O. Criger. Scale: 1" = 400 ft.

Irving Mann,
 McCormack?

UMATILLA COUNTY

3N 33

5