

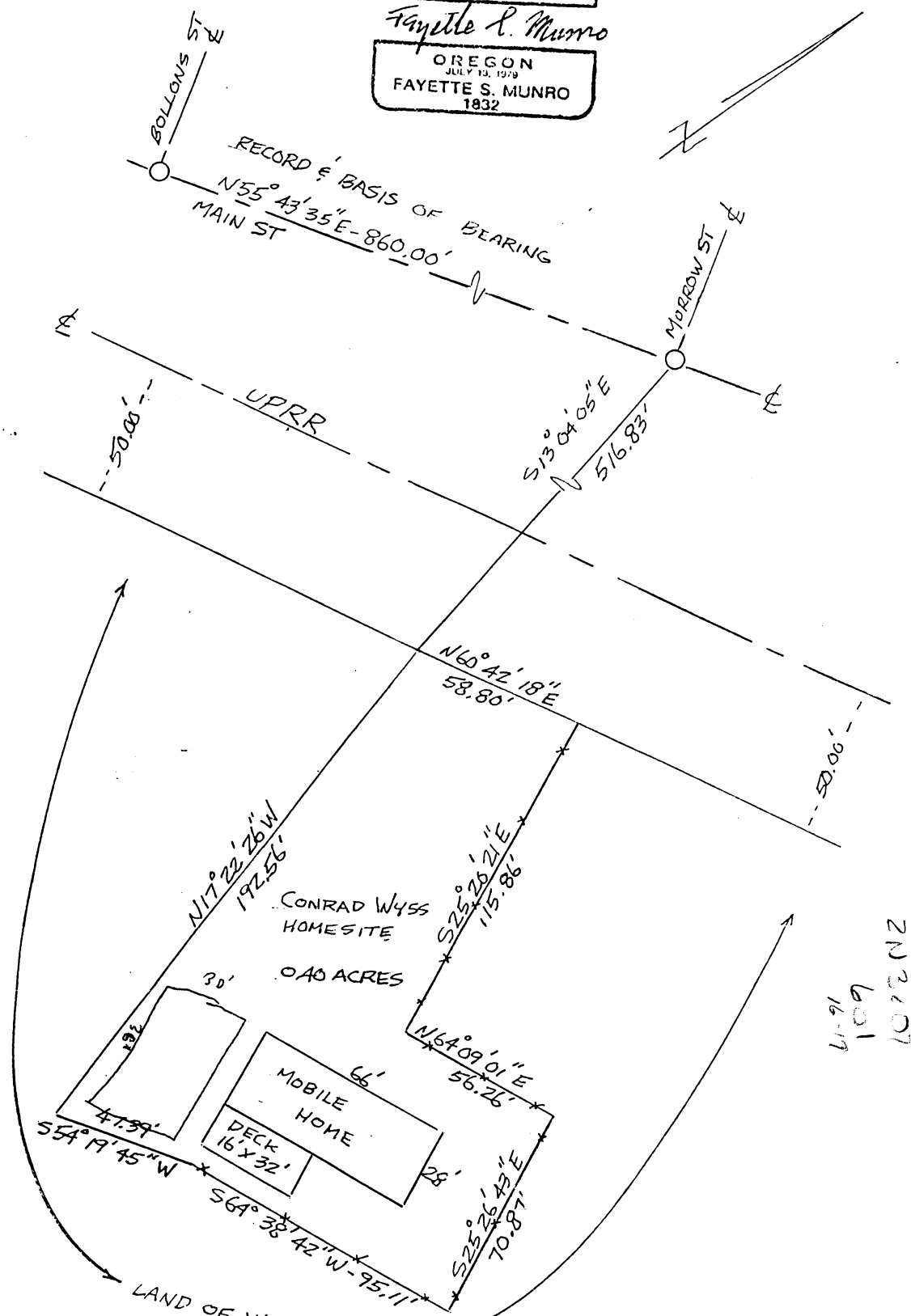
Survey of Conrad Wyss Homesite
 SW 1/4, Section 7, T.2N., R.32E., W.M.
 Umatilla Co., Oregon

December, 1992

○ BRASS CAP
 · CO. SURVEYOR
 * * * FENCE
 SCALE: 1" = 40'

REGISTERED
 PROFESSIONAL
 LAND SURVEYOR

Fayette S. Munro
 OREGON
 JULY 13, 1979
 FAYETTE S. MUNRO
 1932



2N2107
 601
 16-17